

1

Glides, inserts and plugs

Plastic inserts and plastic plugs for round, rectangular, square, oval, triangular, and inch tubes for insertion. Some also with felt, plastic, or metal slide face.



GFL

Page: 2



GL

Page: 3



GLF

Page: 11



GLK

Page: 12



GLP 1

Page: 13



GLP 2

Page: 14



GLR

Page: 15



LGG

Page: 17



SL

Page: 18



GFS

Page: 22



GR

Page: 23



GRF

Page: 24



GRL

Page: 25



GRP 1

Page: 26



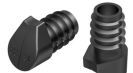
GRP 2

Page: 27



GRS

Page: 28



GS

Page: 29



LGS

Page: 30



GDF

Page: 31



GDK

Page: 32



GDM

Page: 33



GFN

Page: 34



GKN

Page: 35



GMN

Page: 36



GOF

Page: 37



GOL

Page: 38



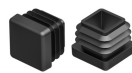
DZ

Page: 39



GLZ

Page: 40



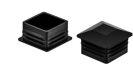
E

Page: 41



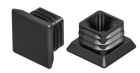
EF

Page: 45



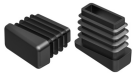
ES

Page: 46



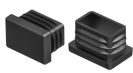
H

Page: 47



G

Page: 48



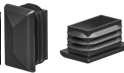
F

Page: 49



FF

Page: 60



FS

Page: 61



FSS

Page: 62



FO

Page: 63



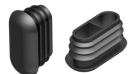
FOG 1

Page: 65



FOG 2

Page: 66



FOS

Page: 67



FOW

Page: 68

Glides with felt slide base

GFL

Application: for round tubes
 Additional Info: Attention! Please consider that not all glides have the same clamping ribs form
 Material: polyethylene
 Standard-Colour: black



Order No.	Tube outside Ø	Head Ø	Height	Shaft Ø	Shaft length	Rib Ø	Colour	PU*	MOQ**
		D	H	d	L	d1			
060000150001/FI	15 x 1,5-2	15,0	7,0	8,0	9,6	13,2	black	500	-
060000160001/FI	16 x 1,5-2	16,0	7,0	10,0	10,0	14,1	black	1000	-
060000180001/FI	18 x 1,5-2	18,0	7,0	13,3	12,0	16,8	black	1000	-
060000190001/FI	19 x 1,5-2	19,0	7,0	14,2	11,0	17,8	black	1000	-
060000200001/FI	20 x 1,5-2	20,0	7,0	15,1	12,0	19,0	black	1000	-
060000220001/FI	22 x 1,5-2	22,0	7,0	15,8	11,8	20,6	black	1000	-
060000250001/FI	25 x 1,5-2	25,0	8,0	18,8	11,8	24,0	black	500	-
060000280001/FI	28 x 1,5-2	28,0	8,0	21,5	14,0	27,0	black	100	-
060000300001/FI	30 x 1,5-2	30,0	8,0	23,4	14,0	29,0	black	100	-
060000320001/FI	32 x 1,5-2	32,0	8,0	26,3	14,5	30,5	black	500	-
060000350001/FI	35 x 1,5-2	35,0	8,0	29,5	14,0	34,2	black	500	-

Please note that the product illustrations are exemplary images that could deviate from the ordered/delivered products.

All of the dimensions are in mm should nothing to the contrary be stated.

*PU = Packaging Unit, SW = Spanner opening, n.w. = not detachable, o. K. = excl. The head, o. B. = excl. The collar, m. R. = with the radius, MOQ = Minimum Order Quantity.

** MOQ: Parts with MOQ, set-up costs may apply.

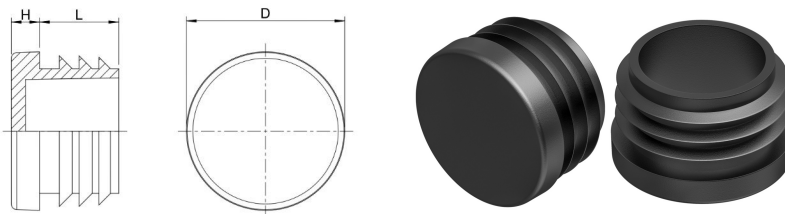
We exclusively sell to the trade and industry. Please note our minimum order quantities and the minimum order value per delivery. We would be pleased to send you an offer that is tailored to your needs should you require special colours, deviating dimensions, bioplastics, or larger order quantities.



Inserts for round tubes

GL

Application: for round tubes
 Additional Info: optionally available with welded felt.
 Attention! Please consider that not all
 glides have the same clamping ribs
 form
 Material: polyethylene
 Standard-Colour: black, white, grey



Order No.	Tube outside Ø	For other tube wall thickness	Head Ø	Height	Shaft length	Colour	PU*	MOQ**
			D	H	L			
060401250001000	125	1-4	124,4	6,0	33,5	black	50	-
060401250002000	125	1-4	124,4	6,0	33,5	grey	50	-
060401250003000	125	1-4	124,4	6,0	33,5	white	50	-
060501250001000	125	4-7,5	124,4	6,0	33,5	black	50	-
060501250002000	125	4-7,5	124,4	6,0	33,5	grey	50	-
060501250003000	125	4-7,5	124,4	6,0	33,5	white	50	-
060000100001000	10		10,0	4,0	6,0	black	5000	-
060000100001001	10		10,0	4,0	6,0	black	1000	5000
060000100002000	10		10,0	4,0	6,0	grey	5000	5000
060000100002001	10		10,0	4,0	6,0	grey	1000	5000
060000100003000	10		10,0	4,0	6,0	white	5000	5000
060000120001000	12	1-1,5	12,0	4,0	10,0	black	10000	-
060000120001001	12	1-1,5	12,0	4,0	10,0	black	1000	-
060000120002000	12	1-1,5	12,0	4,0	10,0	grey	10000	10000
060000120002001	12	1-1,5	12,0	4,0	10,0	grey	1000	10000
060000120003000	12	1-1,5	12,0	4,0	10,0	white	10000	10000
060000120003001	12	1-1,5	12,0	4,0	10,0	white	1000	10000
060000130001000	13		13,0	4,0	10,0	black	5000	-
060000130001001	13		13,0	4,0	10,0	black	1000	5000
060000130002000	13		13,0	4,0	10,0	grey	5000	5000
060000130002001	13		13,0	4,0	10,0	grey	1000	5000
060000130003000	13		13,0	4,0	10,0	white	5000	5000
060000130003001	13		13,0	4,0	10,0	white	1000	5000
060000140001000	14		14,0	4,0	9,3	black	5000	-
060000140001001	14		14,0	4,0	9,3	black	1000	5000
060000140002000	14		14,0	4,0	9,3	grey	5000	5000
060000140002001	14		14,0	4,0	9,3	grey	1000	5000
060000140003000	14		14,0	4,0	9,3	white	5000	5000
060000140003001	14		14,0	4,0	9,3	white	1000	5000
060000150001000	15		15,0	4,0	9,6	black	5000	-
060000150001001	15		15,0	4,0	9,6	black	1000	5000

Please note that the product illustrations are exemplary images that could deviate from the ordered/delivered products.

All of the dimensions are in mm should nothing to the contrary be stated.

*PU = Packaging Unit, SW = Spanner opening, n.w. = not detachable, o. K. = excl. The head, o. B. = excl. The collar, m. R. = with the radius, MOQ = Minimum Order Quantity.

** MOQ: Parts with MOQ, set-up costs may apply.



We exclusively sell to the trade and industry. Please note our minimum order quantities and the minimum order value per delivery.

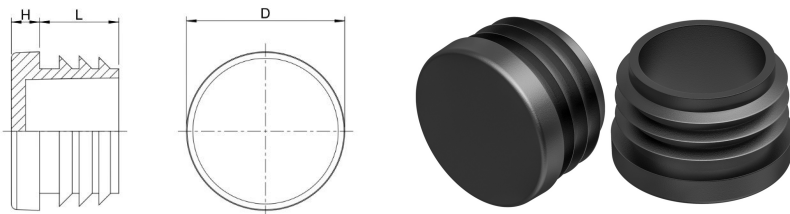
We would be pleased to send you an offer that is tailored to your needs should you require special colours, deviating dimensions, bioplastics, or larger order quantities.



Inserts for round tubes

Application: for round tubes
Material: polyethylene
Standard-Colour: black, white, grey

GL



Order No.	Tube outside \varnothing	For other tube wall thickness	Head \varnothing	Height	Shaft length	Colour	PU*	MOQ**
			D	H	L			
060000150002000	15		15,0	4,0	9,6	grey	5000	5000
060000150002001	15		15,0	4,0	9,6	grey	1000	5000
060000150003000	15		15,0	4,0	9,6	white	5000	5000
060000150003001	15		15,0	4,0	9,6	white	1000	5000
060000160001000	16		16,0	4,0	10,0	black	10000	-
060000160001001	16		16,0	4,0	10,0	black	1000	-
060000160002000	16		16,0	4,0	10,0	grey	10000	10000
060000160002001	16		16,0	4,0	10,0	grey	1000	10000
060000160003000	16		16,0	4,0	10,0	white	10000	10000
060000160003001	16		16,0	4,0	10,0	white	1000	10000
060000180001000	18		18,0	4,1	12,0	black	5000	-
060000180001001	18		18,0	4,1	12,0	black	1000	5000
060000180002000	18		18,0	4,1	12,0	grey	5000	15000
060000180002001	18		18,0	4,1	12,0	grey	1000	15000
060000180003000	18		18,0	4,1	12,0	white	5000	15000
060000180003001	18		18,0	4,1	12,0	white	1000	15000
060000190001000	19		19,0	4,1	11,0	black	5000	-
060000190001001	19		19,0	4,1	11,0	black	1000	5000
060000190002000	19		19,0	4,1	11,0	grey	5000	10000
060000190002001	19		19,0	4,1	11,0	grey	1000	10000
060000190003000	19		19,0	4,1	11,0	white	5000	10000
060000190003001	19		19,0	4,1	11,0	white	1000	10000
060000200001000	20		20,0	4,0	12,0	black	5000	-
060000200001001	20		20,0	4,0	12,0	black	1000	-
060000200002000	20		20,0	4,0	12,0	grey	5000	-
060000200002001	20		20,0	4,0	12,0	grey	1000	5000
060000200003000	20		20,0	4,0	12,0	white	5000	-
060000200003001	20		20,0	4,0	12,0	white	1000	5000
060000220001000	22		22,0	4,0	11,8	black	5000	-
060000220001001	22		22,0	4,0	11,8	black	1000	-
060000220002000	22		22,0	4,0	11,8	grey	5000	10000

Please note that the product illustrations are exemplary images that could deviate from the ordered/delivered products.

All of the dimensions are in mm should nothing to the contrary be stated.

*PU = Packaging Unit, SW = Spanner opening, n.w. = not detachable, o. K. = excl. The head, o. B. = excl. The collar, m. R. = with the radius, MOQ = Minimum Order Quantity.

** MOQ: Parts with MOQ, set-up costs may apply.



We exclusively sell to the trade and industry. Please note our minimum order quantities and the minimum order value per delivery.

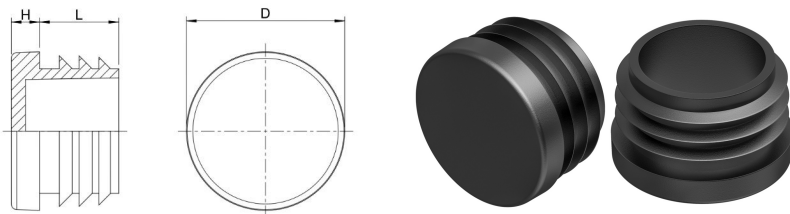
We would be pleased to send you an offer that is tailored to your needs should you require special colours, deviating dimensions, bioplastics, or larger order quantities.



Inserts for round tubes

Application: for round tubes
Material: polyethylene
Standard-Colour: black, white, grey

GL



Order No.	Tube outside \varnothing	For other tube wall thickness	Head \varnothing	Height	Shaft length	Colour	PU*	MOQ**
			D	H	L			
060000220002001	22		22,0	4,0	11,8	grey	1000	10000
060000220003000	22		22,0	4,0	11,8	white	5000	10000
060000220003001	22		22,0	4,0	11,8	white	1000	10000
060000250001000	25		25,0	5,0	11,8	black	5000	-
060000250001001	25		25,0	5,0	11,8	black	500	-
060000250002000	25		25,0	5,0	11,8	grey	5000	-
060000250002001	25		25,0	5,0	11,8	grey	500	5000
060000250003000	25		25,0	5,0	11,8	white	5000	-
060000250003001	25		25,0	5,0	11,8	white	500	5000
060000270001000	27		27,0	5,0	13,8	black	2500	-
060000270001001	27		27,0	5,0	13,8	black	500	2500
060000270002000	27		27,0	5,0	13,8	grey	2500	2500
060000270003000	27		27,0	5,0	13,8	white	2500	2500
060000280001000	28		28,0	5,0	14,0	black	5000	-
060000280001001	28		28,0	5,0	14,0	black	500	-
060000280002000	28		28,0	5,0	14,0	grey	5000	5000
060000280002001	28		28,0	5,0	14,0	grey	500	4000
060000280003000	28		28,0	5,0	14,0	white	5000	5000
060000280003001	28		28,0	5,0	14,0	white	500	4000
060000300001000	30		30,0	5,0	14,0	black	2000	-
060000300001001	30		30,0	5,0	14,0	black	500	-
060000300002000	30		30,0	5,0	14,0	grey	2000	6000
060000300002001	30		30,0	5,0	14,0	grey	500	6000
060000300003000	30		30,0	5,0	14,0	white	2000	6000
060000300003001	30		30,0	5,0	14,0	white	500	6000
060000320001000	32		32,0	5,0	14,5	black	2000	-
060000320001001	32		32,0	5,0	14,5	black	500	2000
060000320002000	32		32,0	5,0	14,5	grey	2000	-
060000320002001	32		32,0	5,0	14,5	grey	500	2000
060000320003000	32		32,0	5,0	14,5	white	2000	4000
060000320003001	32		32,0	5,0	14,5	white	500	4000

Please note that the product illustrations are exemplary images that could deviate from the ordered/delivered products.

All of the dimensions are in mm should nothing to the contrary be stated.

*PU = Packaging Unit, SW = Spanner opening, n.w. = not detachable, o. K. = excl. The head, o. B. = excl. The collar, m. R. = with the radius, MOQ = Minimum Order Quantity.

** MOQ: Parts with MOQ, set-up costs may apply.

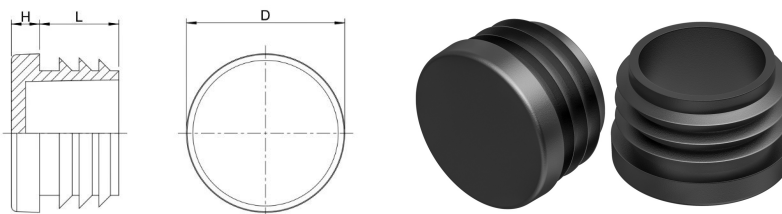
! We exclusively sell to the trade and industry. Please note our minimum order quantities and the minimum order value per delivery. We would be pleased to send you an offer that is tailored to your needs should you require special colours, deviating dimensions, bioplastics, or larger order quantities.



Inserts for round tubes

Application: for round tubes
Material: polyethylene
Standard-Colour: black, white, grey

GL



Order No.	Tube outside \varnothing	For other tube wall thickness	Head \varnothing	Height	Shaft length	Colour	PU*	MOQ**
			D	H	L			
060000340001000	34		34,0	5,5	14,5	black	2500	-
060000340001001	34		34,0	5,5	14,5	black	500	-
060000340002000	34		34,0	5,5	14,5	grey	2500	-
060000340003000	34		34,0	5,5	14,5	white	2500	2500
060000340003001	34		34,0	5,5	14,5	white	500	2500
060000350001000	35		35,0	5,0	14,3	black	2500	-
060000350001001	35		35,0	5,0	14,3	black	250	-
060000350002000	35		35,0	5,0	14,3	grey	2500	2500
060000350003000	35		35,0	5,0	14,3	white	2500	2500
060000350003001	35		35,0	5,0	14,3	white	250	2500
060000360001000	36		36,0	5,0	13,8	black	2000	-
060000360002000	36		36,0	5,0	13,8	grey	1000	3000
060000360003000	36		36,0	5,0	13,8	white	1000	3000
060000380001000	38		38,0	5,0	11,8	black	1000	-
060000380002000	38		38,0	5,0	11,8	grey	1000	2000
060000380003000	38		38,0	5,0	11,8	white	1000	-
060000400001000	40		40,0	5,0	11,7	black	1000	-
060000400002000	40		40,0	5,0	11,7	grey	1000	-
060000400003000	40		40,0	5,0	11,7	white	1000	2000
060000420001000	42		42,0	5,0	11,5	black	1000	-
060000420002000	42		42,0	5,0	11,5	grey	1000	2000
060000420003000	42		42,0	5,0	11,5	white	1000	2000
060000450001000	45		45,3	5,0	15,0	black	1000	-
060000450002000	45		45,3	5,0	15,0	grey	1000	-
060000450003000	45		45,3	5,0	15,0	white	1000	2000
060000500001000	50	1,5-2,5	50,0	5,2	16,0	black	1000	-
060000500001001	50	1,5-2,5	50,0	5,2	16,0	black	100	1000
060000500002000	50	1,5-2,5	50,0	5,2	16,0	grey	1000	2000
060000500003000	50	1,5-2,5	50,0	5,2	16,0	white	1000	2000
060000550001000	55		55,0	4,7	13,7	black	1000	-
060000550001001	55		55,0	4,7	13,7	black	100	1000

Please note that the product illustrations are exemplary images that could deviate from the ordered/delivered products.

All of the dimensions are in mm should nothing to the contrary be stated.

*PU = Packaging Unit, SW = Spanner opening, n.w. = not detachable, o. K. = excl. The head, o. B. = excl. The collar, m. R. = with the radius, MOQ = Minimum Order Quantity.

** MOQ: Parts with MOQ, set-up costs may apply.



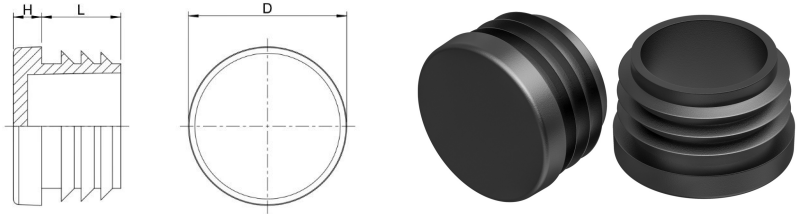
We exclusively sell to the trade and industry. Please note our minimum order quantities and the minimum order value per delivery.

We would be pleased to send you an offer that is tailored to your needs should you require special colours, deviating dimensions, bioplastics, or larger order quantities.

Inserts for round tubes

Application: for round tubes
Material: polyethylene
Standard-Colour: black, white, grey

GL



Order No.	Tube outside Ø	For other tube wall thickness	Head Ø	Height	Shaft length	Colour	PU*	MOQ**
			D	H	L			
060000550002000	55		55,0	4,7	13,7	grey	1000	2000
060000550002001	55		55,0	4,7	13,7	grey	100	2000
060000550003000	55		55,0	4,7	13,7	white	1000	2000
060000550003001	55		55,0	4,7	13,7	white	100	2000
060000650001000	65	1,5 - 3,5	65,0	5,0	21,0	black	250	-
060000650002000	65	1,5 - 3,5	65,0	5,0	21,0	trafficgrey	250	-
060000700001000	70		70,0	5,3	21,0	black	250	1000
060000800001000	80	1,5-2	80,0	6,5	17,5	black	300	-
060000800002000	80	1,5-2	80,0	6,5	17,5	grey	300	600
060000800003000	80	1,5-2	80,0	6,5	17,5	white	300	600
060100510001000	51	2-3,5	51,1	4,6	15,8	black	1000	2000
060100510002000	51	2-3,5	51,1	4,6	15,8	grey	1000	1000
060100510003000	51	2-3,5	51,1	4,6	15,8	white	1000	1000
060100700001000	70	1-3,5	70,0	5,0	21,0	black	225	-
060100700002000	70	1-3,5	70,0	5,0	21,0	grey	225	-
060100700003000	70	1-3,5	70,0	5,0	21,0	white	225	-
060200480001000	48	1,5-2,5	48,0	5,1	18,0	black	1000	-
060200480001001	48	1,5-2,5	48,0	5,1	18,0	black	100	1000
060200480002000	48	1,5-2,5	48,0	5,1	18,0	grey	1000	2000
060200480002001	48	1,5-2,5	48,0	5,1	18,0	grey	100	2000
060200480003000	48	1,5-2,5	48,0	5,1	18,0	white	1000	2000
060200480003001	48	1,5-2,5	48,0	5,1	18,0	white	100	2000
060200550001000	55	1-3	55,0	5,0	14,5	black	500	-
060200550002000	55	1-3	55,0	5,0	14,5	grey	500	-
060200550003000	55	1-3	55,0	5,0	14,5	white	500	-
060200600001000	60	1,5-2,5	60,0	5,3	21,4	black	500	-
060200600002000	60	1,5-2,5	60,0	5,3	21,4	grey	500	-
060200600003000	60	1,5-2,5	60,0	5,3	21,4	white	500	1500
060200700001000	70	2-4,5	70,0	5,3	21,0	black	250	-
060200700002000	70	2-4,5	70,0	5,3	21,0	grey	250	1000
060200700003000	70	2-4,5	70,0	5,3	21,0	white	250	1000

Please note that the product illustrations are exemplary images that could deviate from the ordered/delivered products.

All of the dimensions are in mm should nothing to the contrary be stated.

*PU = Packaging Unit, SW = Spanner opening, n.w. = not detachable, o. K. = excl. The head, o. B. = excl. The collar, m. R. = with the radius, MOQ = Minimum Order Quantity.

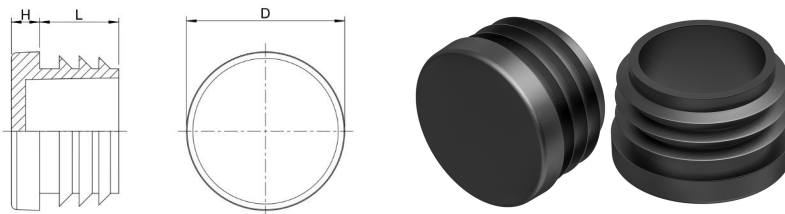
** MOQ: Parts with MOQ, set-up costs may apply.

We exclusively sell to the trade and industry. Please note our minimum order quantities and the minimum order value per delivery. We would be pleased to send you an offer that is tailored to your needs should you require special colours, deviating dimensions, bioplastics, or larger order quantities.

Inserts for round tubes

Application: for round tubes
 Material: polyethylene
 Standard-Colour: black, white, grey

GL



Order No.	Tube outside \varnothing	For other tube wall thickness	Head \varnothing	Height	Shaft length	Colour	PU*	MOQ**
			D	H	L			
060200760001000	76	1,5-2,5	76,0	5,0	21,5	black	250	-
060200760002000	76	1,5-2,5	76,0	5,0	21,5	grey	250	1000
060200760003000	76	1,5-2,5	76,0	5,0	21,5	white	250	1000
060201020001000	102	2-4	102,0	5,0	20,0	black	250	-
060201020002000	102	2-4	102,0	5,0	20,0	grey	250	500
060201020003000	102	2-4	102,0	5,0	20,0	white	250	500
060201200001000	120	2-4	119,5	5,6	28,0	black	60	-
060201200002000	120	2-4	119,5	5,6	28,0	trafficgrey	60	-
060201200003000	120	2-4	119,5	5,6	28,0	white	60	-
060201300001000	130	2-6	130,0	6,0	33,5	black	40	-
060201300002000	130	2-6	130,0	6,0	33,5	grey	40	120
060201300003000	130	2-6	130,0	6,0	33,5	white	40	-
060201400001000	140	2-6,5	140,0	6,0	33,5	black	40	-
060201400002000	140	2-6,5	140,0	6,0	33,5	grey	40	-
060201400003000	140	2-6,5	140,0	6,0	33,5	white	40	-
060201500001000	150	2-7	150,7	6,0	33,5	black	30	-
060201500002000	150	2-7	150,7	6,0	33,5	grey	30	-
060201500003000	150	2-7	150,7	6,0	33,5	white	30	-
060300250001000	25	3,0	25,0	5,0	11,8	black	5000	-
060300250001001	25	3,0	25,0	5,0	11,8	black	500	5000
060300250002000	25	3,0	25,0	5,0	11,8	grey	5000	10000
060300250002001	25	3,0	25,0	5,0	11,8	grey	500	5000
060300250003000	25	3,0	25,0	5,0	11,8	white	5000	10000
060300250003001	25	3,0	25,0	5,0	11,8	white	500	5000
060300300001000	30	3,0	30,0	5,0	14,0	black	2500	-
060300300001001	30	3,0	30,0	5,0	14,0	black	500	2500
060300300002000	30	3,0	30,0	5,0	14,0	grey	2500	5000
060300300002001	30	3,0	30,0	5,0	14,0	grey	500	5000
060300300003000	30	3,0	30,0	5,0	14,0	white	2500	5000
060300300003001	30	3,0	30,0	5,0	14,0	white	500	5000
060300320001000	32	3,0	32,0	5,0	14,0	black	2000	-

Please note that the product illustrations are exemplary images that could deviate from the ordered/delivered products.

All of the dimensions are in mm should nothing to the contrary be stated.

*PU = Packaging Unit, SW = Spanner opening, n.w. = not detachable, o. K. = excl. The head, o. B. = excl. The collar, m. R. = with the radius, MOQ = Minimum Order Quantity.

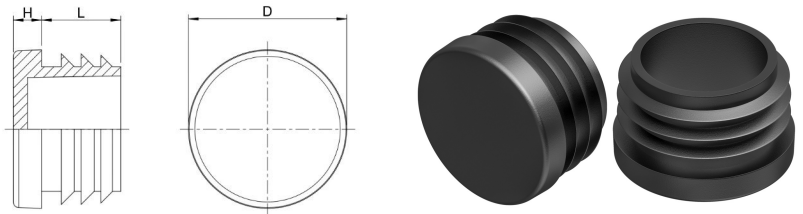
** MOQ: Parts with MOQ, set-up costs may apply.

! We exclusively sell to the trade and industry. Please note our minimum order quantities and the minimum order value per delivery. We would be pleased to send you an offer that is tailored to your needs should you require special colours, deviating dimensions, bioplastics, or larger order quantities.

Inserts for round tubes

Application: for round tubes
Material: polyethylene
Standard-Colour: black, white, grey

GL



Order No.	Tube outside Ø	For other tube wall thickness	Head Ø	Height	Shaft length	Colour	PU*	MOQ**
			D	H	L			
060300320001001	32	3,0	32,0	5,0	14,0	black	500	2000
060300320002000	32	3,0	32,0	5,0	14,0	grey	2000	2000
060300320002001	32	3,0	32,0	5,0	14,0	grey	500	2000
060300320003000	32	3,0	32,0	5,0	14,0	white	2000	2000
060300320003001	32	3,0	32,0	5,0	14,0	white	500	2000
060300400001000	40	3,0	40,0	5,0	11,7	black	2000	-
060300400001001	40	3,0	40,0	5,0	11,7	black	500	2000
060300400002000	40	3,0	40,0	5,0	11,7	grey	2000	2000
060300400002001	40	3,0	40,0	5,0	11,7	grey	500	2000
060300400003000	40	3,0	40,0	5,0	11,7	white	2000	2000
060300400003001	40	3,0	40,0	5,0	11,7	white	500	2000
060300420001000	42	3-4	42,0	4,7	12,0	black	1000	-
060300420002000	42	3-4	42,0	4,7	12,0	grey	1000	3000
060300460001000	46	1,5-3,5	45,9	4,7	11,7	black	1000	-
060300460002000	46	1,5-3,5	45,9	4,7	11,7	grey	1000	-
060300460003000	46	1,5-3,5	45,9	4,7	11,7	white	1000	-
060300480001000	48	3-4	48,0	5,1	17,8	black	1000	-
060300480001001	48	3-4	48,0	5,1	17,8	black	100	1000
060300480002000	48	3-4	48,0	5,1	17,8	grey	1000	2000
060300480003000	48	3-4	48,0	5,1	17,8	white	1000	2000
060300500001000	50	2,5-3,5	50,0	5,2	17,5	black	1000	-
060300500002000	50	2,5-3,5	50,0	5,2	17,5	grey	1000	2000
060300500003000	50	2,5-3,5	50,0	5,2	17,5	white	1000	2000
060300600001000	60	3-4	60,0	5,3	21,3	black	500	-
060300600002000	60	3-4	60,0	5,3	21,3	grey	500	1000
060300600003000	60	3-4	60,0	5,3	21,3	white	500	1000
060300750001000	75	3-5	75,0	6,0	21,0	black	200	-
060300750002000	75	3-5	75,0	6,0	21,0	grey	200	-
060300750003000	75	3-5	75,0	6,0	21,0	white	200	-
060300760002000	76	3-4	76,0	5,0	22,0	grey	250	750
060300760003000	76	3-4	76,0	5,0	22,0	white	250	750

Please note that the product illustrations are exemplary images that could deviate from the ordered/delivered products.

All of the dimensions are in mm should nothing to the contrary be stated.

*PU = Packaging Unit, SW = Spanner opening, n.w. = not detachable, o. K. = excl. The head, o. B. = excl. The collar, m. R. = with the radius, MOQ = Minimum Order Quantity.

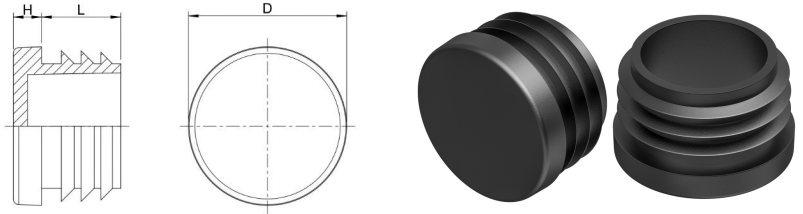
** MOQ: Parts with MOQ, set-up costs may apply.

We exclusively sell to the trade and industry. Please note our minimum order quantities and the minimum order value per delivery. We would be pleased to send you an offer that is tailored to your needs should you require special colours, deviating dimensions, bioplastics, or larger order quantities.

Inserts for round tubes

GL

Application: for round tubes
Material: polyethylene
Standard-Colour: black, white, grey



Order No.	Tube outside \varnothing	For other tube wall thickness	Head \varnothing	Height	Shaft length	Colour	PU*	MOQ**
			D	H	L			
060300800001000	80	3,0 - 5,5	80,0	6,0	21,0	black	175	-
060300800002000	80	3,0 - 5,5	80,0	6,0	21,0	trafficgrey	175	-
060300800003000	80	3,0 - 5,5	80,0	6,0	21,0	white	175	-
060300900001000	90	2,5-4	90,0	5,0	20,0	black	250	-
060300900002000	90	2,5-4	90,0	5,0	20,0	grey	250	500
060300900003000	90	2,5-4	90,0	5,0	20,0	white	250	500
060500850001000	85	3,5-6	85,0	6,0	21,0	black	150	-
060500850002000	85	3,5-6	85,0	6,0	21,0	grey	150	-
060500850003000	85	3,5-6	85,0	6,0	21,0	white	150	-

Please note that the product illustrations are exemplary images that could deviate from the ordered/delivered products.

All of the dimensions are in mm should nothing to the contrary be stated.

*PU = Packaging Unit, SW = Spanner opening, n.w. = not detachable, o. K. = excl. The head, o. B. = excl. The collar, m. R. = with the radius, MOQ = Minimum Order Quantity.

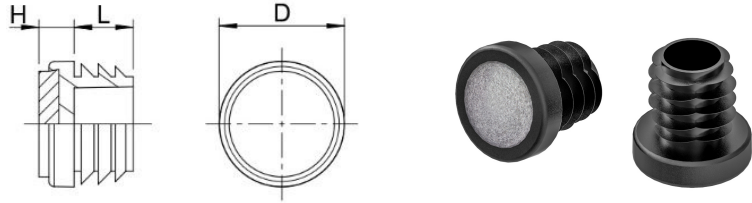
** MOQ: Parts with MOQ, set-up costs may apply.

We exclusively sell to the trade and industry. Please note our minimum order quantities and the minimum order value per delivery. We would be pleased to send you an offer that is tailored to your needs should you require special colours, deviating dimensions, bioplastics, or larger order quantities.

Glides with felt slide base

GLF

Application: for round tubes
 Additional Info: Attention! Please consider that not all glides have the same clamping ribs form
 Material: polypropylene
 Standard-Colour: black



Order No.	Head Ø	Wall thickness	Height	Shaft Ø	Shaft length	Ribs Ø	Felt	Colour	PU*	MOQ**
	D	E	H	d	L	d1	d2xh			
601100190001000	19,0	1,5-2	6,0	12,3	16,0	16,5	14 x 2	black	500	500
601100200001000	20,0	1,5-2,5	6,0	13,5	16,0	17,5	Ø15x2	black	3500	3500
601100220001000	25,0	1,5-2,5	6,0	15,5	16,0	19,4	Ø20x2	black	2500	2500
601100250001000	25,0	1,5-2,5	6,0	18,5	16,0	22,4	Ø20x2	black	2250	2250
601100280001000	28,0	1,5-2,5	5,0	21,5	14,0	27,0	Ø20x3	black	1500	1500
601100300001000	32,0	1,5-2,5	6,0	23,5	16,0	27,7	Ø27x2	black	1500	1500
601100320001000	32,0	1,5-2,5	6,0	25,5	16,0	29,4	Ø27x2	black	1250	1250

Please note that the product illustrations are exemplary images that could deviate from the ordered/delivered products.

All of the dimensions are in mm should nothing to the contrary be stated.

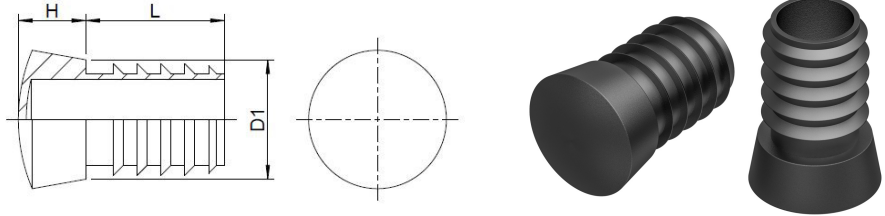
*PU = Packaging Unit, SW = Spanner opening, n.w. = not detachable, o. K. = excl. The head, o. B. = excl. The collar, m. R. = with the radius, MOQ = Minimum Order Quantity.

** MOQ: Parts with MOQ, set-up costs may apply.

We exclusively sell to the trade and industry. Please note our minimum order quantities and the minimum order value per delivery. We would be pleased to send you an offer that is tailored to your needs should you require special colours, deviating dimensions, bioplastics, or larger order quantities.

Glides with conical base

Application: for round tubes
 Additional Info: Attention! Please consider that not all glides have the same clamping ribs form
 Material: polyethylene
 Standard-Colour: black



Order No.	Tube outside \varnothing	Rib \varnothing	Shaft \varnothing	Shaft length	Head height	Colour	PU*	MOQ**
		d1	d	L	H			
602100180001000	18 x 1-2	17,0	13,0	25,0	12,0	black	500	2500
602100200001000	20 x 1-2	19,0	15,0	25,0	13,0	black	500	-
602100220001000	22 x 1,5-2,5	20,8	15,0	30,0	14,0	black	1000	-
602100250001000	25 x 1,5-2,5	23,0	18,0	30,0	15,0	black	500	1000
602100280001000	28 x 1,5-2,5	26,0	21,0	30,0	16,0	black	500	1500
602100300001000	30 x 1,5-2,5	28,0	23,0	35,0	17,0	black	500	-

Please note that the product illustrations are exemplary images that could deviate from the ordered/delivered products.

All of the dimensions are in mm should nothing to the contrary be stated.

*PU = Packaging Unit, SW = Spanner opening, n.w. = not detachable, o. K. = excl. The head, o. B. = excl. The collar, m. R. = with the radius, MOQ = Minimum Order Quantity.

** MOQ: Parts with MOQ, set-up costs may apply.

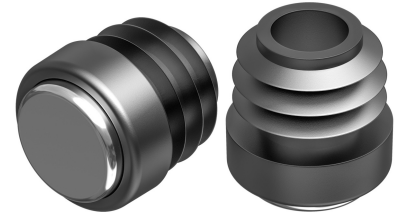
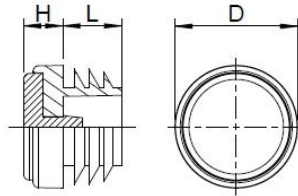
We exclusively sell to the trade and industry. Please note our minimum order quantities and the minimum order value per delivery. We would be pleased to send you an offer that is tailored to your needs should you require special colours, deviating dimensions, bioplastics, or larger order quantities.



Glides with PA6 slide face

Application: for round tubes
Material: polyethylene
Standard-Colour: black

GLP 1



Order No.	Tube outside \varnothing	Head \varnothing	Height	Shaft \varnothing	Shaft length	Rib \varnothing	Colour	PU*	MOQ**
		D	H	d	L	d1			
060216130001/PA	16 x 1,5-2	16	8	10,1	9,7	14,6	black	1000	-
060218150001/PA	18 x 1,5-2	18	8	13,3	12,0	16,8	black	1000	-
060219150001/PA	19 x 1,5-2	19	8	14,2	11,0	17,8	black	5000	5000
060220170001/PA	20 x 1,5-2	20	8	15,1	12,0	19,0	black	5000	-
060222190001/PA	22 x 1,5-2	22	8	15,8	11,8	20,6	black	1000	-
060225220001/PA	25 x 1,5-2	25	8	18,8	11,8	24,0	black	500	-

Please note that the product illustrations are exemplary images that could deviate from the ordered/delivered products.

All of the dimensions are in mm should nothing to the contrary be stated.

*PU = Packaging Unit, SW = Spanner opening, n.w. = not detachable, o. K. = excl. The head, o. B. = excl. The collar, m. R. = with the radius, MOQ = Minimum Order Quantity.

** MOQ: Parts with MOQ, set-up costs may apply.



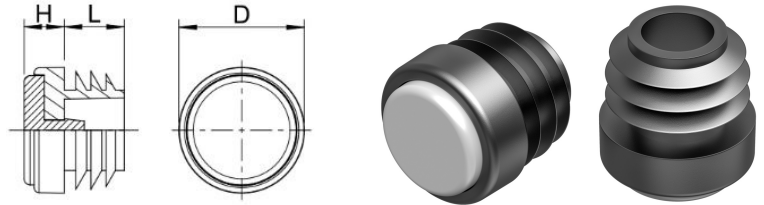
We exclusively sell to the trade and industry. Please note our minimum order quantities and the minimum order value per delivery.

We would be pleased to send you an offer that is tailored to your needs should you require special colours, deviating dimensions, bioplastics, or larger order quantities.

Glides with POM/PTFE slide face

GLP 2

Application: for round tubes
Material: polyethylene
Standard-Colour: black



Order No.	Tube outside \varnothing	Head \varnothing	Height	Shaft \varnothing	Shaft length	Rib \varnothing	Colour	PU*	MOQ**
		D	H	d	L	d1			
060216130001/PT	16 x 1,5-2	16	8	10,1	9,7	14,6	black	1000	-
060218150001/PT	18 x 1,5-2	18	8	13,3	12,0	16,8	black	1000	-
060219150001/PT	19 x 1,5-2	19	8	14,2	11,0	17,8	black	5000	5000
060220170001/PT	20 x 1,5-2	20	8	15,1	12,0	19,0	black	5000	-
060222190001/PT	22 x 1,5-2	22	8	15,8	11,8	20,6	black	1000	-
060225220001/PT	25 x 1,5-2	25	8	18,8	11,8	24,0	black	500	-

Please note that the product illustrations are exemplary images that could deviate from the ordered/delivered products.

All of the dimensions are in mm should nothing to the contrary be stated.

*PU = Packaging Unit, SW = Spanner opening, n.w. = not detachable, o. K. = excl. The head, o. B. = excl. The collar, m. R. = with the radius, MOQ = Minimum Order Quantity.

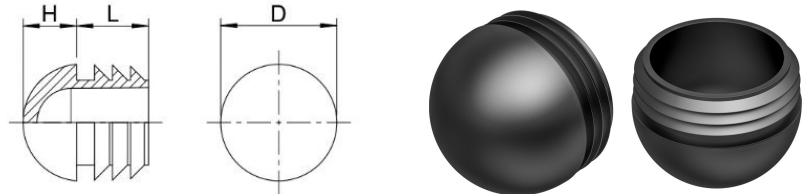
** MOQ: Parts with MOQ, set-up costs may apply.

We exclusively sell to the trade and industry. Please note our minimum order quantities and the minimum order value per delivery. We would be pleased to send you an offer that is tailored to your needs should you require special colours, deviating dimensions, bioplastics, or larger order quantities.

Inserts with ball-head

GLR

Application: for round tubes
 Additional Info: Attention! Please consider that not all glides have the same clamping ribs form
 Material: polyethylene
 Standard-Colour: black



Order No.	Article	Head Ø	Height	Shaft length	Colour	PU*	MOQ**
		D	H	L			
058500160002000	GLR 16	16,0	7,3	12,0	grey	10000	10000
058500160001000	GLR 16	16,0	7,3	12,0	black	10000	-
058500160001001	GLR 16	16,0	7,3	12,0	black	1000	-
058500160003000	GLR 16	16,0	7,3	12,0	white	10000	10000
058500180001000	GLR 18	18,0	8,8	11,5	black	5000	10000
058500180001001	GLR 18	18,0	8,8	11,5	black	1000	10000
058500180002000	GLR 18	18,0	8,8	11,5	grey	5000	10000
058500180003000	GLR 18	18,0	8,8	11,5	white	5000	10000
058500200001000	GLR 20	20,0	10,0	15,5	black	4000	-
058500200001001	GLR 20	20,0	10,0	15,5	black	1000	4000
058500200002000	GLR 20	20,0	10,0	15,5	grey	4000	8000
058500200003000	GLR 20	20,0	10,0	15,5	white	1000	7000
058500220001000	GLR 22	22,0	11,0	15,5	black	2000	-
058500220001001	GLR 22	22,0	11,0	15,5	black	500	2000
058500220002000	GLR 22	22,0	11,0	15,5	grey	1000	6000
058500220003000	GLR 22	22,0	11,0	15,5	white	1000	6000
058500250001000	GLR 25	25,0	11,5	15,5	black	3000	-
058500250001001	GLR 25	25,0	11,5	15,5	black	500	-
058500250002000	GLR 25	25,0	11,5	15,5	grey	3000	6000
058500280001000	GLR 28	28,0	14,0	14,5	black	2500	-
058500280001001	GLR 28	28,0	14,0	14,5	black	500	2500
058500280003000	GLR 28	28,0	14,0	14,5	white	2500	2500
058500300001000	GLR 30	30,0	14,2	17,5	black	1250	-
058500300002000	GLR 30	30,0	14,2	17,5	trafficygrey	1250	1250
058500320001000	GLR 32	32,0	16,0	20,0	black	1000	-
058500320002000	GLR 32	32,0	16,0	20,0	grey	1000	1000
058500320003000	GLR 32	32,0	16,0	20,0	white	1000	1000
058500350001000	GLR 35	35,0	17,3	19,5	black	800	-
058500350003000	GLR 35	35,0	17,3	19,5	white	800	800
058500400001000	GLR 40	39,5	21,3	12,0	black	1500	-
058500400001001	GLR 40	39,5	21,3	12,0	black	250	1500

Please note that the product illustrations are exemplary images that could deviate from the ordered/delivered products.

All of the dimensions are in mm should nothing to the contrary be stated.

*PU = Packaging Unit, SW = Spanner opening, n.w. = not detachable, o. K. = excl. The head, o. B. = excl. The collar, m. R. = with the radius, MOQ = Minimum Order Quantity.

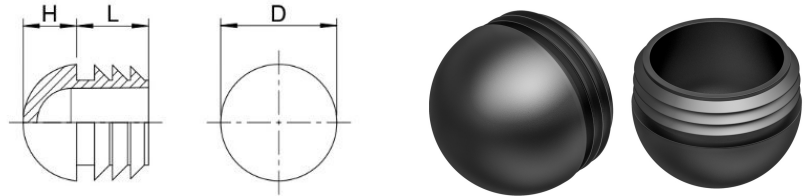
** MOQ: Parts with MOQ, set-up costs may apply.

! We exclusively sell to the trade and industry. Please note our minimum order quantities and the minimum order value per delivery. We would be pleased to send you an offer that is tailored to your needs should you require special colours, deviating dimensions, bioplastics, or larger order quantities.

Inserts with ball-head

Application: for round tubes
Material: polyethylene
Standard-Colour: black

GLR



Order No.	Article	Head Ø	Height	Shaft length	Colour	PU*	MOQ**
		D	H	L			
058500400003000	GLR 40	39,5	21,3	12,0	white	1500	3000
058500500001000	GLR 50	49,8	25,5	29,5	black	250	-
058500500002000	GLR 50	49,8	25,5	29,5	grey	250	250
058500600001000	GLR 60	60,0	30,0	39,4	black	200	800

Please note that the product illustrations are exemplary images that could deviate from the ordered/delivered products.

All of the dimensions are in mm should nothing to the contrary be stated.

*PU = Packaging Unit, SW = Spanner opening, n.w. = not detachable, o. K. = excl. The head, o. B. = excl. The collar, m. R. = with the radius, MOQ = Minimum Order Quantity.

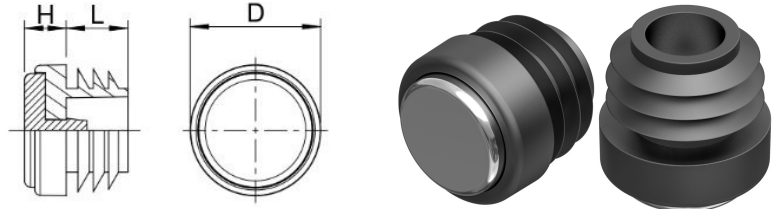
** MOQ: Parts with MOQ, set-up costs may apply.

We exclusively sell to the trade and industry. Please note our minimum order quantities and the minimum order value per delivery. We would be pleased to send you an offer that is tailored to your needs should you require special colours, deviating dimensions, bioplastics, or larger order quantities.

Low-noise glides

LGG

Application: for round tubes
 Additional Info: Attention! Please consider that not all glides have the same clamping ribs form
 Material: LD-PE / EVA / POM / PTFE
 Standard-Colour: black



Order No.	Tube outside Ø	Head Ø	Height	Shaft length	Colour	PU*	MOQ**
		D	H	L			
060316130001/PT	16 x 1,5-2	16	8,0	9,7	black	500	-
060318150001/PT	18 x 1,5-2	18	8,0	12,0	black	500	-
060319150001/PT	19 x 1,5-2	19	8,0	11,0	black	500	3000
060320170001/PT	20 x 1,5-2	20	8,0	12,0	black	500	2000
060322190001/PT	22 x 1,5-2	22	8,0	11,8	black	500	-
060325220001/PT	25 x 1,5-2	25	8,0	11,8	black	500	3000

Please note that the product illustrations are exemplary images that could deviate from the ordered/delivered products.

All of the dimensions are in mm should nothing to the contrary be stated.

*PU = Packaging Unit, SW = Spanner opening, n.w. = not detachable, o. K. = excl. The head, o. B. = excl. The collar, m. R. = with the radius, MOQ = Minimum Order Quantity.

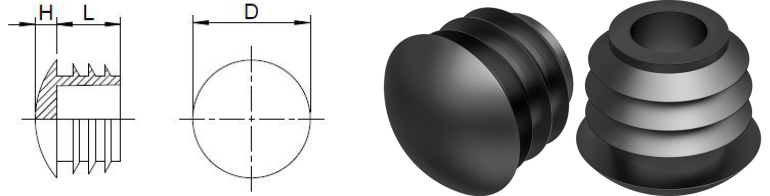
** MOQ: Parts with MOQ, set-up costs may apply.

We exclusively sell to the trade and industry. Please note our minimum order quantities and the minimum order value per delivery. We would be pleased to send you an offer that is tailored to your needs should you require special colours, deviating dimensions, bioplastics, or larger order quantities.



Inserts

Application: for round tubes
 Additional Info: Attention! Please consider that not all glides have the same clamping ribs form
 Material: polyethylene
 Standard-Colour: black



Order No.	Tube outside Ø	Reinforced base	Head Ø	Height	Shaft Ø	Shaft length	Rib Ø	Colour	PU*	MOQ**
			D	H	d	L	d1			
059000100001000	10	-	10,0	3,5	6,5	6,0	8,9	black	10000	-
059000100001001	10	-	10,0	3,5	6,5	6,0	8,9	black	1000	10000
059000100002000	10	-	10,0	3,5	6,5	6,0	8,9	grey	10000	10000
059000100002001	10	-	10,0	3,5	6,5	6,0	8,9	grey	1000	10000
059000100003000	10	-	10,0	3,5	6,5	6,0	8,9	white	10000	10000
059000100003001	10	-	10,0	3,5	6,5	6,0	8,9	white	1000	10000
059000120001000	12	-	12,1	4,0	8,0	10,0	11,2	black	10000	-
059000120001001	12	-	12,1	4,0	8,0	10,0	11,2	black	1000	10000
059000120002000	12	-	12,1	4,0	8,0	10,0	11,2	grey	10000	10000
059000120002001	12	-	12,1	4,0	8,0	10,0	11,2	grey	1000	10000
059000120003000	12	-	12,1	4,0	8,0	10,0	11,2	white	10000	10000
059000120003001	12	-	12,1	4,0	8,0	10,0	11,2	white	1000	10000
059000130001000	13	-	12,9	4,0	8,0	10,0	11,2	black	5000	-
059000130001001	13	-	12,9	4,0	8,0	10,0	11,2	black	1000	5000
059000130002000	13	-	12,9	4,0	8,0	10,0	11,2	grey	5000	5000
059000130003000	13	-	12,9	4,0	8,0	10,0	11,2	white	5000	5000
059000140001000	14	-	14,0	3,5	8,0	9,5	13,5	black	5000	-
059000140001001	14	-	14,0	3,5	8,0	9,5	13,5	black	1000	5000
059000140003000	14	-	14,0	3,5	8,0	9,5	13,5	white	5000	5000
059000150001000	15	-	15,0	4,4	8,0	9,0	13,5	black	5000	-
059000150001001	15	-	15,0	4,4	8,0	9,0	13,5	black	1000	5000
059000150002000	15	-	15,0	4,4	8,0	9,0	13,5	grey	5000	5000
059000150002001	15	-	15,0	4,4	8,0	9,0	13,5	grey	1000	5000
059000150003000	15	-	15,0	4,4	8,0	9,0	13,5	white	5000	5000
059000160001000	16	-	15,9	4,2	10,0	9,0	14,8	black	10000	-
059000160001001	16	-	15,9	4,2	10,0	9,0	14,8	black	1000	-
059000160002000	16	-	15,9	4,2	10,0	9,0	14,8	grey	10000	10000
059000160003000	16	-	15,9	4,2	10,0	9,0	14,8	white	10000	10000
059000180001000	18	-	18,1	4,3	13,3	12,0	16,8	black	10000	-
059000180001001	18	-	18,1	4,3	13,3	12,0	16,8	black	1000	10000
059000180002000	18	-	18,1	4,3	13,3	12,0	16,8	grey	10000	10000

Please note that the product illustrations are exemplary images that could deviate from the ordered/delivered products.

All of the dimensions are in mm should nothing to the contrary be stated.

*PU = Packaging Unit, SW = Spanner opening, n.w. = not detachable, o. K. = excl. The head, o. B. = excl. The collar, m. R. = with the radius, MOQ = Minimum Order Quantity.

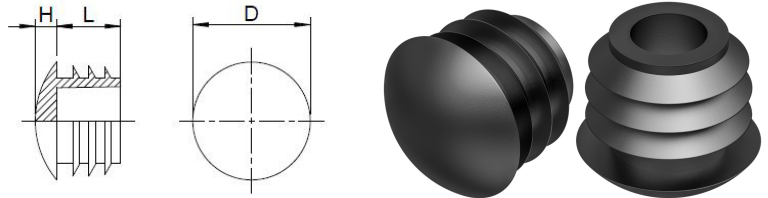
** MOQ: Parts with MOQ, set-up costs may apply.

! We exclusively sell to the trade and industry. Please note our minimum order quantities and the minimum order value per delivery.
 We would be pleased to send you an offer that is tailored to your needs should you require special colours, deviating dimensions, bioplastics, or larger order quantities.



Inserts

Application: for round tubes
Material: polyethylene
Standard-Colour: black



Order No.	Tube outside Ø	Reinforced base	Head Ø	Height	Shaft Ø	Shaft length	Rib Ø	Colour	PU*	MOQ**
			D	H	d	L	d1			
059000180003000	18	-	18,1	4,3	13,3	12,0	16,8	white	10000	10000
059000180003001	18	-	18,1	4,3	13,3	12,0	16,8	white	1000	10000
059000190001000	19	-	19,0	4,3	14,5	11,2	17,7	black	10000	10000
059000190001001	19	-	19,0	4,3	14,5	11,2	17,7	black	1000	10000
059000190002000	19	-	19,0	4,3	14,5	11,2	17,7	grey	10000	10000
059000190003000	19	-	19,0	4,3	14,5	11,2	17,7	white	10000	10000
059000190003001	19	-	19,0	4,3	14,5	11,2	17,7	white	1000	10000
059000200001000	20	-	20,0	5,0	15,5	11,8	19,0	black	5000	-
059000200002000	20	-	20,0	5,0	15,5	11,8	19,0	grey	5000	10000
059000200003000	20	-	20,0	5,0	15,5	11,8	19,0	white	5000	10000
059000220001000	22	-	22,0	4,0	16,3	11,8	20,7	black	5000	-
059000220001001	22	-	22,0	4,0	16,3	11,8	20,7	black	1000	5000
059000220002000	22	-	22,0	4,0	16,3	11,8	20,7	grey	5000	10000
059000220002001	22	-	22,0	4,0	16,3	11,8	20,7	grey	1000	10000
059000220003000	22	-	22,0	4,0	16,3	11,8	20,7	white	5000	10000
059000250001000	25	-	25,0	5,0	18,8	12,0	24,0	black	5000	-
059000250001001	25	-	25,0	5,0	18,8	12,0	24,0	black	500	-
059000250002000	25	-	25,0	5,0	18,8	12,0	24,0	grey	5000	10000
059000250002001	25	-	25,0	5,0	18,8	12,0	24,0	grey	500	10000
059000250003000	25	-	25,0	5,0	18,8	12,0	24,0	white	5000	10000
059000250003001	25	-	25,0	5,0	18,8	12,0	24,0	white	500	10000
059000270001000	27	-	27,0	5,0	21,4	13,8	26,2	black	2500	-
059000270001001	27	-	27,0	5,0	21,4	13,8	26,2	black	500	2500
059000270002000	27	-	27,0	5,0	21,4	13,8	26,2	grey	2500	2500
059000270003000	27	-	27,0	5,0	21,4	13,8	26,2	white	2500	2500
059000280001000	28	-	28,0	5,0	21,5	14,0	27,0	black	5000	-
059000280001001	28	-	28,0	5,0	21,5	14,0	27,0	black	500	5000
059000280002000	28	-	28,0	5,0	21,5	14,0	27,0	grey	5000	5000
059000280003000	28	-	28,0	5,0	21,5	14,0	27,0	white	5000	5000
059000300001000	30	-	30,1	5,0	23,3	14,0	28,8	black	3000	-
059000300001001	30	-	30,1	5,0	23,3	14,0	28,8	black	500	3000

Please note that the product illustrations are exemplary images that could deviate from the ordered/delivered products.

All of the dimensions are in mm should nothing to the contrary be stated.

*PU = Packaging Unit, SW = Spanner opening, n.w. = not detachable, o. K. = excl. The head, o. B. = excl. The collar, m. R. = with the radius, MOQ = Minimum Order Quantity.

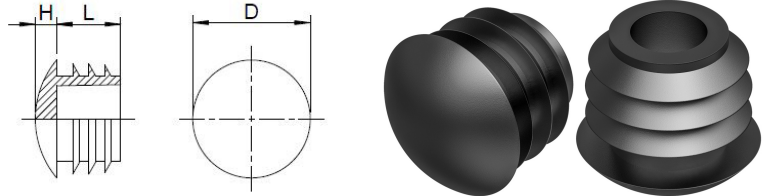
** MOQ: Parts with MOQ, set-up costs may apply.

! We exclusively sell to the trade and industry. Please note our minimum order quantities and the minimum order value per delivery.
We would be pleased to send you an offer that is tailored to your needs should you require special colours, deviating dimensions, bioplastics, or larger order quantities.



Inserts

Application: for round tubes
Material: polyethylene
Standard-Colour: black



Order No.	Tube outside Ø	Reinforced base	Head Ø	Height	Shaft Ø	Shaft length	Rib Ø	Colour	PU*	MOQ**
			D	H	d	L	d1			
059000300002000	30	-	30,1	5,0	23,3	14,0	28,8	grey	3000	-
059000300002001	30	-	30,1	5,0	23,3	14,0	28,8	grey	500	3000
059000300003000	30	-	30,1	5,0	23,3	14,0	28,8	white	3000	6000
059000320001000	32	-	32,1	5,0	26,3	14,6	30,2	black	2000	-
059000320001001	32	-	32,1	5,0	26,3	14,6	30,2	black	500	2000
059000320002000	32	-	32,1	5,0	26,3	14,6	30,2	grey	2000	4000
059000320003000	32	-	32,1	5,0	26,3	14,6	30,2	white	2000	4000
059000340001000	34	-	34,0	6,5	27,0	14,5	31,4	black	2500	-
059000340001001	34	-	34,0	6,5	27,0	14,5	31,4	black	500	2500
059000340002000	34	-	34,0	6,5	27,0	14,5	31,4	grey	2500	2500
059000340002001	34	-	34,0	6,5	27,0	14,5	31,4	grey	500	2500
059000350001000	35	-	35,0	6,0	29,5	14,0	34,4	black	2500	-
059000350001001	35	-	35,0	6,0	29,5	14,0	34,4	black	500	-
059000350002000	35	-	35,0	6,0	29,5	14,0	34,4	grey	2500	2500
059000350003000	35	-	35,0	6,0	29,5	14,0	34,4	white	2500	2500
059000360001000	36	-	35,8	6,5	29,3	13,9	34,5	black	1000	3000
059000360003000	36	-	35,8	6,5	29,3	13,9	34,5	white	1000	3000
059000380001000	38	-	37,9	5,5	31,4	11,5	36,1	black	1000	-
059000380002000	38	-	37,9	5,5	31,4	11,5	36,1	grey	1000	2000
059000380003000	38	-	37,9	5,5	31,4	11,5	36,1	white	1000	2000
059000400001000	40	-	40,0	6,0	33,6	12,0	38,3	black	1000	-
059000400002000	40	-	40,0	6,0	33,6	12,0	38,3	grey	1000	3000
059000400003000	40	-	40,0	6,0	33,6	12,0	38,3	white	1000	2000
059000420001000	42	-	42,0	6,0	35,5	12,0	40,0	black	1000	2000
059000420002000	42	-	42,0	6,0	35,5	12,0	40,0	grey	1000	2000
059000420003000	42	-	42,0	6,0	35,5	12,0	40,0	white	1000	3000
059000450001000	45	-	44,8	5,0	38,0	15,0	43,7	black	1000	-
059000450002000	45	-	44,8	5,0	38,0	15,0	43,7	grey	1000	1000
059000500001000	50 x 1,5-2,5	-	50,0	6,0	41,1	16,0	47,9	black	1000	2000
059000500003000	50 x 1,5-2,5	-	50,0	6,0	41,1	16,0	47,9	white	1000	2000
059000600001000	60 x 1,5-2,5	-	60,0	6,0	54,0	21,4	58,6	black	300	1200

Please note that the product illustrations are exemplary images that could deviate from the ordered/delivered products.

All of the dimensions are in mm should nothing to the contrary be stated.

*PU = Packaging Unit, SW = Spanner opening, n.w. = not detachable, o. K. = excl. The head, o. B. = excl. The collar, m. R. = with the radius, MOQ = Minimum Order Quantity.

** MOQ: Parts with MOQ, set-up costs may apply.

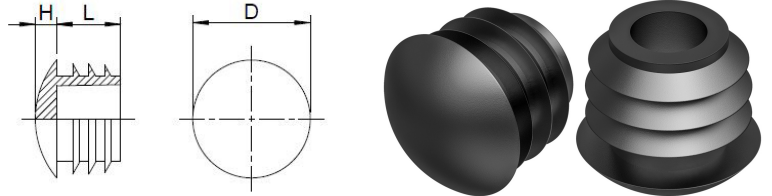
! We exclusively sell to the trade and industry. Please note our minimum order quantities and the minimum order value per delivery.
We would be pleased to send you an offer that is tailored to your needs should you require special colours, deviating dimensions, bioplastics, or larger order quantities.



IDEEN SIND FORMBAR
FORM YOUR IDEAS

Inserts

Application: for round tubes
Material: polyethylene
Standard-Colour: black



Order No.	Tube outside Ø	Reinforced base	Head Ø	Height	Shaft Ø	Shaft length	Rib Ø	Colour	PU*	MOQ**
			D	H	d	L	d1			
059000600002000								grey	300	1200
059000600003000	60x1,5-2,5		60,0	6,0	54,0	21,4	58,6	white	300	1200
059000800001000	80x1,5-3,0		80,0	5,5	68,0	22,0	78,0	black	300	600
059000800002000	80x1,5-3,0		80,0	5,5	68,0	22,0	78,0	grey	300	600
059000800003000	80x1,5-3,0		80,0	5,5	68,0	22,0	78,0	white	300	600
059300250001000	25	x 3	25,0	5,0	16,5	11,8	21,0	black	5000	10000
059300250001001	25	x 3	25,0	5,0	16,5	11,8	21,0	black	500	5000
059300250002000	25	x 3	25,0	5,0	16,5	11,8	21,0	grey	5000	10000
059300250003000	25	x 3	25,0	5,0	16,5	11,8	21,0	white	5000	10000
059600250001000	25	v.B.	24,9	8,0	19,2	11,5	23,3	black	3000	3000
059600250002000	25	v.B.	24,9	8,0	19,2	11,5	23,3	grey	3000	3000
059600250003000	25	v.B.	24,9	8,0	19,2	11,5	23,3	white	3000	3000
059600330001000	33	v.B.	32,9	10,0	26,0	14,0	30,0	black	2500	2500
059600330002000	33	v.B.	32,9	10,0	26,0	14,0	30,0	grey	2500	2500
059600330003000	33	v.B.	32,9	10,0	26,0	14,0	30,0	white	2500	2500

Please note that the product illustrations are exemplary images that could deviate from the ordered/delivered products.

All of the dimensions are in mm should nothing to the contrary be stated.

*PU = Packaging Unit, SW = Spanner opening, n.w. = not detachable, o. K. = excl. The head, o. B. = excl. The collar, m. R. = with the radius, MOQ = Minimum Order Quantity.

** MOQ: Parts with MOQ, set-up costs may apply.

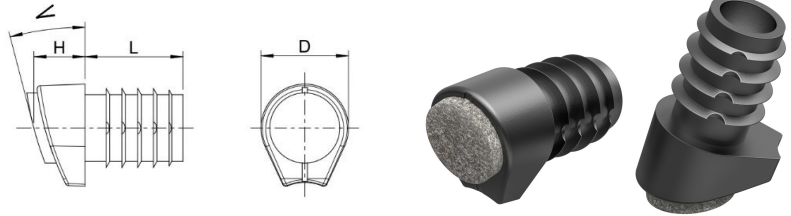
! We exclusively sell to the trade and industry. Please note our minimum order quantities and the minimum order value per delivery.
We would be pleased to send you an offer that is tailored to your needs should you require special colours, deviating dimensions, bioplastics, or larger order quantities.



Angled glides with stack protection and felt slide base

GFS

Application: for round tubes
 Additional Info: with angled bottom. Attention! Please consider that not all glides have the same clamping ribs form
 Material: polyethylene
 Standard-Colour: black



Order No.	Tube outside Ø	Height	Shaft Ø	Shaft length	Rib Ø	Angle A degrees	Stacking height protection	Colour	PU*	MOQ**
	D	H	d	L	d1	W	A			
066818220001000	18 x 1,5-2	11,4	12	21	15,6	12°-18°	3	black	500	-
066818280001000	18 x 1,5-2	13,7	12	21	15,6	18°-22°	3	black	100	2000
066820220001000	20 x 1,5-2	12,1	14	23	17,6	12°-18°	3	black	500	-
066820280001000	20 x 1,5-2	14,5	14	23	17,6	18°-22°	3	black	100	-
066822220001000	22 x 1,5-2	12,9	16	25	19,6	12°-18°	3	black	250	-
066822280001000	22 x 1,5-2	15,3	16	25	19,6	18°-22°	3	black	100	-
066825220001000	25 x 1,5-2	13,8	19	28	22,6	12°-18°	3	black	100	2000
066825280001000	25 x 1,5-2	16,3	19	28	22,6	18°-22°	3	black	100	2000

Please note that the product illustrations are exemplary images that could deviate from the ordered/delivered products.

All of the dimensions are in mm should nothing to the contrary be stated.

*PU = Packaging Unit, SW = Spanner opening, n.w. = not detachable, o. K. = excl. The head, o. B. = excl. The collar, m. R. = with the radius, MOQ = Minimum Order Quantity.

** MOQ: Parts with MOQ, set-up costs may apply.



We exclusively sell to the trade and industry. Please note our minimum order quantities and the minimum order value per delivery.

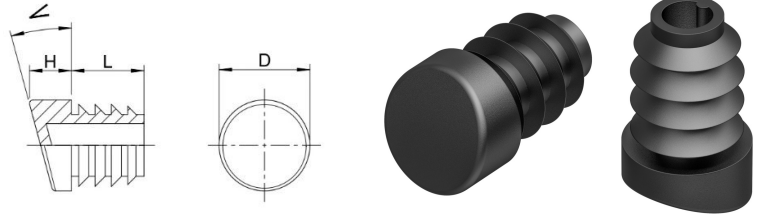
We would be pleased to send you an offer that is tailored to your needs should you require special colours, deviating dimensions, bioplastics, or larger order quantities.



Angled glides for round tubes

Application: for round tubes
 Additional Info: with angled bottom. Attention! Please consider that not all glides have the same clamping ribs form
 Material: polyethylene
 Standard-Colour: black

GR



Order No.	Tube size	For other tube wall thickness	Head	Height	Angle	Shaft	Ribs	Shaft	Colour	PU*	MOQ**
			D	H	W	d	d1	L			
065118120001000	18	1,5	18,0	7,2	12°	14,1	15,5	20,0	black	4000	-
065118150001000	18	1,5	18,0	9,0	15°	14,1	15,5	20,0	black	4000	-
065118210001000	18	1,5	18,0	11,0	21°	14,1	15,5	20,0	black	4000	-
065120090001000	20	1,5-2	20,0	7,0	9°	13,4	17,6	20,0	black	3000	-
065220090001000	20	2-2,5	20,0	7,0	9°	13,3	16,5	20,0	black	3000	-
065120120001000	20	1,5-2	20,0	9,0	12°	13,5	17,8	20,0	black	3000	-
065220120001000	20	2-2,5	20,0	9,0	12°	13,3	16,5	20,0	black	3000	-
065120150001000	20	1,5-2	20,0	10,0	15°	13,4	17,6	20,0	black	3000	-
065220150001000	20	2-2,5	20,0	10,0	15°	13,0	16,5	20,0	black	3000	-
065120180001000	20	1,5-2	20,0	11,0	18°	13,4	17,6	20,0	black	3000	-
065220180001000	20	2-2,5	20,0	11,0	18°	13,0	16,5	20,0	black	3000	-
065122090001000	22	1,5-2	22,0	7,8	9°	15,5	19,6	20,0	black	2500	-
065122120001000	22	1,5-2	22,0	8,0	12°	15,0	19,6	20,0	black	2500	-
065122150001000	22	1,5-2	22,0	10,0	15°	15,3	19,7	20,0	black	2500	-
065122180001000	22	1,5-2	22,0	10,0	18°	15,0	19,5	20,0	black	2500	-
065122220001000	22	1,5-2	22,0	11,5	22°	17,0	20,0	20,0	black	2500	-
065125090001000	25	1,5-2	25,0	8,5	9°	18,0	22,5	20,0	black	1750	-
065125120001000	25	1,5-2	25,0	9,5	12°	18,0	22,5	20,0	black	1750	-
065125150001000	25	1,5-2	25,0	12,0	15°	18,2	22,5	20,0	black	1750	-
065125180001000	25	1,5-2	25,0	12,0	18°	18,2	22,5	20,0	black	1750	-

Please note that the product illustrations are exemplary images that could deviate from the ordered/delivered products.

All of the dimensions are in mm should nothing to the contrary be stated.

*PU = Packaging Unit, SW = Spanner opening, n.w. = not detachable, o. K. = excl. The head, o. B. = excl. The collar, m. R. = with the radius, MOQ = Minimum Order Quantity.

** MOQ: Parts with MOQ, set-up costs may apply.



We exclusively sell to the trade and industry. Please note our minimum order quantities and the minimum order value per delivery.

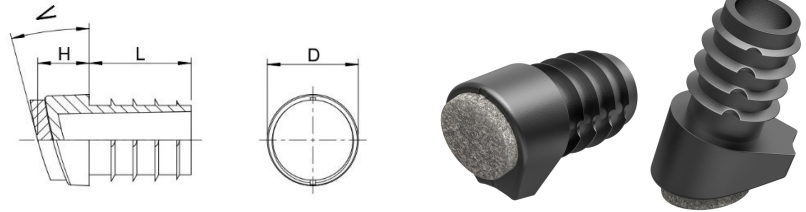
We would be pleased to send you an offer that is tailored to your needs should you require special colours, deviating dimensions, bioplastics, or larger order quantities.



Angled glides with felt slide base

Application: for round tubes
 Additional Info: with angled bottom. Attention! Please consider that not all glides have the same clamping ribs form
 Material: polyethylene
 Standard-Colour: black

GRF



Order No.	Tube outside Ø	Head Ø	Height	Shaft Ø	Shaft length	Rib Ø	Angle	Colour	PU*	MOQ**
		D	H	d	L	d1	W			
066818080001000	18 x 1,5-2	18	10,7	8,6	21	15,6	8°-12°	black	500	2000
066818120001000	18 x 1,5-2	18	11,4	12	21	15,6	12°-18°	black	500	-
066818180001000	18 x 1,5-2	18	13,7	12	21	15,6	18°-22°	black	500	-
066820120001000	20 x 1,5-2	20	12,1	14	23	17,6	12°-18°	black	500	-
066820180001000	20 x 1,5-2	20	14,5	14	23	17,6	18°-22°	black	500	-
066822120001000	22 x 1,5-2	22	12,9	16	25	19,6	12°-18°	black	1000	-
066822180001000	22 x 1,5-2	22	15,3	16	25	19,6	18°-22°	black	500	-
066825120001000	25 x 1,5-2	25	13,8	19	28	22,6	12°-18°	black	500	2500
066825180001000	25x1,5-2	25	16,3	19	28	22,6	18°-22°	black	1000	2000

Please note that the product illustrations are exemplary images that could deviate from the ordered/delivered products.

All of the dimensions are in mm should nothing to the contrary be stated.

*PU = Packaging Unit, SW = Spanner opening, n.w. = not detachable, o. K. = excl. The head, o. B. = excl. The collar, m. R. = with the radius, MOQ = Minimum Order Quantity.

** MOQ: Parts with MOQ, set-up costs may apply.

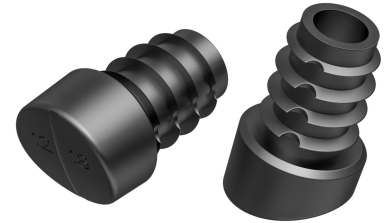
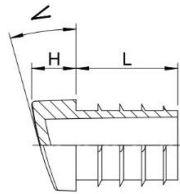
! We exclusively sell to the trade and industry. Please note our minimum order quantities and the minimum order value per delivery.
 We would be pleased to send you an offer that is tailored to your needs should you require special colours, deviating dimensions, bioplastics, or larger order quantities.



IDEEN SIND FORMBAR
FORM YOUR IDEAS

Angled glides

Application: for round tubes
Additional Info: with angled bottom. Attention! Please consider that not all glides have the same clamping ribs form
Material: polyethylene
Standard-Colour: black



Order No.	Tube outside Ø	Head Ø	Height	Shaft Ø	Shaft length	Rib Ø	Angle	Colour	PU*	MOQ**
		D	H	d	L	d1	W			
065818080001000	18 x 1,5-2	18	10,7	8,6	21	15,6	8°-12°	black	500	3500
065818120001000	Ø 18x1,5-2	18	11,4	12	21	15,6	12°-18°	black	5000	-
065818180001000	Ø 18x1,5-2	18	13,7	12	21	15,6	18°-22°	black	5000	-
065820120001000	Ø 20x1,5-2	20	12,1	14	23	17,6	12°-18°	black	3000	-
065820180001000	20 x 1,5-2	20	14,5	14	23	17,6	18°-22°	black	1000	-
065822120001000	22 x 1,5-2	22	12,9	16	25	19,6	12°-18°	black	1000	-
065822180001000	22 x 1,5-2	22	15,3	16	25	19,6	18°-22°	black	1000	4000
065825120001000	25 x 1,5-2	25	13,8	19	28	22,6	12°-18°	black	1000	-
065825180001000	25 x 1,5-2	25	16,3	19	28	22,6	18°-22°	black	1000	4000

Please note that the product illustrations are exemplary images that could deviate from the ordered/delivered products.

All of the dimensions are in mm should nothing to the contrary be stated.

*PU = Packaging Unit, SW = Spanner opening, n.w. = not detachable, o. K. = excl. The head, o. B. = excl. The collar, m. R. = with the radius, MOQ = Minimum Order Quantity.

** MOQ: Parts with MOQ, set-up costs may apply.



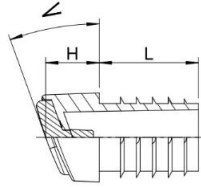
We exclusively sell to the trade and industry. Please note our minimum order quantities and the minimum order value per delivery.

We would be pleased to send you an offer that is tailored to your needs should you require special colours, deviating dimensions, bioplastics, or larger order quantities.

Angled glides with PA6 slide face

GRP 1

Application: for round tubes
Additional Info: with angled bottom
Material: polyethylene
Standard-Colour: black



Order No.	Tube outside ∅	Head ∅	Height	Shaft ∅	Shaft length	Rib ∅	Angle	Colour	PU*	MOQ**
		D	H	d	L	d1	W			
065818120001/PA	18 x 1,5-2	18	13,1	12	21	15,6	12°-18°	black	500	5000
065818180001/PA	18 x 1,5-2	18	15,4	12	21	15,6	18°-22°	black	500	5000
065820120001/PA	20 x 1,5-2	20	13,8	14	23	17,6	12°-18°	black	500	6000
065820180001/PA	20 x 1,5-2	20	16,2	14	23	17,6	18°-22°	black	500	6000
065822120001/PA	22 x 1,5-2	22	14,6	16	25	19,6	12°-18°	black	500	5000
065822180001/PA	22 x 1,5-2	22	17,0	16	25	19,6	18°-22°	black	500	4500
065825120001/PA	25 x 1,5-2	25	15,5	19	28	22,6	12°-18°	black	500	5000
065825180001/PA	25 x 1,5-2	25	18,0	19	28	22,6	18°-22°	black	500	5000

Please note that the product illustrations are exemplary images that could deviate from the ordered/delivered products.

All of the dimensions are in mm should nothing to the contrary be stated.

*PU = Packaging Unit, SW = Spanner opening, n.w. = not detachable, o. K. = excl. The head, o. B. = excl. The collar, m. R. = with the radius, MOQ = Minimum Order Quantity.

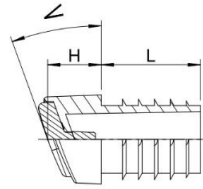
** MOQ: Parts with MOQ, set-up costs may apply.

We exclusively sell to the trade and industry. Please note our minimum order quantities and the minimum order value per delivery. We would be pleased to send you an offer that is tailored to your needs should you require special colours, deviating dimensions, bioplastics, or larger order quantities.



Angled glides with POM/PTFE slide face

Application: for round tubes
 Additional Info: with angled bottom
 Material: polyethylene
 Standard-Colour: black

GRP 2


Order No.	Tube outside Ø	Head Ø	Height	Shaft Ø	Shaft length	Rib Ø	Angle	Colour	PU*	MOQ**
		D	H	d	L	d1	W			
065818120001/PT	18 x 1,5-2	18	13,1	12	21	15,6	12°-18°	black	500	-
065818180001/PT	18 x 1,5-2	18	15,4	12	21	15,6	18°-22°	black	500	-
065820120001/PT	20 x 1,5-2	20	13,8	14	23	17,6	12°-18°	black	500	-
065820180001/PT	20 x 1,5-2	20	16,2	14	23	17,6	18°-22°	black	500	-
065822120001/PT	22 x 1,5-2	22	14,6	16	25	19,6	12°-18°	black	500	-
065822180001/PT	22 x 1,5-2	22	17,0	16	25	19,6	18°-22°	black	500	2500
065825120001/PT	25 x 1,5-2	25	15,5	19	28	22,6	12°-18°	black	500	3000
065825180001/PT	25 x 1,5-2	25	18,0	19	28	22,6	18°-22°	black	500	5000

Please note that the product illustrations are exemplary images that could deviate from the ordered/delivered products.

All of the dimensions are in mm should nothing to the contrary be stated.

*PU = Packaging Unit, SW = Spanner opening, n.w. = not detachable, o. K. = excl. The head, o. B. = excl. The collar, m. R. = with the radius, MOQ = Minimum Order Quantity.

** MOQ: Parts with MOQ, set-up costs may apply.



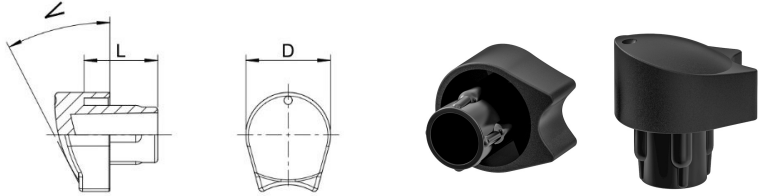
We exclusively sell to the trade and industry. Please note our minimum order quantities and the minimum order value per delivery.

We would be pleased to send you an offer that is tailored to your needs should you require special colours, deviating dimensions, bioplastics, or larger order quantities.

Angled glides with stack protection

Application: for round tubes
 Additional Info: with angled bottom. Attention! Please consider that not all glides have the same clamping ribs form
 Material: polyethylene
 Standard-Colour: black

GRS



Order No.	Tube outside \varnothing	Wall thickness	Shaft length	Overlap	Setup angle	Stack spacing	Colour	PU*	MOQ**
	D	E	S	U	AW	A			
065620300001000	20	1,5	20,0	7,0	0-30°	2-3	black	2000	2000
065720300001000	20	2,0	20,0	7,0	0-30°	2-3	black	2000	-
065622300001000	22	1,5	20,0	7,0	0-30°	2-3	black	1750	-
065722300001000	22	2,0	20,0	7,0	0-30°	2-3	black	1750	-
065625300001000	25	1,5	20,0	7,0	0-30°	2-3	black	1250	-
065725300001000	25	2,0	20,0	7,0	0-30°	2-3	black	1250	-

Please note that the product illustrations are exemplary images that could deviate from the ordered/delivered products.

All of the dimensions are in mm should nothing to the contrary be stated.

*PU = Packaging Unit, SW = Spanner opening, n.w. = not detachable, o. K. = excl. The head, o. B. = excl. The collar, m. R. = with the radius, MOQ = Minimum Order Quantity.

** MOQ: Parts with MOQ, set-up costs may apply.



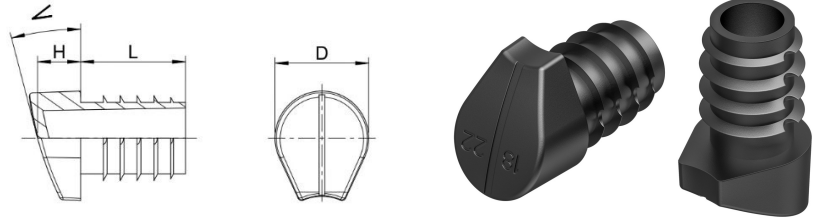
We exclusively sell to the trade and industry. Please note our minimum order quantities and the minimum order value per delivery.

We would be pleased to send you an offer that is tailored to your needs should you require special colours, deviating dimensions, bioplastics, or larger order quantities.



Angled glides with stack protection

Application: for round tubes
 Additional Info: with angled bottom. Attention! Please consider that not all glides have the same clamping ribs form
 Material: polyethylene
 Standard-Colour: black



Order No.	Tube outside ø	Height	Shaft ø	Shaft lengt	Rib ø	Angle	Stacking height protection	Colour	PU*	MOQ**
	D	H	d	L	d1	W	A			
065818220001000	18 x 1,5-2	11,4	12	21	15,6	12°-18°	3	black	5000	5000
065818280001000	18 x 1,5-2	13,7	12	21	15,6	18°-22°	3	black	5000	5000
065820220001000	20 x 1,5-2	12,1	14	23	17,6	12°-18°	3	black	3000	6000
065820280001000	20 x 1,5-2	14,5	14	23	17,6	18°-22°	3	black	2500	5000
065822220001000	22 x 1,5-2	12,9	16	25	19,6	12°-18°	3	black	1000	4000
065822280001000	22 x 1,5-2	15,3	16	25	19,6	18°-22°	3	black	1000	3000
065825220001000	25 x 1,5-2	13,8	19	28	22,6	12°-18°	3	black	1000	4000
065825280001000	25 x 1,5-2	16,3	19	28	22,6	18°-22°	3	black	1000	4000

Please note that the product illustrations are exemplary images that could deviate from the ordered/delivered products.

All of the dimensions are in mm should nothing to the contrary be stated.

*PU = Packaging Unit, SW = Spanner opening, n.w. = not detachable, o. K. = excl. The head, o. B. = excl. The collar, m. R. = with the radius, MOQ = Minimum Order Quantity.

** MOQ: Parts with MOQ, set-up costs may apply.



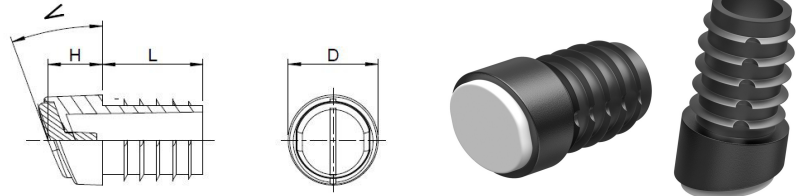
We exclusively sell to the trade and industry. Please note our minimum order quantities and the minimum order value per delivery.

We would be pleased to send you an offer that is tailored to your needs should you require special colours, deviating dimensions, bioplastics, or larger order quantities.



Low-noise glides

Application: for round tubes
 Additional Info: with angled bottom. Attention! Please consider that not all glides have the same clamping ribs form
 Material: LD-PE / EVA / POM / PTFE
 Standard-Colour: black

LGS


Order No.	Tube outside \varnothing	Head \varnothing	Height	Shaft length	Angle	Colour	PU*	MOQ**
		D	H	L	W			
065918120001/PT	18 x 1,5-2	18	13,1	21,0	12°-18°	black	1000	-
065918180001/PT	18 x 1,5-2	18	15,4	21,0	18°-22°	black	1000	-
065920120001/PT	20 x 1,5-2	20	13,8	23,0	12°-18°	black	500	4000
065920180001/PT	20 x 1,5-2	20	16,2	23,0	18°-22°	black	500	2500
065922120001/PT	22 x 1,5-2	22	14,6	25,0	12°-18°	black	500	2500
065922180001/PT	22 x 1,5-2	22	17,0	25,0	18°-22°	black	500	2500
065925120001/PT	25 x 1,5-2	25	15,5	28,0	12°-18°	black	500	2500
065925180001/PT	25 x 1,5-2	25	18,0	28,0	18°-22°	black	500	2500

Please note that the product illustrations are exemplary images that could deviate from the ordered/delivered products.

All of the dimensions are in mm should nothing to the contrary be stated.

*PU = Packaging Unit, SW = Spanner opening, n.w. = not detachable, o. K. = excl. The head, o. B. = excl. The collar, m. R. = with the radius, MOQ = Minimum Order Quantity.

** MOQ: Parts with MOQ, set-up costs may apply.



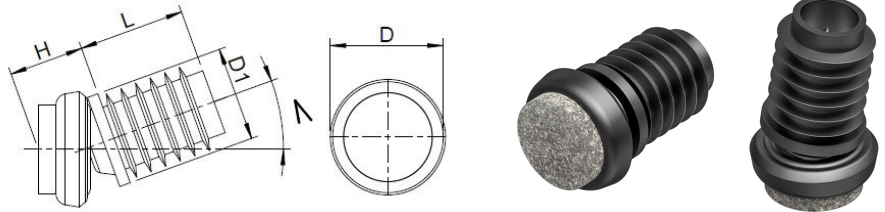
We exclusively sell to the trade and industry. Please note our minimum order quantities and the minimum order value per delivery.

We would be pleased to send you an offer that is tailored to your needs should you require special colours, deviating dimensions, bioplastics, or larger order quantities.

Tilt glides with felt slide base

Application: for round tubes
 Additional Info: Attention! Please consider that not all glides have the same clamping ribs form
 Material: PE/ PVC / PA / steel/felt
 Standard-Colour: black

GDF



Order No.	Base \emptyset	Tube outside \emptyset	Height	Shaft length	Colour	PU*	MOQ**
	D1	D	H	L			
D86-10L-230001/FI	23	10	13,0	17,0	black	100	100
D86-12L-230001/FI	23	12	13,0	24,0	black	100	-
D86-14L-230001/FI	23	14	13,0	24,0	black	100	-
D86-14L-270001/FI	27	14	13,0	24,0	black	100	100
D86-16L-230001/FI	23	16	13,0	24,0	black	100	100
D86-16L-270001/FI	27	16	13,0	24,0	black	100	100
D86-18L-230001/FI	23	18	13,0	24,0	black	100	100
D86-18L-270001/FI	27	18	13,0	24,0	black	100	100

Please note that the product illustrations are exemplary images that could deviate from the ordered/delivered products.

All of the dimensions are in mm should nothing to the contrary be stated.

*PU = Packaging Unit, SW = Spanner opening, n.w. = not detachable, o. K. = excl. The head, o. B. = excl. The collar, m. R. = with the radius, MOQ = Minimum Order Quantity.

** MOQ: Parts with MOQ, set-up costs may apply.



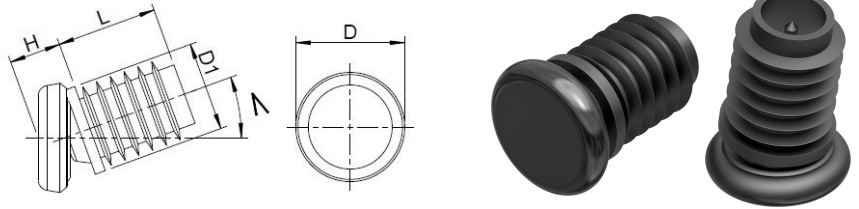
We exclusively sell to the trade and industry. Please note our minimum order quantities and the minimum order value per delivery.

We would be pleased to send you an offer that is tailored to your needs should you require special colours, deviating dimensions, bioplastics, or larger order quantities.

Tilt glides with plastic slide base

GDK

Application: for round tubes
 Additional Info: Attention! Please consider that not all glides have the same clamping ribs form
 Material: PE / PVC / PA
 Standard-Colour: black



Order No.	Base \varnothing	Tube outside \varnothing	Height	Shaft length	Colour	PU*	MOQ**
	D1	D	H	L			
D86-10L-230001/KU	23	10	13,0	17,0	black	100	100
D86-12L-230001/KU	23	12	13,0	26,0	black	100	1000
D86-14L-230001/KU	23	14	13,0	24,0	black	100	100
D86-14L-270001/KU	27	14	13,0	24,0	black	100	-
D86-16L-230001/KU	23	16	13,0	24,0	black	100	100
D86-16L-270001/KU	27	16	13,0	24,0	black	100	100
D86-18L-230001/KU	23	18	13,0	24,0	black	100	-
D86-18L-270001/KU	27	18	13,0	24,0	black	100	100

Please note that the product illustrations are exemplary images that could deviate from the ordered/delivered products.

All of the dimensions are in mm should nothing to the contrary be stated.

*PU = Packaging Unit, SW = Spanner opening, n.w. = not detachable, o. K. = excl. The head, o. B. = excl. The collar, m. R. = with the radius, MOQ = Minimum Order Quantity.

** MOQ: Parts with MOQ, set-up costs may apply.



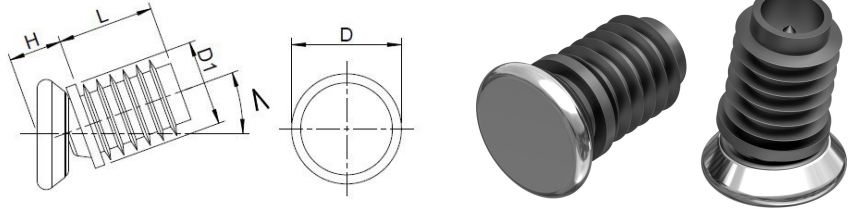
We exclusively sell to the trade and industry. Please note our minimum order quantities and the minimum order value per delivery.

We would be pleased to send you an offer that is tailored to your needs should you require special colours, deviating dimensions, bioplastics, or larger order quantities.

Tilt glides with metal slide base

GDM

Application: for round tubes
 Additional Info: Attention! Please consider that not all glides have the same clamping ribs form
 Material: PE / PVC / PA / steel
 Standard-Colour: black



Order No.	Base \varnothing	Tube outside \varnothing	Height	Shaft length	Colour	PU*	MOQ**
	D1	D	H	L			
D86-10L-230001/ME	23	10	12,5	17,0	black	100	100
D86-12L-230001/ME	23	12	13,0	26,0	black	100	100
D86-14L-230001/ME	23	14	13,0	24,0	black	100	100
D86-14L-270001/ME	27	14	13,0	24,0	black	100	100
D86-16L-230001/ME	23	16	13,0	24,0	black	100	100
D86-16L-270001/ME	27	16	13,0	24,0	black	100	100
D86-18L-230001/ME	23	18	12,5	24,0	black	100	100
D86-18L-270001/ME	27	18	12,5	24,0	black	100	100

Please note that the product illustrations are exemplary images that could deviate from the ordered/delivered products.

All of the dimensions are in mm should nothing to the contrary be stated.

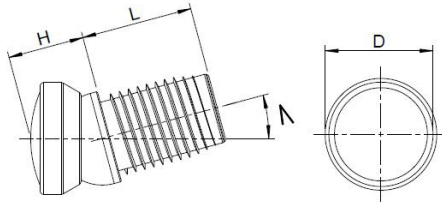
*PU = Packaging Unit, SW = Spanner opening, n.w. = not detachable, o. K. = excl. The head, o. B. = excl. The collar, m. R. = with the radius, MOQ = Minimum Order Quantity.

** MOQ: Parts with MOQ, set-up costs may apply.

We exclusively sell to the trade and industry. Please note our minimum order quantities and the minimum order value per delivery. We would be pleased to send you an offer that is tailored to your needs should you require special colours, deviating dimensions, bioplastics, or larger order quantities.

Tilt glides with felt slide base

Application: for round tubes
 Additional Info: Attention! Please consider that not all glides have the same clamping ribs form
 Material: PA6 / felt
 Standard-Colour: black

GFN


Order No.	Base Ø	Tube outside Ø	Height	Shaft length	Angle	Colour	PU*	MOQ**
		D	H	L	W			
064250190001/FI	25	19 x 1,5-2	18,0	24,5	max. 19°	black	1250	1250
064250200001/FI	25	20x1,5-2	18,0	24,5	max. 19°	black	1250	1250
064250220001/FI	25	22 x 1,5-2	18,0	24,5	max. 19°	black	1000	1000
064250250001/FI	25	25 x 1,5-2	18,0	24,5	max. 19°	black	800	800
064250280001/FI	25	28 x 1,5-2	18,0	24,5	max. 19°	black	800	800
064300190001/FI	30	19 x 1,5-2	18,5	24,5	max. 19°	black	1000	1000
064300200001/FI	30	20 x 1,5-2	18,5	24,5	max. 19°	black	1000	1000
064300220001/FI	30	22 x 1,5-2	18,3	24,5	max. 19°	black	800	800
064300250001/FI	30	25 x 1,5-2	18,5	24,5	max. 19°	black	750	800
064300280001/FI	30	28 x 1,5-2	18,5	24,5	max. 19°	black	600	600

Please note that the product illustrations are exemplary images that could deviate from the ordered/delivered products.

All of the dimensions are in mm should nothing to the contrary be stated.

*PU = Packaging Unit, SW = Spanner opening, n.w. = not detachable, o. K. = excl. The head, o. B. = excl. The collar, m. R. = with the radius, MOQ = Minimum Order Quantity.

** MOQ: Parts with MOQ, set-up costs may apply.

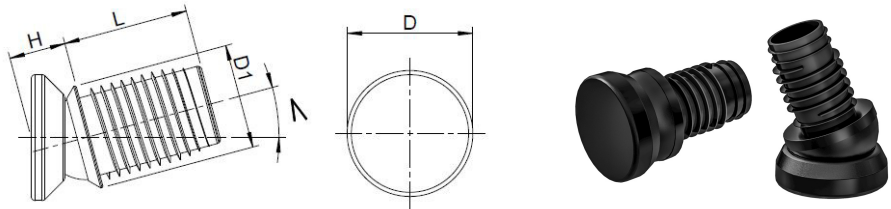


We exclusively sell to the trade and industry. Please note our minimum order quantities and the minimum order value per delivery.

We would be pleased to send you an offer that is tailored to your needs should you require special colours, deviating dimensions, bioplastics, or larger order quantities.

Tilt glides

Application: for round tubes
 Additional Info: Attention! Please consider that not all glides have the same clamping ribs form
 Material: PA 6
 Standard-Colour: black

GKN


Order No.	Base \varnothing	Tube outside \varnothing	Height	Shaft length	Angle	Colour	PU*	MOQ**
		D	H	L	W			
064250180001000	25	18 x 1,5-2	15,5	24,5	max. 19°	black	1250	1250
064250190001000	25	19 x 1,5-2	18,0	24,5	max. 19°	black	1250	1250
064250200001000	25	20 x 1,5-2	18,5	24,5	max. 19°	black	1250	1250
064250220001000	25	22 x 1,5-2	18,5	24,5	max. 19°	black	1000	1000
064250250001000	25	25 x 1,5-2	18,0	24,5	max. 19°	black	800	800
064250280001000	25	28 x 1,5-2	18,5	24,5	max. 19°	black	800	800
064300190001000	30	19 x 1,5-2	19,0	24,5	max. 19°	black	1000	1000
064300200001000	30	20 x 1,5-2	19,0	24,5	max. 19°	black	1000	1000
064300220001000	30	22 x 1,5-2	19,0	24,5	max. 19°	black	800	800
064300250001000	30	25 x 1,5-2	19,0	24,5	max. 19°	black	800	800
064300280001000	30	28 x 1,5-2	19,0	24,5	max. 19°	black	650	650

Please note that the product illustrations are exemplary images that could deviate from the ordered/delivered products.

All of the dimensions are in mm should nothing to the contrary be stated.

*PU = Packaging Unit, SW = Spanner opening, n.w. = not detachable, o. K. = excl. The head, o. B. = excl. The collar, m. R. = with the radius, MOQ = Minimum Order Quantity.

** MOQ: Parts with MOQ, set-up costs may apply.



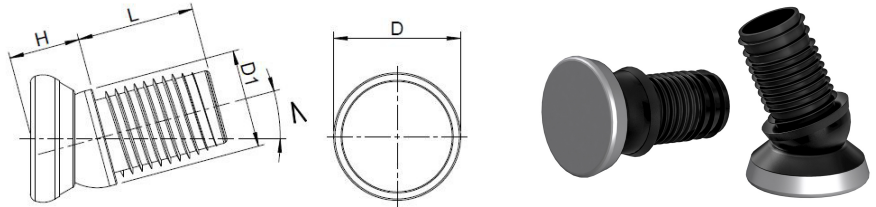
We exclusively sell to the trade and industry. Please note our minimum order quantities and the minimum order value per delivery.

We would be pleased to send you an offer that is tailored to your needs should you require special colours, deviating dimensions, bioplastics, or larger order quantities.

Tilt glides with metal slide base

GMN

Application: for round tubes
 Additional Info: Attention! Please consider that not all glides have the same clamping ribs form
 Material: PA 6 / stainless steel
 Standard-Colour: black



Order No.	Base Ø	Tube outside Ø	Height	Shaft length	Angle	Colour	PU*	MOQ**
		D	H	L	W			
064250190001/ES	25	19 x 1,5-2	18,0	24,5	max. 19°	black	1250	1250
064250200001/ES	25	20 x 1,5-2	18,0	24,5	max. 19°	black	1250	1250
064250220001/ES	25	22 x 1,5-2	18,0	24,5	max. 19°	black	1000	1000
064250250001/ES	25	25 x 1,5-2	18,0	24,5	max. 19°	black	1000	1000
064250280001/ES	25	28 x 1,5-2	18,0	24,5	max. 19°	black	800	800
064300190001/ES	30	19 x 1,5-2	17,0	24,5	max. 19°	black	1250	1250
064300200001/ES	30	20 x 1,5-2	17,0	24,5	max. 19°	black	1000	1000
064300220001/ES	30	22 x 1,5-2	17,0	24,5	max. 19°	black	800	800
064300250001/ES	30	25 x 1,5-2	17,0	24,5	max. 19°	black	800	800
064300280001/ES	30	28 x 1,5-2	17,0	24,5	max. 19°	black	750	750

Please note that the product illustrations are exemplary images that could deviate from the ordered/delivered products.

All of the dimensions are in mm should nothing to the contrary be stated.

*PU = Packaging Unit, SW = Spanner opening, n.w. = not detachable, o. K. = excl. The head, o. B. = excl. The collar, m. R. = with the radius, MOQ = Minimum Order Quantity.

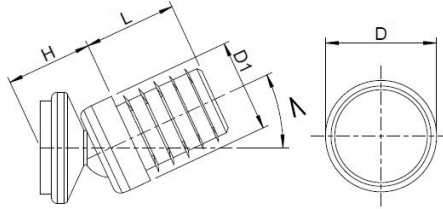
** MOQ: Parts with MOQ, set-up costs may apply.

We exclusively sell to the trade and industry. Please note our minimum order quantities and the minimum order value per delivery. We would be pleased to send you an offer that is tailored to your needs should you require special colours, deviating dimensions, bioplastics, or larger order quantities.

Tilt glides with felt slide base

GOF

Application: for round tubes
 Additional Info: Attention! Please consider that not all glides have the same clamping ribs form
 Material: PA / PP / felt
 Standard-Colour: black



Order No.	Base \emptyset	Tube outside \emptyset	Height	Shaft length	Angle	Colour	PU*	MOQ**
		D	H	L	W			
064100160001/FI	22	16 x 1,5-2	23	25	max 25°	black	500	-
064100180001/FI	22	18 x 1,5-2	23	25	max 25°	black	500	1000
064100200001/FI	25	20 x 1,5-2	23	25	max 25°	black	500	-
064100220001/FI	25	22 x 1,5-2	23	25	max 25°	black	500	-
064100250001/FI	30	25 x 1,5-2	26	25	max 25°	black	500	1000

Please note that the product illustrations are exemplary images that could deviate from the ordered/delivered products.

All of the dimensions are in mm should nothing to the contrary be stated.

*PU = Packaging Unit, SW = Spanner opening, n.w. = not detachable, o. K. = excl. The head, o. B. = excl. The collar, m. R. = with the radius, MOQ = Minimum Order Quantity.

** MOQ: Parts with MOQ, set-up costs may apply.

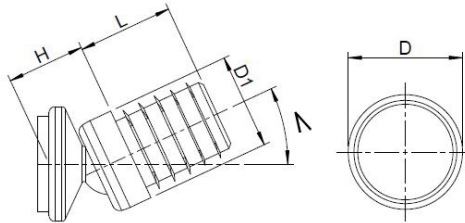


We exclusively sell to the trade and industry. Please note our minimum order quantities and the minimum order value per delivery.

We would be pleased to send you an offer that is tailored to your needs should you require special colours, deviating dimensions, bioplastics, or larger order quantities.

Tilt glides

Application: for round tubes
 Additional Info: Attention! Please consider that not all glides have the same clamping ribs form
 Material: PA / PP
 Standard-Colour: black

GOL


Order No.	Base \emptyset	Tube outside \emptyset	Height	Shaft length	Angle	Colour	PU*	MOQ**
		D	H	L	W			
064100160001000	22	16 x 1,5-2	20	25	max 25°	black	1000	-
064100180001000	22	18 x 1,5-2	20	25	max 25°	black	1000	-
064100200001000	25	20 x 1,5-2	20	25	max 25°	black	1000	-
064100220001000	25	22 x 1,5-2	20	25	max 25°	black	1000	1000
064100250001000	30	25 x 1,5-2	22	25	max 25°	black	1000	1000

Please note that the product illustrations are exemplary images that could deviate from the ordered/delivered products.

All of the dimensions are in mm should nothing to the contrary be stated.

*PU = Packaging Unit, SW = Spanner opening, n.w. = not detachable, o. K. = excl. The head, o. B. = excl. The collar, m. R. = with the radius, MOQ = Minimum Order Quantity.

** MOQ: Parts with MOQ, set-up costs may apply.



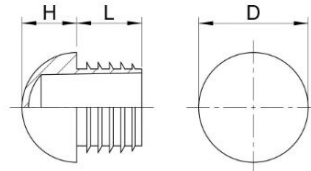
We exclusively sell to the trade and industry. Please note our minimum order quantities and the minimum order value per delivery.

We would be pleased to send you an offer that is tailored to your needs should you require special colours, deviating dimensions, bioplastics, or larger order quantities.



Inserts for inch tubes with half-round head

Application: for inch tubes
 Additional Info: Attention! Please consider that not all glides have the same clamping ribs form
 Material: polyethylene
 Standard-Colour: black



Order No.	Tube size in inch	Approx. tube outside \varnothing	Head \varnothing	Shaft \varnothing	Rib \varnothing	Head height	Shaft length	Colour	PU*	MOQ**
			D	d	d1	H	L			
058401250003000								white	500	1500
058400500001000	R 1/2	21,3 x 2,65	21,3	12,8	16,6	10,65	20	black	2500	2500
058400500003000	R 1/2	21,3 x 2,65	21,3	12,8	16,6	10,65	20	white	2500	2500
058400750001000	R 3/4	26,9 x 2,65	26,9	18,4	22,2	13,45	20	black	1000	-
058400750001001	R 3/4	26,9 x 2,65	26,9	18,4	22,2	13,45	20	black	250	1000
058400750003000	R 3/4	26,9 x 2,65	26,9	18,4	22,2	13,45	20	white	1000	3000
058401000001000	R 1	33,7 x 3,25	33,7	23,6	27,8	16,85	20	black	1000	-
058401000003000	R 1	33,7 x 3,25	33,7	23,6	27,8	16,85	20	white	1000	3000
058401250001000	R 1 1/4	42,4 x 3,25	42,4	32,3	36,5	21,20	25	black	500	1500
058401500001000	R 1 1/2	48,3 x 3,25	48,3	38,2	42,4	24,15	25	black	500	-
058401500003000	R 1 1/2	48,3 x 3,25	48,3	38,2	42,4	24,15	25	white	500	1500
058402000001000	R 2	60,3 x 3,65	60,3	49,3	53,6	30,15	25	black	400	1200

Please note that the product illustrations are exemplary images that could deviate from the ordered/delivered products.

All of the dimensions are in mm should nothing to the contrary be stated.

*PU = Packaging Unit, SW = Spanner opening, n.w. = not detachable, o. K. = excl. The head, o. B. = excl. The collar, m. R. = with the radius, MOQ = Minimum Order Quantity.

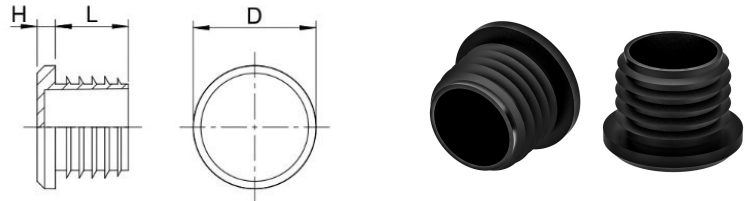
** MOQ: Parts with MOQ, set-up costs may apply.

! We exclusively sell to the trade and industry. Please note our minimum order quantities and the minimum order value per delivery. We would be pleased to send you an offer that is tailored to your needs should you require special colours, deviating dimensions, bioplastics, or larger order quantities.



Inserts for inch tubes

Application: for inch tubes
 Additional Info: optionally available with welded felt.
 Attention! Please consider that not all glides have the same clamping ribs form
 Material: polyethylene
 Standard-Colour: black



Order No.	Tube size	Approx. tube outside \varnothing	Head \varnothing	Shaft \varnothing	Rib \varnothing	Head height	Shaft length	Colour	PU*	MOQ**
	in inch		D	d	d1	H	L			
058300500001000	R 1/2	21,3 x 2,65	21,3	12,8	16,6	5	20	black	5000	5000
058300500001001	R 1/2	21,3 x 2,65	21,3	12,8	16,6	5	20	black	1000	-
058300500003000	R 1/2	21,3 x 2,65	21,3	12,8	16,6	5	20	white	5000	5000
058300500003001	R 1/2	21,3 x 2,65	21,3	12,8	16,6	5	20	white	1000	5000
058300750001000	R 3/4	26,9 x 2,65	26,9	18,4	22,2	5	20	black	1000	-
058300750003000	R 3/4	26,9 x 2,65	26,9	18,4	22,2	5	20	white	1000	3000
058301000001000	R 1	33,7 x 3,25	33,7	23,6	27,8	5	20	black	1000	-
058301000003000	R 1	33,7 x 3,25	33,7	23,6	27,8	5	20	white	1000	3000
058301250001000	R 1 1/4	42,4 x 3,25	42,4	32,3	36,5	6	25	black	500	-
058301250003000	R 1 1/4	42,4 x 3,25	42,4	32,3	36,5	6	25	white	500	1500
058301500001000	R 1 1/2	48,3 x 3,25	48,3	38,2	42,4	6	25	black	500	1500
058301500003000	R 1 1/2	48,3 x 3,25	48,3	38,2	42,4	6	25	white	500	1500
058302000001000	R 2	60,3 x 3,65	60,3	49,3	53,6	6	25	black	500	-

Please note that the product illustrations are exemplary images that could deviate from the ordered/delivered products.

All of the dimensions are in mm should nothing to the contrary be stated.

*PU = Packaging Unit, SW = Spanner opening, n.w. = not detachable, o. K. = excl. The head, o. B. = excl. The collar, m. R. = with the radius, MOQ = Minimum Order Quantity.

** MOQ: Parts with MOQ, set-up costs may apply.



We exclusively sell to the trade and industry. Please note our minimum order quantities and the minimum order value per delivery.

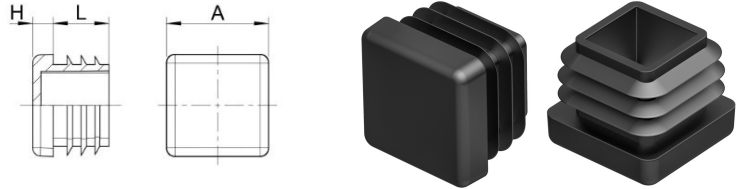
We would be pleased to send you an offer that is tailored to your needs should you require special colours, deviating dimensions, bioplastics, or larger order quantities.



Inserts for square tubes

E

Application: for square tubes
 Additional Info: optionally available with welded felt
 Material: polyethylene
 Standard-Colour: black



Order No.	Tube outside \varnothing	For other tube wall thickness	Head \varnothing	Height	Shaft length	Colour	PU*	MOQ**
			A	H	L			
061015150001000	15 x 15		15,3	5,0	11,5	black	5000	-
061015150001001	15 x 15		15,3	5,0	11,5	black	1000	5000
061015150002000	15 x 15		15,3	5,0	11,5	grey	5000	5000
061015150003000	15 x 15		15,3	5,0	11,5	white	5000	5000
061015150003001	15 x 15		15,3	5,0	11,5	white	1000	5000
061016160001000	16 x 16		16,2	5,0	12,0	black	5000	5000
061016160001001	16 x 16		16,2	5,0	12,0	black	1000	5000
061016160002000	16 x 16		16,2	5,0	12,0	grey	5000	5000
061016160003000	16 x 16		16,2	5,0	12,0	white	5000	5000
061016160003001	16 x 16		16,2	5,0	12,0	white	1000	5000
061018180001000	18 x 18		18,0	5,0	11,0	black	5000	5000
061018180001001	18 x 18		18,0	5,0	11,0	black	1000	5000
061018180002000	18 x 18		18,0	5,0	11,0	grey	5000	5000
061018180003000	18 x 18		18,0	5,0	11,0	white	5000	5000
061020200001000	20 x 20		20,0	5,0	12,0	black	2500	-
061020200002000	20 x 20		20,0	5,0	12,0	grey	2500	-
061020200003000	20 x 20		20,0	5,0	12,0	white	2500	-
061022220001000	22 x 22		22,2	5,0	14,0	black	5000	5000
061022220001001	22 x 22		22,2	5,0	14,0	black	500	5000
061022220003000	22 x 22		22,2	5,0	14,0	white	5000	5000
061025250001000	25 x 25		25,0	5,0	13,5	black	2500	-
061025250001001	25 x 25		25,0	5,0	13,5	black	500	-
061025250002000	25 x 25		25,0	5,0	13,5	grey	2500	-
061025250003000	25 x 25		25,0	5,0	13,5	white	2500	-
061027270001000	27 x 27		27,1	5,0	15,0	black	2000	4000
061027270001001	27 x 27		27,1	5,0	15,0	black	500	4000
061027270002000	27 x 27		27,1	5,0	15,0	grey	2000	4000
061027270003000	27 x 27		27,1	5,0	15,0	white	2000	4000
061030300001000	30 x 30		30,0	5,0	13,5	black	2500	-
061030300001001	30 x 30		30,0	5,0	13,5	black	500	-
061030300002000	30 x 30		30,0	5,0	13,5	grey	2500	-

Please note that the product illustrations are exemplary images that could deviate from the ordered/delivered products.

All of the dimensions are in mm should nothing to the contrary be stated.

*PU = Packaging Unit, SW = Spanner opening, n.w. = not detachable, o. K. = excl. The head, o. B. = excl. The collar, m. R. = with the radius, MOQ = Minimum Order Quantity.

** MOQ: Parts with MOQ, set-up costs may apply.

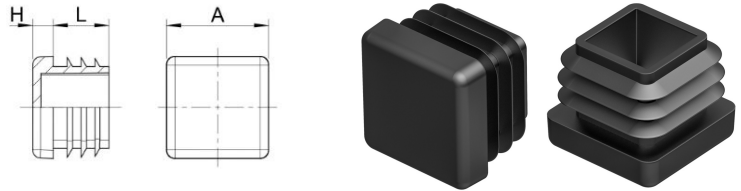
! We exclusively sell to the trade and industry. Please note our minimum order quantities and the minimum order value per delivery. We would be pleased to send you an offer that is tailored to your needs should you require special colours, deviating dimensions, bioplastics, or larger order quantities.



Inserts for square tubes

Application: for square tubes
 Material: polyethylene
 Standard-Colour: black

E



Order No.	Tube outside Ø	For other tube wall thickness	Head Ø	Height	Shaft length	Colour	PU*	MOQ**
			A	H	L			
061030300003000	30 x 30		30,0	5,0	13,5	white	2500	-
061030300003001	30 x 30		30,0	5,0	13,5	white	500	2500
061032320001000	32 x 32	x 1-3,5	32,0	5,0	11,9	black	1500	1500
061032320002000	32 x 32	x 1-3,5	32,0	5,0	11,9	grey	1500	1500
061032320003000	32 x 32	x 1-3,5	32,0	5,0	11,9	white	1500	1500
061035350001000	35 x 35	x 1,5-2	35,0	5,0	14,5	black	1000	-
061035350002000	35 x 35	x 3-5	35,0	5,0	14,5	grey	1000	4000
061035350003000	35 x 35	x 3-5	35,0	5,0	14,5	white	1000	4000
061038380001000	38 x 38	x 1-3,5	37,7	5,0	14,5	black	850	-
061038380002000	38 x 38	x 1-3,5	37,7	5,0	14,5	grey	850	850
061038380003000	38 x 38	x 1-3,5	37,7	5,0	14,5	white	850	850
061040400001000	40 x 40		40,0	5,0	14,0	black	1000	-
061040400002000	40 x 40		40,0	5,0	14,0	grey	1000	-
061040400003000	40 x 40		40,0	5,0	14,0	white	1000	4000
061045450001000	45 x 45		45,2	5,0	18,0	black	750	-
061045450002000	45 x 45		45,2	5,0	18,0	grey	750	1500
061045450003000	45 x 45		45,2	5,0	18,0	white	750	1500
061050500001000	50 x 50		50,0	5,0	19,0	black	500	-
061050500002000	50 x 50		50,0	5,0	19,0	grey	500	-
061050500003000	50 x 50		50,0	5,0	19,0	white	500	1000
061060600001000	60 x 60		60,1	4,0	19,0	black	500	-
061060600002000	60 x 60		60,1	4,0	19,0	grey	500	1500
061060600003000	60 x 60		60,1	4,0	19,0	white	500	1500
061080800001000	80 x 80	x 1,5-2,5	79,5	6,0	17,0	black	250	-
061080800002000	80 x 80	x 1,5-2,5	79,5	6,0	17,0	grey	250	750
061080800003000	80 x 80	x 1,5-2,5	79,5	6,0	17,0	white	250	750
061248480001000	48 x 48	x 2,5-4,5	47,8	5,0	14,8	black	500	-
061270700001000	70 x 70	x 2-4	70,0	5,0	19,0	black	500	-
061270700001001	70 x 70	x 2-4	70,0	5,0	19,0	black	100	500
061270700002000	70 x 70	x 2-4	70,0	5,0	19,0	grey	500	1500
061270700003000	70 x 70	x 2-4	70,0	5,0	19,0	white	500	1500

Please note that the product illustrations are exemplary images that could deviate from the ordered/delivered products.

All of the dimensions are in mm should nothing to the contrary be stated.

*PU = Packaging Unit, SW = Spanner opening, n.w. = not detachable, o. K. = excl. The head, o. B. = excl. The collar, m. R. = with the radius, MOQ = Minimum Order Quantity.

** MOQ: Parts with MOQ, set-up costs may apply.



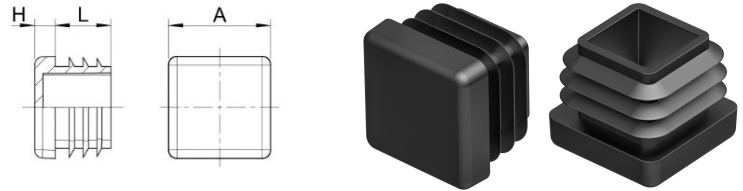
We exclusively sell to the trade and industry. Please note our minimum order quantities and the minimum order value per delivery.

We would be pleased to send you an offer that is tailored to your needs should you require special colours, deviating dimensions, bioplastics, or larger order quantities.

Inserts for square tubes

E

Application: for square tubes
Material: polyethylene
Standard-Colour: black



Order No.	Tube outside Ø	For other tube wall thickness	Head Ø	Height	Shaft length	Colour	PU*	MOQ**
			A	H	L			
061275750001000	75 x 75	x 2-4,5	74,8	6,0	21,2	black	150	-
061275750002000	75 x 75	x 2-4,5	74,8	6,0	21,2	grey	150	150
061275750003000	75 x 75	x 2-4,5	74,8	6,0	21,2	white	150	150
061290900001000	90 x 90	x 2-5	90,3	5,0	25,0	black	250	-
061290900002000	90 x 90	x 2-5	90,3	5,0	25,0	grey	250	500
061290900003000	90 x 90	x 2,5	90,3	5,0	25,0	white	250	500
061310010001000	100 x 100	x 3-6	101,1	5,0	23,0	black	100	-
061310010002000	100 x 100	x 3-6	101,1	5,0	23,0	grey	100	-
061310010003000	100 x 100	x 3-6	101,1	5,0	23,0	white	100	-
061311110001000	110 x 110	x,4 3-5	110,4	6,1	24,5	black	60	-
061311110002000	110 x 110	x,4 3-5	110,4	6,1	24,5	grey	60	-
061311110003000	110 x 110	x,4 3-5	110,4	6,1	24,5	white	60	-
061312120001000	120 x 120	x 2,5-5	120,0	5,0	25,0	black	100	-
061312120002000	120 x 120	x 2,5-5	120,0	5,0	25,0	grey	100	-
061312120003000	120 x 120	x 2,5-5	120,0	5,0	25,0	white	100	200
061313130001000	125 x 125	x 3-6	125,2	6,0	24,5	black	60	-
061313130002000	125 x 125	x 3-6	125,2	6,0	24,5	grey	60	-
061315150001000	150 x 150	x 10-12,5	149,3	7,0	27,0	black	90	-
061325250001000	25 x 25	x 3	25,0	5,0	14,0	black	5000	-
061325250001001	25 x 25	x 3	25,0	5,0	14,0	black	500	5000
061325250002000	25 x 25	x 3	25,0	5,0	14,0	grey	5000	5000
061325250003000	25 x 25	x 3	25,0	5,0	14,0	white	5000	5000
061330300001000	30 x 30	x 3	30,0	5,0	14,5	black	2500	-
061330300001001	30 x 30	x 3	30,0	5,0	14,5	black	500	-
061330300002000	30 x 30	m 1 Kante r6	30,5	5,0	13,5	grey	2500	2500
061330300003000	30 x 30	m 1 Kante r6	30,5	5,0	13,5	white	2500	2500
061335350001000	35 x 35	x 3-5	35,0	5,0	14,5	black	1250	-
061335350002000	35 x 35	x 3-5	35,0	5,0	14,5	grey	1250	-
061335350003000	35 x 35	x 3-5	35,0	5,0	14,5	white	1250	-
061340400001000	40 x 40	x 3	40,3	5,0	14,5	black	1000	-
061340400002000	40 x 40	x 3	40,3	5,0	14,5	grey	1000	4000

Please note that the product illustrations are exemplary images that could deviate from the ordered/delivered products.

All of the dimensions are in mm should nothing to the contrary be stated.

*PU = Packaging Unit, SW = Spanner opening, n.w. = not detachable, o. K. = excl. The head, o. B. = excl. The collar, m. R. = with the radius, MOQ = Minimum Order Quantity.

** MOQ: Parts with MOQ, set-up costs may apply.

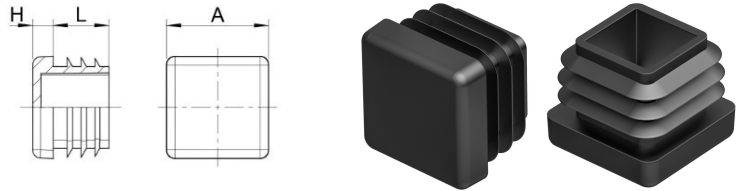
We exclusively sell to the trade and industry. Please note our minimum order quantities and the minimum order value per delivery. We would be pleased to send you an offer that is tailored to your needs should you require special colours, deviating dimensions, bioplastics, or larger order quantities.



Inserts for square tubes

Application: for square tubes
 Material: polyethylene
 Standard-Colour: black

E



Order No.	Tube outside Ø	For other tube wall thickness	Head Ø	Height	Shaft length	Colour	PU*	MOQ**
			A	H	L			
061340400003000	40 x 40	x 3	40,3	5,0	14,5	white	1000	4000
061345450001000	45 x 45	x 3-5	45,1	5,0	14,8	black	600	-
061350500001000	50 x 50	x 2,6-5	50,0	5,0	19,0	black	500	-
061350500002000						grey	500	-
061350500003000	50x50	x 2,6-5	50,0	5,0	19,0	white	500	1500
061360600001000	60x60	x 3	60,5	5,0	14,4	black	500	-
061360600002000	60x60	x 3	60,5	5,0	14,4	grey	500	1000
061360600003000	60x60	x 3	60,5	5,0	14,4	white	500	1000
061370700001000	70x70	x 3	70,0	5,0	17,0	black	50	-
061370700002000	70x70	x 3	70,0	5,0	17,0	grey	50	-
061370700003000	70x70	x 3	70,0	5,0	17,0	white	50	-
061380800001000	80x80	x 3-4	80,0	5,0	17,0	black	250	-
061380800002000	80x80	x 3-4	80,0	5,0	17,0	grey	250	750
061380800003000	80x80	x 3-4	80,0	5,0	17,0	white	250	750
061410010001000	100x100	x 1,5-3,5	101,1	5,0	18,0	black	100	-
061510010001000	100x100	x 5	101,1	5,0	18,0	black	25	-
061540400001000	40x40	x 5	40,0	5,0	14,5	black	1000	-
061540400001001	40x40	x 5	40,0	5,0	14,5	black	100	1000
061540400002000	40x40	x 5	40,0	5,0	14,5	grey	1000	1000
061540400003000	40x40	x 5	40,0	5,0	14,5	white	1000	1000
061550500001000	50x50	x 5	50,2	5,0	15,0	black	500	-
061550500002000	50x50	x 5	50,2	5,0	15,0	grey	500	1500
061550500003000	50x50	x 5	50,2	5,0	15,0	white	500	500
061560600001000	60x60	x 5	60,0	4,0	15,0	black	500	-
061560600002000	60x60	x 5	60,0	4,0	15,0	grey	500	500
061560600003000	60x60	x 5	60,0	4,0	15,0	white	500	500
061590900001000	90x90	x 5	90,2	5,0	18,0	black	25	-
061680800001000	80x80	x 4-6	80,4	6,0	21,4	black	125	-
061680800002000	80x80	x 4-6	80,4	6,0	21,4	grey	125	125

Please note that the product illustrations are exemplary images that could deviate from the ordered/delivered products.

All of the dimensions are in mm should nothing to the contrary be stated.

*PU = Packaging Unit, SW = Spanner opening, n.w. = not detachable, o. K. = excl. The head, o. B. = excl. The collar, m. R. = with the radius, MOQ = Minimum Order Quantity.

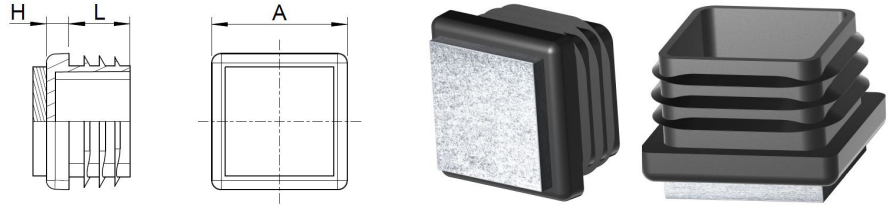
** MOQ: Parts with MOQ, set-up costs may apply.

! We exclusively sell to the trade and industry. Please note our minimum order quantities and the minimum order value per delivery. We would be pleased to send you an offer that is tailored to your needs should you require special colours, deviating dimensions, bioplastics, or larger order quantities.

Glides with felt slide base

EF

Application: for square tubes
Material: PE
Standard-Colour: black



Order No.	Tube outside \varnothing	For other tube wall thickness	Head \varnothing	Height	Shaft length	Colour	PU*	MOQ**
			A	H				
061015150001/FI	15 x 15		15,3	5,0	11,5	black	1000	4000
061016160001/FI	16 x 16		16,2	5,0	12,0	black	1000	5000
061018180001/FI	18 x 18		18,0	5,0	11,0	black	1000	4000
061020200001/FI	20 x 20		20,0	5,0	12,0	black	2500	-
061022220001/FI	22 x 22		22,2	5,0	14,0	black	500	2500
061025250001/FI	25 x 25		25,0	5,0	13,5	black	500	-
061030300001/FI	30 x 30		30,0	5,0	13,5	black	100	-
061035350001/FI	35 x 35	x 1,5-2	35,0	5,0	14,5	black	1000	2000
061040400001/FI	40 x 40		40,0	5,0	14,0	black	1000	2000
061045450001/FI	45 x 45		45,2	5,0	18,0	black	750	1500
061330300001/FI	30 x 30	x 3	30,0	5,0	14,5	black	500	2500

Please note that the product illustrations are exemplary images that could deviate from the ordered/delivered products.

All of the dimensions are in mm should nothing to the contrary be stated.

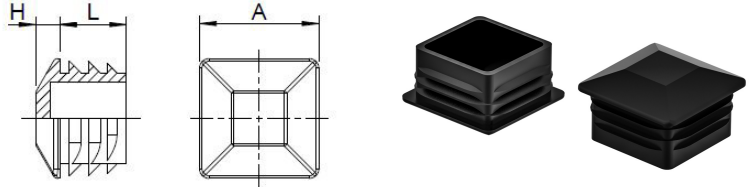
*PU = Packaging Unit, SW = Spanner opening, n.w. = not detachable, o. K. = excl. The head, o. B. = excl. The collar, m. R. = with the radius, MOQ = Minimum Order Quantity.

** MOQ: Parts with MOQ, set-up costs may apply.

We exclusively sell to the trade and industry. Please note our minimum order quantities and the minimum order value per delivery. We would be pleased to send you an offer that is tailored to your needs should you require special colours, deviating dimensions, bioplastics, or larger order quantities.

Decorative inserts

Application: for square tubes
 Additional Info: Attention! Please consider that not all glides have the same clamping ribs form
 Material: polyethylene
 Standard-Colour: black



Order No.	Tube size	Head Ø	Height	Shaft Ø	Shaft length	Dimension of ribs	Colour	PU*	MOQ**
		A	H	d	L	d1			
061420200001000	20x20	20,0	5,0	15,0	12,0	19,0	black	5000	5000
061422220001000	22 x 22	22,0	5,0	17,5	14,0	21,0	black	4000	4000
061425250001000	25 x 25	25,0	5,0	20,0	13,5	24,5	black	5000	-
061430300001000	30 x 30	30,0	5,0	24,0	13,5	29,0	black	1000	-
061435350001000	35 x 35	35,0	5,0	27,8	14,5	34,0	black	1000	2000
061440400001000	40 x 40	40,0	5,0	33,5	14,0	38,5	black	1000	2000
061450500001000	50 x 50 x 1-2	50,5	5,0	45,0	19,5	49,5	black	500	1500
061480800001000	80 x 80	80,0	6,0	71,0	17,0	79,0	black	200	600

Please note that the product illustrations are exemplary images that could deviate from the ordered/delivered products.

All of the dimensions are in mm should nothing to the contrary be stated.

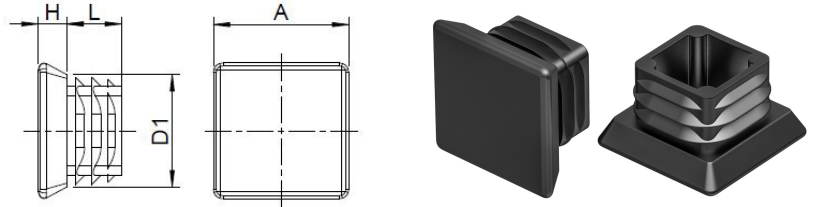
*PU = Packaging Unit, SW = Spanner opening, n.w. = not detachable, o. K. = excl. The head, o. B. = excl. The collar, m. R. = with the radius, MOQ = Minimum Order Quantity.

** MOQ: Parts with MOQ, set-up costs may apply.

We exclusively sell to the trade and industry. Please note our minimum order quantities and the minimum order value per delivery. We would be pleased to send you an offer that is tailored to your needs should you require special colours, deviating dimensions, bioplastics, or larger order quantities.

Glides with enlarged slide base

Application: for square tubes
 Additional Info: optionally available with welded felt.
 Attention! Please consider that not all glides have the same clamping ribs form
 Material: polyethylene
 Standard-Colour: black



Order No.	Tube size	Head	Head	Height	Shaft	Ribs	Shaft length	Colour	PU*	MOQ**
		A x A	d2 x d2	H	d x d	d1	L			
066025250001000	25 x 25	29,0 x 29,0	24,0 x 24,0	6,2	19,0 x 19,0	23,0 x 23,0	11,7	black	2500	2500

Please note that the product illustrations are exemplary images that could deviate from the ordered/delivered products.

All of the dimensions are in mm should nothing to the contrary be stated.

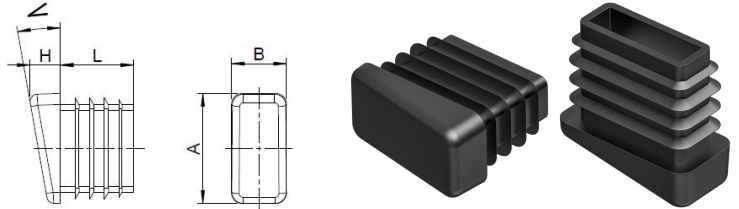
*PU = Packaging Unit, SW = Spanner opening, n.w. = not detachable, o. K. = excl. The head, o. B. = excl. The collar, m. R. = with the radius, MOQ = Minimum Order Quantity.

** MOQ: Parts with MOQ, set-up costs may apply.

We exclusively sell to the trade and industry. Please note our minimum order quantities and the minimum order value per delivery. We would be pleased to send you an offer that is tailored to your needs should you require special colours, deviating dimensions, bioplastics, or larger order quantities.

Inclined glides, base angled at 10°

Application: for rectangular and square tubes
 Additional Info: Attention! Please consider that not all glides have the same clamping ribs form
 Material: polyethylene
 Standard-Colour: black



Order No.	Tube size	Head	Height	Angle	Shaft	Ribs	Shaft length	Colour	PU*	MOQ**
		A x B	H	W	d x b	d1 x b1	L			
065018180001000	18 x 18	18,0 x 18,0	7,8	10°	12,0 x 12,0	15,6 x 15,6	20,0	black	1000	5000
065020150001000	20 x 15	20,0 x 15,0	9,3	10°	15,5 x 10,5	18,5 x 13,5	12,0	black	1000	-
065020200001000	20 x 20	20,2 x 20,2	8,0	10°	14,8 x 14,8	18,0 x 18,0	12,0	black	5000	-
065025150001000	25 x 15	24,5 x 15,5	7,0	10°	19,5 x 10,5	22,7 x 13,7	12,0	black	2500	2500
065025250001000	25x25	25,0x25,0	8,5	10°	20,0x20,0	24,0x24,0	14,0	black	2000	-
065030150001000	30 x 15	15,4 x 30,1	8,3	10°	25,8 x 10,8	28,0 x 13,0	20,0	black	1000	-
065030200001000	30 x 20	30,0 x 20,5	8,5	10°	25,5 x 15,0	29,5 x 19,5	14,5	black	1000	-

Please note that the product illustrations are exemplary images that could deviate from the ordered/delivered products.

All of the dimensions are in mm should nothing to the contrary be stated.

*PU = Packaging Unit, SW = Spanner opening, n.w. = not detachable, o. K. = excl. The head, o. B. = excl. The collar, m. R. = with the radius, MOQ = Minimum Order Quantity.

** MOQ: Parts with MOQ, set-up costs may apply.

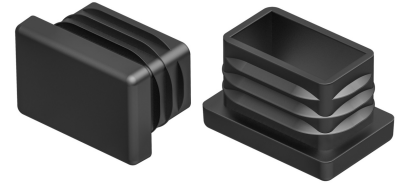
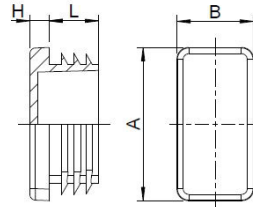
We exclusively sell to the trade and industry. Please note our minimum order quantities and the minimum order value per delivery. We would be pleased to send you an offer that is tailored to your needs should you require special colours, deviating dimensions, bioplastics, or larger order quantities.



Inserts for rectangular tubes

F

Application: for rectangular tubes
 Additional Info: optionally available with welded felt.
 Attention! Please consider that not all glides have the same clamping ribs form
 Material: polyethylene
 Standard-Colour: black



Order No.	Tube size	Head plate	Height	Shaft size	Dimension of ribs	Shaft length	Colour	PU*	MOQ**
		A x B	H	d x b	d1 x b1	L			
062010030001000	100x30x1,5-3,5	100,0x30,0	5,0	91,5x20,5	98,0x27,5	14,8	black	350	-
062010030002000	100x30x1,5-3,5	100,0x30,0	5,0	91,5x20,5	98,0x27,5	14,8	grey	350	350
062010030003000	100x30x1,5-3,5	100,0x30,0	5,0	91,5x20,5	98,0x27,5	14,8	white	350	350
062020100001000	20x10	20,0x10,0	4,9	16,5x6,5	18,4x8,8	11,7	black	5000	-
062020100001001	20x10	20,0x10,0	4,9	16,5x6,5	18,4x8,8	11,7	black	1000	5000
062020100002000	20x10	20,0x10,0	4,9	16,5x6,5	18,4x8,8	11,7	grey	5000	5000
062020100003000	20x10	20,0x10,0	4,9	16,5x6,5	18,4x8,8	11,7	white	5000	5000
062020150001000	20x15	20,1x15,0	5,0	15,5x10,7	18,9x13,9	11,3	black	4000	-
062020150001001	20x15	20,1x15,0	5,0	15,5x10,7	18,9x13,9	11,3	black	1000	4000
062020150002000	20x15	20,1x15,0	5,0	15,5x10,7	18,9x13,9	11,3	grey	4000	4000
062020150002001	20x15	10,1x15,0	5,0	15,5x10,7	18,9x13,9	11,3	grey	1000	4000
062020150003000	20x15	10,1x15,0	5,0	15,5x10,7	18,9x13,9	11,3	white	4000	4000
062025100001000	25x10	25,0x10,0	5,0	21,5x6,4	23,5x8,7	11,7	black	5000	-
062025100001001	25x10	25,0x10,0	5,0	21,5x6,4	23,5x8,7	11,7	black	1000	5000
062025100002000	25x10	25,0x10,0	5,0	21,5x6,4	23,5x8,7	11,7	grey	5000	5000
062025100003000	25x10	25,0x10,0	5,0	21,5x6,4	23,5x8,7	11,7	white	5000	5000
062025120001000	25x12	25,0x12,0	5,0	19,0x6,0	23,5x 10,5	10,5	black	3000	3000
062025150001000	25x15	25,1x15,0	4,9	19,6x10,4	23,9x14,3	11,8	black	5000	-
062025150001001	25x15	25,1x15,0	4,9	19,6x10,4	23,9x14,3	11,8	black	1000	5000
062025150002000	25x15	25,1x15,0	4,9	19,6x10,6	23,9x14,3	11,8	grey	5000	5000
062025150003000	25x15	25,1x15,0	4,9	19,6x10,6	23,9x14,3	11,8	white	5000	5000
062025200001000	25x20	25,2x20,3	4,7	20,5x15,6	24,0x19,1	14,4	black	5000	-
062025200001001	25x20	25,2x20,3	4,7	20,5x15,6	24,0x19,1	14,4	black	1000	5000
062025200002000	25x20	25,2x20,3	4,7	20,5x15,6	24,0x19,1	14,4	grey	5000	5000
062025200002001	25x20	25,2x20,3	4,7	20,5x15,6	24,0x19,1	14,4	grey	1000	5000
062025200003000	25x20	25,2x20,3	4,7	20,5x15,6	24,0x19,1	14,4	white	5000	5000
062030100001000	30x10	30,1x10,3	5,0	25,6x6,2	28,1x8,8	12,7	black	5000	-
062030100001001	30x10	30,1x10,3	5,0	25,6x6,2	28,1x8,8	12,7	black	1000	5000
062030100002000	30x10	30,1x10,3	5,0	25,6x6,2	28,1x8,8	12,7	grey	5000	5000
062030100003000	30x10	30,1x10,3	5,0	25,6x6,2	28,1x8,8	12,7	white	5000	5000
062030100003001	30x10	10,1x10,3	5,0	25,6x6,2	28,1x8,8	12,7	white	1000	5000

Please note that the product illustrations are exemplary images that could deviate from the ordered/delivered products.
 All of the dimensions are in mm should nothing to the contrary be stated.

*PU = Packaging Unit, SW = Spanner opening, n.w. = not detachable, o. K. = excl. The head, o. B. = excl. The collar, m. R. = with the radius, MOQ = Minimum Order Quantity.

** MOQ: Parts with MOQ, set-up costs may apply.

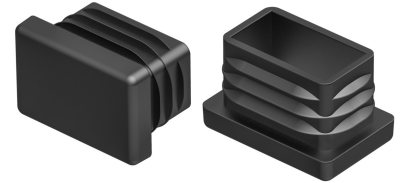
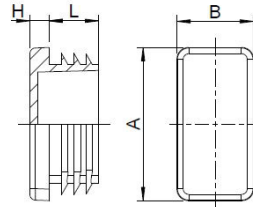
! We exclusively sell to the trade and industry. Please note our minimum order quantities and the minimum order value per delivery.
 We would be pleased to send you an offer that is tailored to your needs should you require special colours, deviating dimensions, bioplastics, or larger order quantities.



Inserts for rectangular tubes

F

Application: for rectangular tubes
Material: polyethylene
Standard-Colour: black



Order No.	Tube size	Head plate	Height	Shaft size	Dimension of ribs	Shaft length	Colour	PU*	MOQ**
		A x B	H	d x b	d1 x b1	L			
062030150001000	30x15	30,0x15,0	5,0	25,5x10,5	28,0x13,0	12,0	black	5000	-
062030150001001	30x15	30,0x15,0	5,0	25,5x10,5	28,0x13,0	12,0	black	500	-
062030150002000	30x15	30,0x15,0	5,0	25,5x10,5	28,0x13,0	12,0	grey	5000	5000
062030150002001	30x15	30,0x15,0	5,0	25,5x10,5	28,0x13,0	12,0	grey	500	5000
062030150003000	30x15	30,0x15,0	5,0	25,5x10,5	28,0x13,0	12,0	white	5000	5000
062030150003001	30x15	30,0x15,0	5,0	25,5x10,5	28,0x13,0	12,0	white	500	5000
062030200001000	30x20	30,0x20,0	5,0	25,0x14,9	28,5x18,5	14,0	black	2500	-
062030200001001	30x20	30,0x20,0	5,0	25,0x14,9	28,5x18,5	14,0	black	500	-
062030200002000	30x20	30,0x20,0	5,0	25,0x49,9	28,5x18,5	14,0	grey	2500	-
062030200002001	30x20	30,0x20,0	5,0	25,0x49,9	28,5x18,5	14,0	grey	500	2500
062030200003000	30x20	30,0x20,0	5,0	25,0x49,9	28,5x18,5	14,0	white	2500	-
062030200003001	30x20	30,0x20,0	5,0	25,0x49,9	28,5x18,5	14,0	white	500	2500
062030250001000	30x25	30,0x24,9	5,1	24,5x19,6	28,5x23,1	13,6	black	2000	-
062030250001001	30x25	30,0x24,9	5,1	24,5x19,6	28,5x23,1	13,6	black	500	2000
062030250002000	30x25	30,0x24,9	5,1	24,5x19,6	28,5x23,1	13,6	grey	2000	2000
062030250003000	30x25	30,0x24,9	5,1	24,5x19,6	28,5x23,1	13,6	white	2000	2000
062035100001000	35x10	34,9x10,0	5,1	29,5x5,0	32,0x7,4	10,1	black	5000	5000
062035100002000	35x10	34,9x10,0	5,1	29,5x5,0	32,0x7,4	10,1	grey	5000	5000
062035100003000	35x10	34,9x10,0	5,1	29,5x5,0	32,0x7,4	10,1	white	5000	5000
062035150001000	35x15	35,1x15,2	4,9	30,3x9,7	33,1x13,1	12,3	black	4000	4000
062035150001001	35x15	35,1x15,2	4,9	30,3x9,7	33,1x13,1	12,3	black	500	4000
062035150002000	35x15	35,1x15,2	4,9	30,3x9,7	33,1x13,1	12,3	grey	4000	4000
062035150003000	35x15	35,1x15,2	4,9	30,3x9,7	33,1x13,1	12,3	white	4000	4000
062035200001000	35x20	35,0x20,0	5,0	28,5x13,5	33,5x18,5	13,0	black	2500	-
062035200001001	35x20	35,0x20,0	5,0	28,5x13,5	33,5x18,5	13,0	black	500	2500
062035200002000	35x20	35,0x20,0	5,0	28,5x13,5	28,5x13,5	13,0	grey	2500	2500
062035200003000	35x20	35,0x20,0	5,0	28,5x13,5	28,5x13,5	13,0	white	2500	2500
062035250001000	35x25	35,0x25,0	4,6	29,5x20,0	33,7x24,3	13,5	black	1000	-
062035250002000	35x25	35,0x25,0	4,6	29,5x20,0	33,7x24,3	13,5	grey	1000	2000
062035250003000	35x25	35,0x25,0	4,6	29,5x20,0	33,7x24,3	13,5	white	1000	1000
062035300001000	35x30	35,7x30,5	5,0	30,1x24,9	35,2x29,5	14,5	black	1000	-

Please note that the product illustrations are exemplary images that could deviate from the ordered/delivered products.

All of the dimensions are in mm should nothing to the contrary be stated.

*PU = Packaging Unit, SW = Spanner opening, n.w. = not detachable, o. K. = excl. The head, o. B. = excl. The collar, m. R. = with the radius, MOQ = Minimum Order Quantity.

** MOQ: Parts with MOQ, set-up costs may apply.

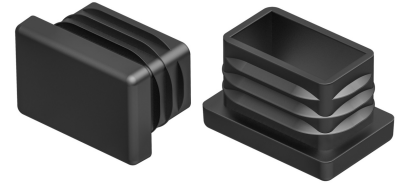
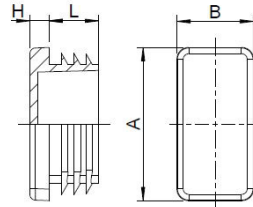
! We exclusively sell to the trade and industry. Please note our minimum order quantities and the minimum order value per delivery.
We would be pleased to send you an offer that is tailored to your needs should you require special colours, deviating dimensions, bioplastics, or larger order quantities.



Inserts for rectangular tubes

F

Application: for rectangular tubes
Material: polyethylene
Standard-Colour: black



Order No.	Tube size	Head plate	Height	Shaft size	Dimension of ribs	Shaft length	Colour	PU*	MOQ**
		A x B	H	d x b	d1 x b1	L			
062035300002000	35x30	35,7x30,5	5,0	30,1x24,9	35,2x29,5	14,5	grey	1000	2000
062040100001000	40x10	40,0x10,0	5,0	34,0x5,0	37,5x7,5	11,0	black	5000	-
062040100001001	40x10	40,0x10,0	5,0	34,0x5,0	37,5x7,5	11,0	black	1000	-
062040100002000	40x10	40,0x10,0	5,0	34,0x5,0	37,5x7,5	11,0	grey	5000	5000
062040100002001	40x10	40,0x10,0	5,0	34,5x5,0	37,5x7,5	11,0	grey	1000	5000
062040100003000	40x10	40,0x10,0	5,0	34,5x5,0	37,5x7,5	11,0	white	5000	5000
062040150001000	40x15	39,9x15,1	5,0	35,4x10,3	38,7x13,4	11,7	black	5000	-
062040150001001	40x15	39,9x15,1	5,0	35,4x10,3	38,7x13,4	11,7	black	500	-
062040150002000	40x15	39,9x15,1	5,0	35,4x10,3	38,7x13,4	11,7	grey	5000	5000
062040150002001	40x15	39,9x15,1	5,0	35,4x10,3	38,7x13,4	11,7	grey	500	5000
062040150003000	40x15	39,9x15,1	5,0	35,4x10,3	38,7x13,4	11,7	white	5000	5000
062040200001000	40x20	40,0x20,0	4,6	35,1x14,8	38,2x17,9	13,9	black	2500	-
062040200001001	40x20	40,0x20,0	4,6	35,1x14,8	38,2x17,9	13,9	black	250	-
062040200002000	40x20	40,0x20,0	4,6	35,1x14,8	38,2x17,9	13,9	grey	2500	-
062040200002001	40x20	40,0x20,0	4,6	35,1x14,8	38,2x17,9	13,9	grey	250	2500
062040200003000	40x20	40,0x20,0	4,6	35,1x14,8	38,2x17,9	13,9	white	2500	7500
062040250001000	40x25	39,8x24,8	4,8	35,3x19,3	39,1x23,1	11,7	black	2500	-
062040250001001	40x25	39,8x24,8	4,8	35,3x19,3	39,1x23,1	11,7	black	500	-
062040250002000	40x25	39,8x24,8	4,8	35,3x19,3	39,1x23,1	11,7	grey	2500	2500
062040250003000	40x25	39,8x24,8	4,8	35,3x19,3	39,1x23,1	11,7	white	2500	2500
062040300001000	40x30	40,7x30,3	4,8	35,8x25,0	40,2x29,0	14,4	black	1000	-
062040300002000	40x30	40,7x30,3	4,8	35,8x25,0	40,2x29,0	14,4	grey	1000	2000
062040300003000	40x30	40,7x30,3	4,8	35,8x25,0	40,2x29,0	14,4	white	1000	-
062040350001000	40x35x1-3	39,9x34,8	5,0	27,2x32,3	38,8x33,8	11,5	black	1000	-
062040350002000	40x35x1,3	39,9x34,8	5,0	27,2x32,3	38,8x33,8	11,5	grey	1000	1000
062040350003000	40x35x1,3	39,9x34,8	5,0	27,2x32,3	38x8x33,8	11,5	white	1000	1000
062045150001000	45x15	44,4x15,1	4,8	40,2x10,4	43,4x14,0	11,1	black	4000	4000
062045150001001	45x15	44,4x15,1	4,8	40,2x10,4	43,4x14,0	11,1	black	500	4000
062045150002000	45x15	44,4x15,1	4,8	40,2x10,4	43,4x14,0	11,1	grey	4000	4000
062045150003000	45x15	44,4x15,1	4,8	40,2x10,4	43,4x14,0	11,1	white	4000	4000
062045200001000	45x20	45,0x20,0	5,0	38,0x17,8	43,7x22,5	12,7	black	1750	-

Please note that the product illustrations are exemplary images that could deviate from the ordered/delivered products.
All of the dimensions are in mm should nothing to the contrary be stated.

*PU = Packaging Unit, SW = Spanner opening, n.w. = not detachable, o. K. = excl. The head, o. B. = excl. The collar, m. R. = with the radius, MOQ = Minimum Order Quantity.

** MOQ: Parts with MOQ, set-up costs may apply.



We exclusively sell to the trade and industry. Please note our minimum order quantities and the minimum order value per delivery.

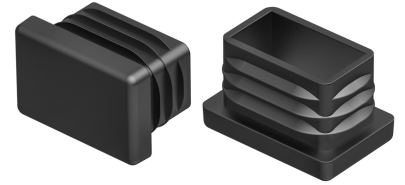
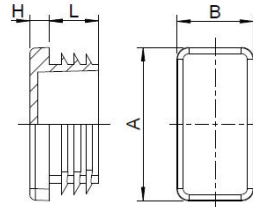
We would be pleased to send you an offer that is tailored to your needs should you require special colours, deviating dimensions, bioplastics, or larger order quantities.



Inserts for rectangular tubes

F

Application: for rectangular tubes
Material: polyethylene
Standard-Colour: black



Order No.	Tube size	Head plate	Height	Shaft size	Dimension of ribs	Shaft length	Colour	PU*	MOQ**
		A x B	H	d x b	d1 x b1	L			
062045200002000	45x20	45,0x20,0	5,0	38,0x17,8	43,7x22,5	12,7	grey	1750	1750
062045200003000	45x20	45,0x20,0	5,0	38,0x17,8	43,7x22,5	12,7	white	1750	1750
062045250001000	45x25	45,2x25,6	5,0	38,3x18,0	43,3x22,6	12,5	black	1000	-
062045250002000	45x25	45,2x25,6	5,0	38,3x18,0	43,3x22,6	12,5	grey	1000	1000
062045250003000							white	1000	1000
062045350001000							black	1000	-
062045350002000	45x35	44,9x43,7	4,9	37,0x27,0	43,5x33,6	11,5	grey	1000	1000
062045400001000	45x40x2-3	45,5x40,5	5,2	38,1x33,1	41,7x36,6	12,5	black	1000	-
062048380001000	48x38	46,7x37,6	4,9	41,3x32,8	44,9x37,1	14,3	black	1000	1000
062048380003000	48x38	46,7x37,6	4,9	41,3x32,8	44,9x37,1	14,3	white	1000	1000
062050150001000	50x15	50,1x15,1	4,7	45,0x10,3	49,6x13,4	13,6	black	1000	-
062050150002000	50x15	50,1x15,1	4,7	45,0x10,3	49,6x13,4	13,6	grey	1000	2000
062050150003000	50x15	50,1x15,1	4,7	45,0x10,3	49,6x13,4	13,6	white	1000	2000
062050200001000	50x20	50,2x20,3	4,8	45,0x14,8	49,5x19,0	13,6	black	1000	-
062050200002000	50x20	50,2x20,3	4,8	45,0x14,8	49,5x19,0	13,6	grey	1000	-
062050200003000	50x20	50,2x20,3	4,8	45,0x14,8	49,5x19,0	13,6	white	1000	2000
062050250001000	50x25	50,3x25,4	5,3	44,9x18,9	49,3x23,4	12,2	black	1000	-
062050250002000	50x25	50,3x25,4	5,3	44,9x18,9	49,3x23,4	12,2	grey	1000	-
062050250003000	50x25	50,3x25,4	5,3	44,9x18,9	49,3x23,4	12,2	white	1000	-
062050300001000	50x30	50,1x30,1	4,6	44,8x24,6	49,0x29,1	13,6	black	1000	-
062050300002000	50x30	50,1x30,1	4,6	44,8x24,6	49,0x29,1	13,6	grey	1000	-
062050300003000	50x30	50,1x30,1	4,6	44,8x26,6	49,0x29,1	13,6	white	1000	4000
062050340001000	50x34x1-3,5	49,8x33,8	5,0	41,2x24,3	48,8x32,2	14,5	black	750	-
062050340003000	50x34x1-3,5	49,8x33,8	5,0	41,2x24,3	48,8x32,2	14,5	white	750	750
062050350001000	50x35x1-3,5	49,8x34,8	5,0	41,0x26,0	48,5x33,6	14,5	black	750	-
062050350002000	50x35x1-3,5	49,8x34,8	5,0	41,0x26,0	48,5x33,6	14,5	grey	750	750
062050350003000	50x35x1-3,5	49,8x34,8	5,0	41,0x26,0	48,5x33,6	14,5	white	750	750
062050400001000	50x40	50,0x40,1	5,3	42,8x32,8	47,5x38,0	12,0	black	1000	-
062050400002000	50x40	50,0x40,0	5,3	42,8x32,8	47,5x38,0	12,0	grey	1000	2000
062050400003000	50x40	50,0x40,0	5,3	42,8x32,8	47,5x38,0	12,0	white	1000	2000
062055350001000	55x35	54,6x35,3	4,5	47,6x29,2	51,3x32,1	13,2	black	1000	1000

Please note that the product illustrations are exemplary images that could deviate from the ordered/delivered products.

All of the dimensions are in mm should nothing to the contrary be stated.

*PU = Packaging Unit, SW = Spanner opening, n.w. = not detachable, o. K. = excl. The head, o. B. = excl. The collar, m. R. = with the radius, MOQ = Minimum Order Quantity.

** MOQ: Parts with MOQ, set-up costs may apply.



We exclusively sell to the trade and industry. Please note our minimum order quantities and the minimum order value per delivery.

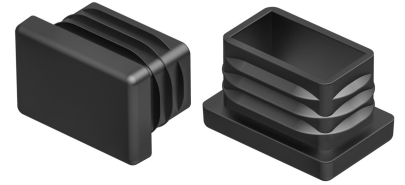
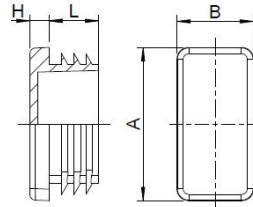
We would be pleased to send you an offer that is tailored to your needs should you require special colours, deviating dimensions, bioplastics, or larger order quantities.



Inserts for rectangular tubes

F

Application: for rectangular tubes
Material: polyethylene
Standard-Colour: black



Order No.	Tube size	Head plate	Height	Shaft size	Dimension of ribs	Shaft length	Colour	PU*	MOQ**
		A x B	H	d x b	d1 x b1	L			
062055350002000	55x35	54,6x35,3	4,5	47,6x29,2	51,3x32,1	13,2	grey	1000	1000
062055350003000	55x35	54,6x35,3	4,5	47,6x29,2	51,3x32,1	13,2	white	1000	1000
062055400001000	55x40x1,5-4	54,8x39,7	5,0	45,4x29,4	53,0x37,6	14,5	black	600	-
062055400003000	55x40x1,5-4	54,8x39,7	5,0	45,4x29,4	53,0x37,6	14,5	white	600	600
062060200001000	60x20	59,7x20,0	4,9	53,5x14,2	57,6x18,0	14,2	black	1000	-
062060200002000	60x20	59,7x20,0	4,9	53,3x14,2	57,6x18,0	14,2	grey	1000	2000
062060200003000	60x20	59,7x20,0	4,9	53,3x14,2	57,6x18,0	14,2	white	1000	2000
062060250001000	60x25x1-2,5	59,8x24,6	4,9	51,3x16,2	58,1x23,7	14,1	black	750	-
062060250002000	60x25	50,3x25,4	5,3	44,9x18,9	49,3x23,4	12,2	grey	750	750
062060250003000	60x25	50,3x25,4	5,3	44,9x18,9	49,3x23,4	12,2	white	750	750
062060300001000	60x30	60,3x30,4	5,0	53,5x24,3	57,6x27,7	13,7	black	500	-
062060300002000	60x30	60,3x30,4	5,0	35,5x24,3	57,6x27,7	13,7	grey	500	-
062060300003000	60x30	60,3x30,4	5,0	35,5x24,3	57,6x27,7	13,7	white	500	-
062060330001000	60x33x1,5-3,5	59,6x32,8	5,0	50,6x23,4	58,0x31,2	14,5	black	650	-
062060350001000	60x35x1,5-3,5	59,9x34,6	5,0	51,4x25,0	58,2x32,0	14,5	black	500	-
062060400001000	60x40	60,0x40,0	5,0	52,8x32,3	58,7x38,4	14,0	black	1000	-
062060400001001	60x40	60,0x40,0	5,0	52,8x32,3	58,7x38,4	14,0	black	100	-
062060400002000	60x40	60,0x40,0	5,0	52,8x32,3	58,7x38,4	14,0	grey	1000	-
062060400003000	60x40	60,0x40,0	5,0	52,8x32,3	58,7x38,4	14,0	white	1000	2000
062060450001000	60x45x1,5-4	60,1x45,0	5,0	50,8x34,5	58,3x42,3	14,9	black	450	-
062060450002000	60x45x1,5-4	60,1x45,0	5,0	50,8x34,5	58,3x42,3	14,9	grey	450	450
062060450003000	60x45x1,5-4	60,1x45,0	5,0	50,8x34,5	58,3x42,3	14,9	white	450	450
062065350001000	65x35x1,5-3,5	65,0x35,0	5,0	56,5x26,4	63,9x33,2	15,0	black	500	-
062065350003000	60x35x1,5-3,5	65,0x35,0	5,0	56,5x26,4	63,9x33,2	15,0	white	500	500
062070200001000	70x20	70,3x19,9	5,1	61,8x12,9	67,9x18,5	19,5	black	500	-
062070200002000	70x20	70,3x19,9	5,1	61,8x12,9	67,9x18,5	19,5	grey	500	1500
062070200003000	70x20	70,3x19,9	5,1	61,8x12,9	67,9x18,5	19,5	white	500	1500
062070250001000	70x25	70,2x25,4	5,1	62,2x17,2	67,9x23,1	17,0	black	500	-
062070250002000	70x25x1-3	75,0x25,0	5,0	67,5x16,5	74,4x23,5	14,5	grey	1000	-
062070250003000	70x25x1-3	75,0x25,0	5,0	67,5x16,5	74,4x23,5	14,5	white	1000	1000
062070300001000	70x30	70,3x30,2	5,9	61,7x22,5	68,0x28,2	18,0	black	500	-

Please note that the product illustrations are exemplary images that could deviate from the ordered/delivered products.

All of the dimensions are in mm should nothing to the contrary be stated.

*PU = Packaging Unit, SW = Spanner opening, n.w. = not detachable, o. K. = excl. The head, o. B. = excl. The collar, m. R. = with the radius, MOQ = Minimum Order Quantity.

** MOQ: Parts with MOQ, set-up costs may apply.



We exclusively sell to the trade and industry. Please note our minimum order quantities and the minimum order value per delivery.

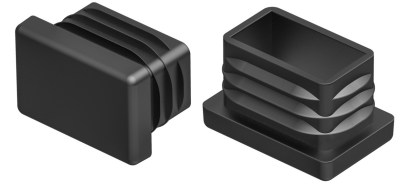
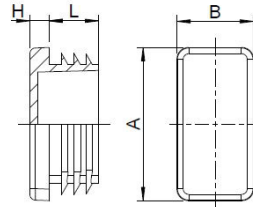
We would be pleased to send you an offer that is tailored to your needs should you require special colours, deviating dimensions, bioplastics, or larger order quantities.



Inserts for rectangular tubes

F

Application: for rectangular tubes
Material: polyethylene
Standard-Colour: black



Order No.	Tube size	Head plate	Height	Shaft size	Dimension of ribs	Shaft length	Colour	PU*	MOQ**
		A x B	H	d x b	d1 x b1	L			
062070300002000	70x30	70,3x30,2	5,9	61,7x22,5	68,0x28,2	18,0	grey	1000	-
062070300003000	70x30	70,3x30,2	5,9	61,7x22,5	68,0x28,2	18,0	white	1000	1000
062070350001000	70x35x1,5-3, 5	69,7x34,7	5,0	60,5x25	67,3x32,1	14,2	black	500	-
062070350002000	70x35x1,5-3, 5	69,7x34,7	5,0	60,5x25	67,3x32,1	14,2	grey	500	500
062070400001000	70x40	70,9x39,8	5,7	61,4x32,3	67,6x37,5	17,7	black	500	-
062070400002000	70x40	70,9x39,8	5,7	61,4x32,3	67,6x37,5	17,7	grey	500	500
062070400003000	70x40	70,9x39,8	5,7	61,4x23,3	67,6x37,5	17,7	white	500	500
062075250001000	75x25x1-3	75,0x25,0	5,0	67,5x16,5	74,4x23,5	14,5	black	600	-
062075500001000	75x50x0,8-2, 5	74,5x49,5	5,0	65,5x40,0	72,2x47,5	15,0	black	300	-
062080200001000	80x20x1-2	80,5x20,3	5,0	74,0x13,0	78,1x18,2	18,2	black	500	-
062080200002000	80x20x1-2	80,5x20,3	5,0	74,0x13,0	78,1x18,2	18,2	grey	500	-
062080200003000	80x20x1-2	80,5x20,3	5,0	74,0x13,0	78,1x18,2	18,2	white	500	1000
062080250001000	80x25x1,5-3	80,4x25,3	5,0	74,0x18,7	79,0x23,0	18,0	black	500	500
062080250002000	80x25x1,5-3	80,4x25,3	5,0	74,0x18,7	79,0x23,0	18,0	grey	1000	1000
062080300001000	80x30x1-2	80,8x30,2	5,6	71,8x22,4	78,1x28,2	17,8	black	500	-
062080300002000	80x30x1-2	80,8x30,2	5,6	71,8x22,4	78,1x28,2	17,8	grey	1000	-
062080300003000	80x30x1-2	80,8x30,2	5,6	71,8x22,4	78,1x28,2	17,8	white	1000	1000
062080400001000	80x40x1,5-2, 5	80,0x40,2	5,0	70,1x33,0	77,3x37,8	18,4	black	500	-
062080400002000	80x40x1,5-2, 5	80,0x40,2	5,0	70,1x33,0	77,3x37,8	18,4	grey	500	1000
062080400003000	80x40x1,5-2, 5	80,0x40,2	5,0	70,1x33,0	77,3x37,8	18,4	white	500	1000
062120250001000	100x25x1,5-3	99,6x24,7	4,7	90,8x14,6	98,1x22,7	14,4	black	450	-
062120250002000	100x25x1,5-3	99,6x24,7	4,7	90,8x14,6	98,1x22,7	14,4	grey	450	450
062120250003000	100x25x1,5-3	99,6x24,7	4,7	90,8x14,6	98,1x22,7	14,4	white	450	450
062120300001000	120x30x1-2	122,7x30,6	4,7	114,9x22,2	119,8x26,5	20,1	black	250	-
062120300002000	120x30x1-2	122,7x30,6	4,7	114,9x22,2	119,8x26,5	20,1	grey	250	250
062160300001000	60x30x1-3	60,0x30,0	5,0	52,0x21,0	59,0x28,0	14,5	black	700	-
062160300002000	60x30x1-3	60,0x30,0	5,0	52,0x21,0	59,2x28,0	14,5	trafficgrey	700	-
062160300003000	60x30x1-3	60,0x30,0	5,0	52,0x21,1	59,2x28,0	14,5	white	700	700
062210040001000	100x40x1,5-2	100,4x40,4	5,0	93,7x32,7	98,7x38,5	18,6	black	150	-
062210040002000	100x40x1,5-2	100,4x40,4	5,0	93,7x32,7	98,7x38,5	18,6	grey	300	600
062210040003000	100x40x1,5-2	100,4x40,4	5,0	93,7x32,7	98,7x38,5	18,6	white	300	600

Please note that the product illustrations are exemplary images that could deviate from the ordered/delivered products.

All of the dimensions are in mm should nothing to the contrary be stated.

*PU = Packaging Unit, SW = Spanner opening, n.w. = not detachable, o. K. = excl. The head, o. B. = excl. The collar, m. R. = with the radius, MOQ = Minimum Order Quantity.

** MOQ: Parts with MOQ, set-up costs may apply.

! We exclusively sell to the trade and industry. Please note our minimum order quantities and the minimum order value per delivery.

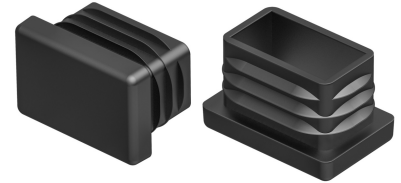
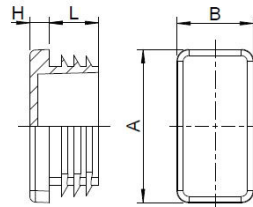
We would be pleased to send you an offer that is tailored to your needs should you require special colours, deviating dimensions, bioplastics, or larger order quantities.



Inserts for rectangular tubes

F

Application: for rectangular tubes
Material: polyethylene
Standard-Colour: black



Order No.	Tube size	Head plate	Height	Shaft size	Dimension of ribs	Shaft length	Colour	PU*	MOQ**
		A x B	H	d x b	d1 x b1	L			
062210050001000	100x50x2-3	100,2x50,2	5,0	92,0x42,2	96,7x46,7	24,2	black	250	-
062210050002000	100x50x2-3	100,2x50,2	5,0	92,0x42,2	96,7x46,7	24,2	grey	250	500
062210050003000	100x50x2-3	100,2x50,2	5,0	92,0x42,2	96,7x46,7	42,2	white	250	500
062211030001000	110x30x2-4	109,7x29,9	5,0	99,7x19,0	107,0x27,3	14,5	black	325	-
062211030002000	110x30x2-4	109,7x29,9	5,0	99,7x19,0	107,0x27,3	14,5	grey	325	325
062212060001000	120x60x2-3	120,5x60,1	5,0	111,2x52,2	117,2x57,0	24,2	black	250	-
062212060002000	120x60x2-3	120,5x60,1	5,0	111,2x52,2	117,2x57,0	24,2	grey	250	500
062212060003000	120x60x2-3	120,5x60,1	5,0	111,2x52,2	117,2x57,0	24,0	white	250	500
062212080001000	120x80x2-3	120,4x80,2	5,0	111,8x71,6	116,7x76,2	24,5	black	100	-
062212080002000	120x80x2-3	120,4x80,2	5,0	111,8x71,6	116,7x76,2	24,5	grey	100	300
062212080003000	120x80x2-3	120,4x80,2	5,0	111,8x71,6	116,7x76,2	24,5	white	100	300
062215030001000	150x30x1,5-3	150,0x30,0	6,0	138,7x15,5	150,5x26,5	21,5	black	175	-
062215030003000	150x30x1,5-3	150,0x30,0	6,0	138,7x15,5	150,5x26,5	21,5	white	175	175
062215050001000	150x50x2-4	149,8x49,8	6,0	132,7x31,3	148,2x47,0	27,4	black	200	-
062215050002000	150x50x2-4	149,8x49,8	6,0	132,7x31,3	148,2x47,0	27,4	grey	200	200
062215050003000	150x50x2-4	149,8x49,8	6,0	132,7x31,3	148,2x47,0	27,4	white	200	200
0622260300001000	60x30x3-5	60,0x30,0	5,0	48,0x17,0	54,8x24,8	14,5	black	750	-
0622260300002000	60x30x3,5	60,0x30,0	5,0	48,0x17,0	54,8x24,8	14,5	grey	750	750
0622260300003000	60x30x3,5	60,0x30,0	5,0	48,0x17,0	54,8x24,8	14,5	white	750	750
062270500001000	70x50x2-4	70,0x50,0	5,0	60,4x39,4	67,1x47,3	14,5	black	350	-
062270500002000	70x50x2-4	70,0x50,0	5,0	60,4x39,4	67,1x47,3	14,5	grey	350	350
062270500003000	70x50x2-4	70,0x50,0	5,0	60,4x39,4	67,1x47,3	14,5	white	350	350
062280500001000	80x50x2-4	79,8x49,7	4,9	67,6x38,9	76,5x46,4	18,2-18,4	black	500	-
062280500002000	80x50x2-4	79,8x49,7	4,9	67,6x38,9	76,5x46,4	18,2-18,4	grey	500	1000
062280500003000	80x50x2-4	79,8x49,7	4,9	67,6x38,9	76,5x46,4	18,2-18,4	white	500	1000
062290500001000	90x50x2-4,5	89,9x49,9	6,0	76,0x36,0	86,7x46,8	21,5	black	200	-
062290500002000	90x50x2-4,5	89,9x49,9	6,0	76,0x36,0	86,7x46,8	21,5	grey	200	200
062310040001000	100x40x3-4	100,0x40,2	5,0	89,0x29,9	93,5x35,5	18,0	black	500	-
062310040001001	100x40x3-4	100,0x40,2	5,0	89,0x29,9	93,5x35,5	18,0	black	50	500
062310040002000	100x40x3-4	100,0x40,2	5,0	89,0x29,9	93,5x35,5	18,0	grey	500	500
062310040002001	100x40x3-4	100,0x4,2	5,0	89,0x29,9	93,5x35,5	18,0	grey	50	500

Please note that the product illustrations are exemplary images that could deviate from the ordered/delivered products.

All of the dimensions are in mm should nothing to the contrary be stated.

*PU = Packaging Unit, SW = Spanner opening, n.w. = not detachable, o. K. = excl. The head, o. B. = excl. The collar, m. R. = with the radius, MOQ = Minimum Order Quantity.

** MOQ: Parts with MOQ, set-up costs may apply.



We exclusively sell to the trade and industry. Please note our minimum order quantities and the minimum order value per delivery.

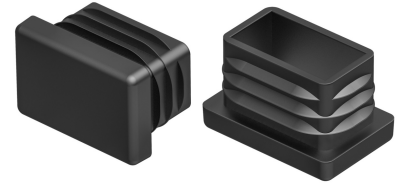
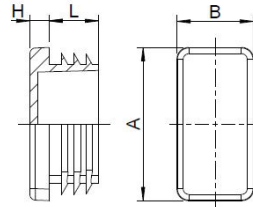
We would be pleased to send you an offer that is tailored to your needs should you require special colours, deviating dimensions, bioplastics, or larger order quantities.



Inserts for rectangular tubes

F

Application: for rectangular tubes
Material: polyethylene
Standard-Colour: black



Order No.	Tube size	Head plate	Height	Shaft size	Dimension of ribs	Shaft length	Colour	PU*	MOQ**
		A x B	H	d x b	d1 x b1	L			
062310040003000	100x40x3-4	100,0x4,2	5,0	89,0x29,9	93,5x35,5	18,0	white	500	500
062310060001000	100x60x2,5-4 ,5	99,7x59,9	6,2	88,7x48,9	97,8x57,4	24,9	black	125	-
062310060002000	100x60x2,5-4 ,5	99,7x59,9	6,2	88,7x48,9	97,2x57,4	24,9	grey	125	125
062310060003000	100x60x2,5-4 ,5	99,7x59,9	6,2	88,7x48,9	97,2x57,4	24,9	white	125	125
062310080001000	100x80x3-5,5	100,6x80,4	6,0	85,5x65,5	96,0x75,9	24,5	black	100	-
062310080002000	100x80x3-5,5	100,6x80,4	6,0	85,5x65,5	96,0x75,9	24,5	grey	100	100
062310080003000	100x80x3-5,5	100,6x80,4	6,0	85,5x65,5	96,0x75,9	24,5	white	100	100
062311070001000	110x70x3-5	110,0x69,8	6,0	94,0x53,2	105,0x94,0	24,5	black	100	-
062312040001000	120x40x3	120,5x40,3	5,2	112,5x30,7	115,0x35,8	17,0	black	250	-
062312040002000	120x40x3	120,5x40,3	5,2	112,5x30,7	115,0x35,8	17,0	grey	250	500
062312040003000	120x40x3	120,5x40,3	5,2	112,5x30,7	115,0x35,8	17,0	white	250	500
062312050001000	120x50x3-5,5	119,4x49,8	6,0	104,0x34,0	114,5x44,5	21,7	black	150	-
062312050002000	120x50x3-5,5	119,4x49,8	6,0	104,0x34,0	114,5x44,5	21,7	grey	150	150
062312050003000	120x50x3-5,5	119,4x49,8	6,0	104,0x34,0	114,5x44,5	21,7	white	150	150
062312060001000	120x60x3	121,3x61,0	5,1	110,4x49,3	112,1x52,1	18,7	black	25	-
062312060003000	120x60x3	121,3x61,0	5,1	110,4x49,3	112,1x52,1	18,7	white	25	50
062312070001000	125x75x2-5	125,5x75,2	6,0	111,4x60,6	123,3x72,0	24,5	black	75	-
062312080001000	120x80x2-5,5	119,6x79,7	6,0	106,6x65,6	117,4x77,0	24,5	black	75	-
062312080002000	120x80x2-5,5	119,6x79,7	6,0	106,6x65,6	117,4x77,0	24,5	grey	75	-
062312100001000	120x100x3,5- 6	120,5x100,3	6,0	103,8x84,2	114,3x 94,1	24,0	black	60	-
062312100002000	120x100x3,5- 6	120,5x100,3	6,0	103,8x84,2	114,3x94,1	24,0	grey	60	60
062330200001000	30x20x3	30,0x20,1	4,8	23,4x13,6	27,7x17,9	13,5	black	1000	1000
062330200002000	30x20x3	30,0x20,1	4,8	23,4x13,6	27,7x17,9	13,5	grey	1000	1000
062330200003000	30x20x3	30,0x20,1	4,8	23,4x13,6	27,7x17,9	13,5	white	1000	1000
062330250001000	30x25x0,8-3	29,9 x 24,8	5,0	22,0 x 17,1	29,0 x 24,0	11,5	black	2000	-
062340200001000	40x20x3	40,0x20,0	5,0	31,0x11,0	37,0x17,0	13,0	black	1000	-
062340200002000	40x20x3	40,0x20,0	5,0	31,0x11,0	37,0x17,0	13,0	grey	1000	-
062340200003000	40x20x3	40,0x20,0	5,0	31,0x11,0	37,0x17,0	13,0	white	1000	2000
062340300001000	40x30x3	40,0x30,0	5,0	31,5x21,5	37,0x27,0	13,0	black	2000	-
062340300001001	40x30x3	40,0x30,0	5,0	31,5x21,5	37,0x27,0	13,0	black	250	-
062340300002000	40x30x3	40,0x30,0	5,0	31,5x21,5	37,5x27,0	13,0	grey	2000	-

Please note that the product illustrations are exemplary images that could deviate from the ordered/delivered products.

All of the dimensions are in mm should nothing to the contrary be stated.

*PU = Packaging Unit, SW = Spanner opening, n.w. = not detachable, o. K. = excl. The head, o. B. = excl. The collar, m. R. = with the radius, MOQ = Minimum Order Quantity.

** MOQ: Parts with MOQ, set-up costs may apply.

! We exclusively sell to the trade and industry. Please note our minimum order quantities and the minimum order value per delivery.

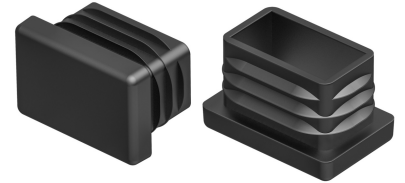
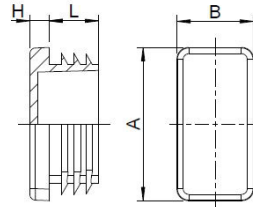
We would be pleased to send you an offer that is tailored to your needs should you require special colours, deviating dimensions, bioplastics, or larger order quantities.



Inserts for rectangular tubes

F

Application: for rectangular tubes
Material: polyethylene
Standard-Colour: black



Order No.	Tube size	Head plate	Height	Shaft size	Dimension of ribs	Shaft length	Colour	PU*	MOQ**
		A x B	H	d x b	d1 x b1	L			
062340300003000	40x30x3	40,0x30,0	5,0	31,5x21,5	37,5x27,0	13,0	white	2000	2000
062350200001000	50x20x3	50,2x20,3	4,8	42,0x12,0	45,0x15,0	13,6	black	500	1500
062350200002000	50x20x3	50,2x20,3	4,8	42,0x12,0	45,0x15,0	13,6	grey	500	1500
062350300001000	50x30x3	50,7x30,4	4,9	42,5x22,2	47,2x26,9	13,9	black	1000	-
062350300002000	50x30x3	50,7x30,4	4,9	42,5x22,2	47,2x26,9	13,9	grey	1000	-
062350300003000	50x30x3	50,7x30,4	4,9	42,5x22,2	47,2x26,9	13,9	white	1000	1000
062350400001000	50x40x3-4	50,0x40,8	5,0	40,3x30,3	43,7x34,1	14,7	black	1000	-
062350400002000	50x40x3	50,0x40,8	5,0	43,3x30,3	43,7x34,1	14,7	grey	1000	2000
062360300001000	60x30x3	60,3x30,1	5,4	52,1x22,0	55,8x25,9	14,5	black	100	-
062360300002000	60x30x3	60,3x30,1	5,4	52,1x22,0	55,8x25,9	14,9	grey	100	-
062360300003000	60x30x3	60,3x30,1	5,4	52,1x22,0	55,8x25,9	14,9	white	100	-
062360400001000	60x40x1-3	60,0x40,0	4,8	53,5x32,5	58,9x37,7	14,0	black	500	-
062360400002000	60x40x1-3	60,0x40,0	4,8	53,5x32,5	58,9x37,7	14,0	trafficgrey	500	500
062360400003000	60x40x1-3	60,0x40,0	4,8	53,5x32,5	58,9x37,7	14,0	white	500	500
062360500001000	60x50x1,5-3, 5	60,1x50,0	5,0	51,2x41,0	58,2x47,9	14,5	black	400	-
062360500002000	60x50x1,5-3, 5	60,1x50,0	5,0	51,2x41,0	58,2x47,9	14,5	grey	400	400
062380300001000	80x30x2,5	80,8x30,2	5,6	69,0x29,0	77,0x27,0	17,8	black	500	-
062380300002000	80x30x2,5	80,8x30,2	5,6	69,0x29,0	77,0x27,0	17,8	grey	500	500
062380300003000	80x30x2,5	80,8x30,2	5,6	69,0x29,0	77,0x27,0	17,8	white	500	500
062380400001000	80x40x1-3	80,7x40,4	4,8	72,5x32,0	79,3x38,6	14,5	black	350	-
062380400002000	80x40x1-3	80,7x40,4	4,8	72,5x32,0	79,3x38,6	14,5	grey	350	350
062380400003000	80x40x1-3	80,7x40,4	4,8	72,5x32,0	79,3x38,6	14,5	white	350	350
062380600001000	80x60x1,5-3, 5	79,6x59,7	4,9	69,1x49,0	78,0x57,2	24,2	black	150	-
062380600002000	80x60x1,5-3, 5	79,6x59,7	4,9	69,1x49,0	78,0x57,2	24,2	grey	150	150
062380600003000	80x60x1,5-3, 5	79,6x59,7	4,9	69,1x49,0	78,0x57,2	24,2	white	150	150
062390700001000	90x70x3-5,5	90,3x69,7	6,0	74,0x53,0	84,9x63,9	21,5	black	125	-
062410050001000	100x50x3,2-5	99,3x49,5	6,3	82,6x33,1	94,1x44,5	23,6	black	400	-
062410050002000	100x50x3,2-5	99,3x49,5	6,3	82,6x33,1	94,1x44,5	23,6	grey	400	-
062410050003000	100x50x3,2-5	99,3x49,5	6,3	82,6x33,1	94,1x44,5	23,6	white	400	400
062411060001000	110x60x3,5-5, 5	110,0x60,0	6,0	94,0x41,8	104,1x52,6	24,5	black	125	-
062411060002000	110x60x3,5-5, 5	110,0x60,0	6,0	94,0x41,8	104,1x52,6	24,5	grey	125	125

Please note that the product illustrations are exemplary images that could deviate from the ordered/delivered products.
All of the dimensions are in mm should nothing to the contrary be stated.

*PU = Packaging Unit, SW = Spanner opening, n.w. = not detachable, o. K. = excl. The head, o. B. = excl. The collar, m. R. = with the radius, MOQ = Minimum Order Quantity.

** MOQ: Parts with MOQ, set-up costs may apply.

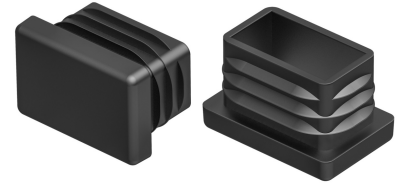
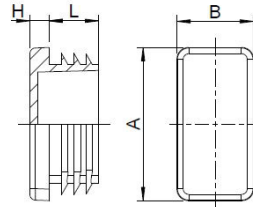
! We exclusively sell to the trade and industry. Please note our minimum order quantities and the minimum order value per delivery.
We would be pleased to send you an offer that is tailored to your needs should you require special colours, deviating dimensions, bioplastics, or larger order quantities.



Inserts for rectangular tubes

F

Application: for rectangular tubes
Material: polyethylene
Standard-Colour: black



Order No.	Tube size	Head plate	Height	Shaft size	Dimension of ribs	Shaft length	Colour	PU*	MOQ**
		A x B	H	d x b	d1 x b1	L			
062411060003000	110x60x3,5-5,5	110,0x60,0	6,0	94,0x41,8	104,1x52,6	24,5	white	125	125
062412060001000	120x60x4	120,5x60,4	5,2	110,0x50,4	115,0x55,2	18,0	black	25	-
062412060002000	120x60x4	120,5x60,4	5,2	110,0x50,4	115,0x55,2	18,0	grey	25	-
062412060003000	120x60x4	120,5x60,4	5,2	110,0x50,4	115,0x55,2	18,0	white	25	300
062414080001000	140x80x4	140,2x80,3	5,6	129,5x69,6	134,2x 74,3	19,2	black	25	-
062414080002000	140x80x4	140,2x80,3	5,6	129,5x69,6	134,2x74,3	19,2	grey	25	25
062414080003000	140x80x4	140,2x80,3	5,6	129,5x69,6	134,2x74,3	19,2	white	25	25
062415050001000	150x50x4-7	150,0x50,0	6,0	133,3x30,3	145,5x41,3	21,5	black	100	-
062415050002000	150x50x4-7	150,0x50,0	6,0	133,3x30,3	145,5x41,3	21,5	grey	100	-
062415060001000	150x60x2,5-5	150,0x60,0	6,0	135,8x44,7	146,4x54,5	21,5	black	90	-
062415060002000	150x60x2,5-5	150,0x60,0	6,0	135,8x44,7	146,4x54,5	21,5	grey	90	-
062415060003000	150x60x2,5-5	150,0x60,0	6,0	135,8x44,7	146,4x54,5	21,5	white	90	90
062415070001000	150x75x2,5-5,5	150,0x75,0	6,0	135,5x59,5	146,1x70,1	21,5	black	75	-
062416050001000	160x50x2,5-5,5	160,0x50,0	6,0	145,3x33,1	156,2x44,0	21,5	black	100	-
062416060001000	160x60x2,5-5	160,0x60,0	6,0	145,4x43,4	156,5x54,1	21,5	black	80	-
062416060003000	160x60x2,5-5	160,0x60,0	6,0	145,4x43,4	156,5x54,1	21,5	white	80	80
062416080001000	160x80x3-5,5	160,0x80,0	6,0	146,1x63,8	156,8x75,0	24,5	black	50	-
062416080002000	160x80x3-5,5	160,0x80,0	6,0	146,1x63,8	156,8x75,0	24,5	grey	50	-
062416080003000	160x80x3-5,5	160,0x80,0	6,0	146,1x63,8	156,8x75,0	24,5	white	50	50
062450300001000	50x30x3-5	49,8 x 29,9	5,0	37,9 x 17,9	44,7 x 25,0	14,5	black	800	-
062450300002000	50x30x3-5	49,8x29,9	5,0	37,9x17,9	44,7x25,0	14,5	grey	800	-
062470400001000	70x40x4	70,8x40,1	5,7	60,9x31,3	65,9x35,9	17,9	black	500	-
062470400002000	70x40x4	70,8x40,1	5,7	60,9x31,3	65,9x35,9	17,9	grey	500	500
062480400001000	80x40x4	79,2x39,9	5,0	69,3x29,3	73,8x33,6	18,1	black	500	-
062480400002000	80x40x4	79,2x39,9	5,0	69,3x29,3	73,8x33,6	18,1	grey	500	500
062480400003000	80x40x4	79,2x39,9	5,0	5,0	73,8x33,6	18,1	white	500	1000
062480500001000	80x50x4	80,4x50,3	5,0	68,4x39,4	76,9x46,7	24,3	black	50	-
062480500002000	80x50x4	80,4x50,3	5,0	68,4x39,4	76,9x46,7	24,3	grey	50	-
062480600001000	80x60x4-6	80,0x60,0	5,0	62,8x42,2	73,6x53,1	24,0	black	175	-
062480600002000	80x60x4-6	80,0x60,0	5,0	62,8x42,2	73,6x53,1	24,0	grey	175	-
062480600003000	80x60x4-6	80,0x60,0	5,0	62,8x42,2	73,6x53,1	24,0	white	175	175

Please note that the product illustrations are exemplary images that could deviate from the ordered/delivered products.

All of the dimensions are in mm should nothing to the contrary be stated.

*PU = Packaging Unit, SW = Spanner opening, n.w. = not detachable, o. K. = excl. The head, o. B. = excl. The collar, m. R. = with the radius, MOQ = Minimum Order Quantity.

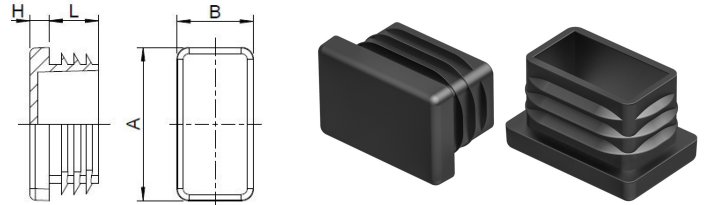
** MOQ: Parts with MOQ, set-up costs may apply.

! We exclusively sell to the trade and industry. Please note our minimum order quantities and the minimum order value per delivery.
We would be pleased to send you an offer that is tailored to your needs should you require special colours, deviating dimensions, bioplastics, or larger order quantities.

Inserts for rectangular tubes

F

Application: for rectangular tubes
Material: polyethylene
Standard-Colour: black



Order No.	Tube size	Head plate	Height	Shaft size	Dimension of ribs	Shaft length	Colour	PU*	MOQ**
		A x B	H	d x b	d1 x b1	L			
062510050001000	100x50x5	99,4x49,6	6,0	82,6x32,8	94,6x44,4	24,5	black	25	-
062512060001000	120x60x5	119,7x60,3	5,0	110,2x49,9	113,5x 53,7	17,5	black	25	-
062580400001000	80x40x3-5	80,0x40,0	5,0	67,5x27,0	74,8x35,0	14,5	black	350	-
062580600001000	80x60x5	80,0x59,9	5,2	66,9x48,1	70,3x51,7	18,2	black	50	-
062580600002000	80x60x5	80,0x59,9	5,2	66,9x48,1	70,3x51,7	18,2	grey	50	-

Please note that the product illustrations are exemplary images that could deviate from the ordered/delivered products.

All of the dimensions are in mm should nothing to the contrary be stated.

*PU = Packaging Unit, SW = Spanner opening, n.w. = not detachable, o. K. = excl. The head, o. B. = excl. The collar, m. R. = with the radius, MOQ = Minimum Order Quantity.

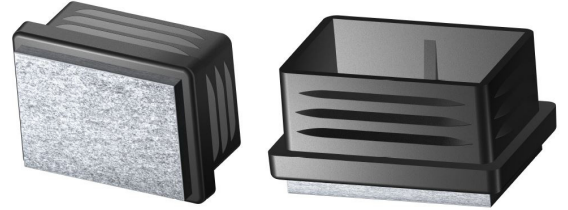
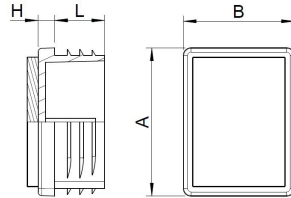
** MOQ: Parts with MOQ, set-up costs may apply.

We exclusively sell to the trade and industry. Please note our minimum order quantities and the minimum order value per delivery. We would be pleased to send you an offer that is tailored to your needs should you require special colours, deviating dimensions, bioplastics, or larger order quantities.

Glides with felt slide base

FF

Application: for rectangular tubes
Material: PE
Standard-Colour: black



Order No.	Tube size	Head plate	Height	Shaft size	Dimension of ribs	Shaft length	Colour	PU*	MOQ**
		A x B	H	d x b	d1 x b1	L			
062020150001/FI	20x15	20,1x15,0	5,0	15,5x10,7	18,9x13,9	11,3	black	1000	-
062025150001/FI	25x15	25,1x15,0	4,9	19,6x10,4	23,9x14,3	11,8	black	1000	-
062025200001/FI	25x20	25,2x20,3	4,7	20,5x15,6	24,0x19,1	14,4	black	1000	2000
062030100001/FI	30x10	30,1x10,3	5,0	25,6x6,2	28,1x8,8	12,7	black	1000	4000
062030150001/FI	30x15	30,0x15,0	5,0	25,5x10,5	28,0x13,0	12,0	black	500	-
062030200001/FI	30x20	30,0x20,0	5,0	25,0x14,9	28,5x18,5	14,0	black	1000	7000
062035150001/FI	35x15	35,1x15,2	4,9	30,3x9,7	33,1x13,1	12,3	black	1000	2000
062035200001/FI	35x20	35,0x20,0	5,0	28,5x13,5	33,5x18,5	13,0	black	500	1000
062040100001/FI	40x10	40,0x10,0	5,0	34,0x5,0	37,5x7,5	11,0	black	1000	1000
062040150001/FI	40x15	39,9x15,1	5,0	35,4x10,3	38,7x13,4	11,7	black	500	2000
062040200001/FI	40x20	40,0x20,0	4,6	35,1x14,8	38,2x17,9	13,9	black	500	5500

Please note that the product illustrations are exemplary images that could deviate from the ordered/delivered products.

All of the dimensions are in mm should nothing to the contrary be stated.

*PU = Packaging Unit, SW = Spanner opening, n.w. = not detachable, o. K. = excl. The head, o. B. = excl. The collar, m. R. = with the radius, MOQ = Minimum Order Quantity.

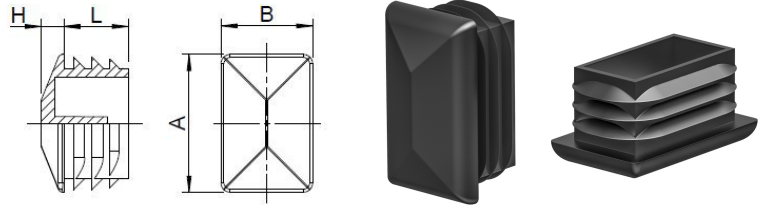
** MOQ: Parts with MOQ, set-up costs may apply.

We exclusively sell to the trade and industry. Please note our minimum order quantities and the minimum order value per delivery. We would be pleased to send you an offer that is tailored to your needs should you require special colours, deviating dimensions, bioplastics, or larger order quantities.



Decorative inserts

Application: for rectangular tubes
 Additional Info: Attention! Please consider that not all
 glides have the same clamping ribs
 form
 Material: polyethylene
 Standard-Colour: black, grey



Order No.	Tube size	For tube wall thickness	Head plate	Height	Shaft	Dimension of ribs	Shaft length	Colour	PU*	MOQ**
			A x B	H	d x b	d1 x b1	L			
062525150001000	25x15	1-2	25,0x15,0	5,0	19,5x10,5	23,5x13,5	12,0	black	1000	4000
062525150002000	25x15	1-2	25,0x15,0	5,0	19,5x10,5	23,5x13,5	12,0	grey	1000	4000
062530100001000	30x10	1-2	30,0x10,0	5,0	25,9x6,0	29,0x9,0	12,0	black	5000	5000
062530100002000	30x10	1-2	30,0x10,0	5,0	25,9x6,0	29,0x9,0	12,0	grey	5000	5000
062530150001000	30x15	1,5-2	30,0x15,0	5,0	25,5x10,5	28,0x13,0	12,0	black	5000	5000
062530150002000	30x15	1,5-2	30,0x15,0	5,0	25,5x10,5	28,0x13,0	12,0	grey	5000	5000
062530150002001	30x15	1,5-2	30,0x15,0	5,0	25,5x10,5	28,0x13,0	12,0	grey	1000	5000
062530200001000	30x20	1,5-2	30,0x20,0	5,0	25,0x15,0	28,2x18,1	14,0	black	2500	2500
062530200001001	30x20	1,5-2	30,0x20,0	5,0	25,0x15,0	28,2x18,1	14,0	black	500	2500
062530200002000	30x20	1,5-2	30,0x20,0	5,0	25,0x15,0	28,2x18,1	14,0	grey	2500	2500
062540150001000	40x15	1-2	40,0x15,0	5,0	35,7x10,5	38,9x13,4	12,0	black	1000	4000
062540200001000	40x20	1-2	40,0x20,0	5,0	35,5x15,0	38,5x18,5	14,0	black	3000	-
062540200001001	40x20	1-2	40,0x20,0	5,0	35,5x15,0	38,5x18,5	14,0	black	250	3000
062540200002000	40x20	1-2	40,0x20,0	5,0	35,5x15,0	38,5x18,5	14,0	grey	3000	3000
062540200002001	40x20	1-2	40,0x20,0	5,0	35,5x15,0	38,5x18,5	14,0	grey	250	3000
062540300001000	40x30	1,5-2	40,0x30,0	5,0	35,5x25,3	38,0x28,0	13,0	black	1000	2000
062540300002000	40x30	1,5-2	40,0x30,0	5,0	35,5x25,3	38,0x28,0	13,0	grey	1000	2000
062550200001000	50x20	1,5-2	50,0x20,0	5,0	45,5x15,0	48,0x18,0	13,0	black	2000	2000
062550200001001	50x20	1,5-2	50,0x20,0	5,0	45,5x15,0	48,0x18,0	13,0	black	500	2000
062550200002000	50x20	1,5-2	50,0x20,0	5,0	45,5x15,0	48,0x18,0	13,0	grey	2000	2000
062550300001000	50x30	1,5-2	50,0x30,0	5,0	45,0x25,0	48,0x28,0	13,0	black	1000	-
062550300002000	50x30	1,5-2	50,0x30,0	5,0	45,0x25,0	48,0x28,0	13,0	grey	1000	1000
062550400001000	50x40	1-2	50,0x40,0	5,0	43,0x33,0	48,5x38,5	12,0	black	1000	1000
062550400002000	50x40	1-2	50,0x40,0	5,0	43,0x33,0	48,5x38,5	12,0	grey	1000	1000
062560200001000	60x20	1,5-2	60,0x20,0	5,0	54,0x14,0	58,0x18,0	14,0	black	1000	-
062560200002000	60x20	1,5-2	60,0x20,0	5,0	54,0x14,0	58,0x18,0	14,0	grey	1000	2000
062560300001000	60x30	1,5-2	60,0x30,0	5,0	54,0x24,0	57,5x27,5	14,0	black	1000	-
062560300002000	60x30	1,5-2	60,0x30,0	5,0	54,0x24,0	57,5x27,5	14,0	grey	1000	-
062560400001000	60x40	1,5-2,5	60,0x40,0	5,0	52,0x32,0	58,0x38,0	14,0	black	500	-
062560400002000	60x40	1,5-2,5	60,0x40,0	5,0	52,0x32,0	58,0x38,0	14,0	grey	500	1500

Please note that the product illustrations are exemplary images that could deviate from the ordered/delivered products.

All of the dimensions are in mm should nothing to the contrary be stated.

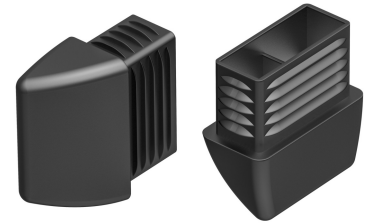
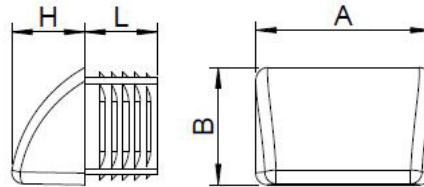
*PU = Packaging Unit, SW = Spanner opening, n.w. = not detachable, o. K. = excl. The head, o. B. = excl. The collar, m. R. = with the radius, MOQ = Minimum Order Quantity.

** MOQ: Parts with MOQ, set-up costs may apply.

! We exclusively sell to the trade and industry. Please note our minimum order quantities and the minimum order value per delivery.
 We would be pleased to send you an offer that is tailored to your needs should you require special colours, deviating dimensions, bioplastics, or larger order quantities.

Inserts for rectangular tubes

Application: for rectangular tubes
 Additional Info: Attention! Please consider that not all glides have the same clamping ribs form
 Material: polyethylene
 Standard-Colour: black



Order No.	Tube size	Height	Shaft size	Shaft length	Dimension of ribs	Colour	PU*	MOQ**
	A x B	H	d x b	L	d1 x b1			
062830200001000	30x20x1,5-2	25,0	23,0x13,0	25,0	27,6x17,6	black	500	1000
062840250001000	40x25x1,5-2	25,0	33,0x18,0	25,0	38,4x22,9	black	1000	1000
062850250001000	50x25x1,5-2	25,0	43,0 x 18,0	25,0	47,0 x 22,0	black	500	1000
062850300001000	50x30x1,5-2	25,0	43,0x23,0	25,0	48,3x28,1	black	500	-
062860200001000	60x20x1,5-2	25,0	53,0 x 13,0	25,0	57,0 x 17,0	black	500	1000
062860300001000	60x30x1,5-2	25,0	53,0 x 23,0	25,0	57,0 x 27,0	black	500	-
062860400001000	60x40x1,5-2	25,0	53,0 x 33,0	25,0	57,0 x 37,0	black	250	750

Please note that the product illustrations are exemplary images that could deviate from the ordered/delivered products.

All of the dimensions are in mm should nothing to the contrary be stated.

*PU = Packaging Unit, SW = Spanner opening, n.w. = not detachable, o. K. = excl. The head, o. B. = excl. The collar, m. R. = with the radius, MOQ = Minimum Order Quantity.

** MOQ: Parts with MOQ, set-up costs may apply.



We exclusively sell to the trade and industry. Please note our minimum order quantities and the minimum order value per delivery.

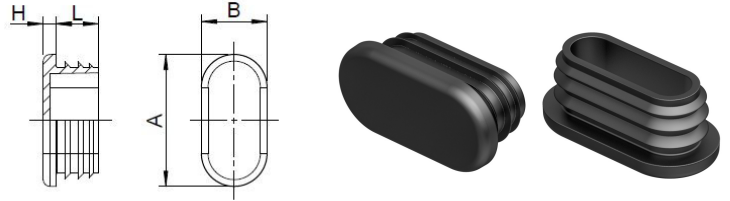
We would be pleased to send you an offer that is tailored to your needs should you require special colours, deviating dimensions, bioplastics, or larger order quantities.



Inserts for oval tubes

FO

Application: for oval tubes
 Additional Info: optionally available with welded felt.
 Attention! Please consider that not all glides have the same clamping ribs form
 Material: polyethylene
 Standard-Colour: black



Order No.	For flat oval tube	Head plate	Height	Shaft dimension	Shaft length	Dimension of ribs	Colour	PU*	MOQ**
	A x B	H	d x b	L	d1 x b1				
063020100001000	20x10	20,5x10,0	3,0	13,2x3,2	10,5	18,0x8,1	black	10000	10000
063020100001001	20x10	20,5x10,0	3,0	13,2x3,2	10,5	18,0x8,1	black	1000	10000
063020100002000	20x10	20,5x10,0	3,0	13,2x3,2	10,5	18,0x8,1	grey	10000	10000
063020100003000	20x10	20,5x10,0	3,0	13,2x3,2	10,5	18,0x8,1	white	10000	10000
063030150001000	30x15	30,0x15,0	2,9	24,0x8,9	16,0	27,4x12,5	black	5000	-
063030150001001	30x15	30,0x15,0	2,9	24,0x8,9	16,0	27,4x12,5	black	500	5000
063030150002000	30x15	30,0x15,0	2,9	24,0x8,9	16,0	27,4x12,5	grey	5000	5000
063030150003000	30x15	30,0x15,0	2,9	24,0x8,9	16,0	27,4x12,5	white	5000	-
063030150003001	30x15	30,0x15,0	2,9	24,0x8,9	16,0	27,4x12,5	white	500	5000
063030200001000	30x20x1-2	30,0x20,0	3,9	25,0x15,0	11,9	28,6x18,6	black	1000	3000
063030200002000	30x20x1-2	30,0x20,0	3,9	25,0x15,0	11,9	28,6x18,6	grey	1000	4000
063030200003000	30x20x1-2	30,0x20,0	3,9	25,0x15,0	11,9	28,6x18,6	white	1000	4000
063035150001000	35x15x1,2 -2,5	35,0x14,9	4,9	27,3x7,8	11,7	33,9x14,1	black	1000	3000
063035150002000	35x15x1,2 -2,5	35,0x14,9	4,9	27,3x7,8	11,7	33,9x14,1	grey	5000	5000
063035150003000	35x15x1,2 -2,5	35,0x14,9	4,9	27,3x7,8	11,7	33,9x14,1	white	5000	5000
063035200001000	35x20	35,1x19,9	5,3	29,5x14,2	11,9	33,1x17,9	black	5000	-
063035200001001	35x20	35,1x19,9	5,3	29,5x14,2	11,9	33,1x17,9	black	500	5000
063035200002000	35x20	35,1x19,9	5,3	29,5x14,2	11,9	33,1x17,9	grey	5000	5000
063035200003000	35x20	35,1x19,9	5,3	29,5x14,2	11,9	33,1x17,9	white	5000	5000
063038200001000	38x20	38,1x19,9	4,9	32,6x13,9	11,3	37,4x18,7	black	4000	-
063038200001001	38x20	38,1x19,9	4,9	32,6x13,9	11,3	37,4x18,7	black	500	4000
063038200002000	38x20	38,1x19,9	4,9	32,6x13,9	11,3	37,4x18,7	grey	4000	4000
063038200003000	38x20	38,1x19,9	4,9	32,6x13,9	11,3	37,4x18,7	white	4000	4000
063040200001000	40x20	40,0x20,0	4,8	34,0x14,0	11,5	38,5x18,5	black	1000	-
063040200002000	40x20	40,0x20,0	4,8	34,0x14,0	11,5	38,5x18,5	grey	1000	3000
063040200003000	40x20	40,0x20,0	4,8	34,0x14,0	11,5	38,5x18,5	white	1000	3000
063048200001000	48x20	48,0x20,0	4,8	42,0x14,0	11,5	46,5x18,5	black	1000	3000
063048200002000	48x20	48,0x20,0	4,8	42,0x14,0	11,5	46,5x18,5	grey	1000	3000
063048200003000	48x20	48,0x20,0	4,8	42,0x14,0	11,5	46,5x18,5	white	1000	3000
063050200001000	50x20	50,0x20,0	4,8	44,0x14,0	11,5	48,8x18,5	black	1000	-
063050200002000	50x20	50,0x20,0	4,8	44,0x14,0	11,5	48,8x18,5	grey	1000	3000

Please note that the product illustrations are exemplary images that could deviate from the ordered/delivered products.

All of the dimensions are in mm should nothing to the contrary be stated.

*PU = Packaging Unit, SW = Spanner opening, n.w. = not detachable, o. K. = excl. The head, o. B. = excl. The collar, m. R. = with the radius, MOQ = Minimum Order Quantity.

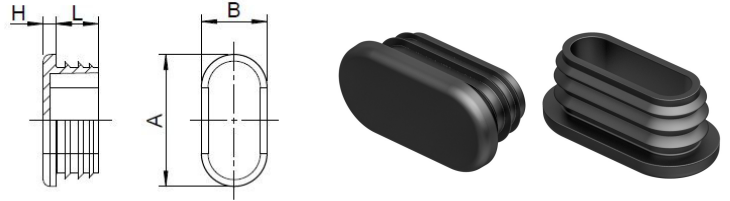
** MOQ: Parts with MOQ, set-up costs may apply.

! We exclusively sell to the trade and industry. Please note our minimum order quantities and the minimum order value per delivery.
 We would be pleased to send you an offer that is tailored to your needs should you require special colours, deviating dimensions, bioplastics, or larger order quantities.



Inserts for oval tubes

Application: for oval tubes
Material: polyethylene
Standard-Colour: black

FO


Order No.	For flat oval tube	Head plate	Height	Shaft dimension	Shaft length	Dimension of ribs	Colour	PU*	MOQ**
		A x B	H	d x b	L	d1 x b1			
063050200003000	50x20	50,0x20,0	4,8	44,0x14,0	11,5	48,8x18,5	white	1000	3000
063050250001000	50x25	49,7x24,7	5,0	42,2x16,2	11,8	48,9x23,3	black	1000	2000
063050250002000	50x25	49,7x24,7	5,0	42,2x16,2	11,8	48,9x23,3	grey	1000	2000
063050250003000	50x25	49,7x24,7	5,0	42,2x16,2	11,8	48,9x23,3	white	1000	2000
063050300001000	50x30	49,8x27,8	5,0	42,3x21,1	11,5	49,0x27,9	black	1000	1000
063060200001000	60x20	59,5x20,2	4,9	53,9x13,8	13,8	58,8x18,8	black	1000	2000
063060200002000	60x20	59,5x20,2	4,9	53,9x13,8	13,8	58,8x18,8	grey	1000	2000
063060200003000	60x20	59,5x20,2	4,9	53,9x13,8	13,8	58,8x18,8	white	1000	2000
063060300001000	60x30	60,0x30,3	4,7	54,0x24,5	13,5	57,8x28,1	black	1000	-
063060300001001	60x30	60,0x30,3	4,7	54,0x24,5	13,5	57,8x28,1	black	100	1000
063060300002000	60x30	60,0x30,3	4,7	54,0x24,5	13,5	57,8x28,1	grey	1000	2000
063060300003000	60x30	60,0x30,3	4,7	54,0x24,5	13,5	57,8x28,1	white	1000	2000
063080250001000	80x25x1,2 -2,5	80,0x25,0	5,0	71,6x15,5	14,5	78,4x22,9	black	650	650
063225120001000	25x12	25,0x12,0	3,0	17,2x5,0	10,5	22,0x10,0	black	5000	-
063225120001001	25x12	25,0x12,0	3,0	17,2x5,0	10,5	22,0x10,0	black	1000	5000
063225120002000	25x12	25,0x12,0	3,0	17,2x5,0	10,5	22,0x10,0	grey	5000	5000
063225120003000	25x12	25,0x12,0	3,0	17,2x5,0	10,5	22,0x10,0	white	5000	5000
063330150001000	30x15x1,5 -2,5	29,6x15,3	2,9	23,6x8,8	9,7	26,4x11,3	black	5000	-
063330150001001	30x15x1,5 -2,5	29,6x15,3	2,9	23,6x8,8	9,7	26,4x11,3	black	1000	5000
063330150002000	30x15x1,5 -2,5	29,6x15,3	2,9	23,6x8,8	9,7	26,4x11,3	grey	5000	5000
063330150003000	30x15x1,5 -2,5	29,6x15,3	2,9	23,6x8,8	9,7	26,4x11,3	white	5000	5000
063340200001000	40x20x2,5	39,9x20,2	3,1	33,3x13,1	11,8	36,4x16,7	black	1000	1000
063340200002000	40x20x2,5	39,9x20,2	3,1	33,3x13,1	11,8	36,4x16,7	grey	1000	1000
063340200003000	40x20x2,5	39,9x20,2	3,1	33,3x13,1	11,8	36,4x16,7	white	1000	1000

Please note that the product illustrations are exemplary images that could deviate from the ordered/delivered products.

All of the dimensions are in mm should nothing to the contrary be stated.

*PU = Packaging Unit, SW = Spanner opening, n.w. = not detachable, o. K. = excl. The head, o. B. = excl. The collar, m. R. = with the radius, MOQ = Minimum Order Quantity.

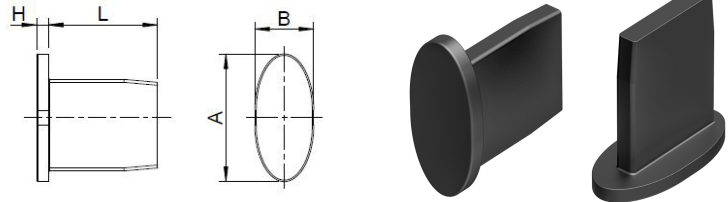
** MOQ: Parts with MOQ, set-up costs may apply.

! We exclusively sell to the trade and industry. Please note our minimum order quantities and the minimum order value per delivery. We would be pleased to send you an offer that is tailored to your needs should you require special colours, deviating dimensions, bioplastics, or larger order quantities.

Inserts with stopper (without ribs)

Application: for oval tubes
Material: polyethylene
Standard-Colour: black

FOG 1



Order No.	Head plate	Height	Shaft size	Shaft length	Colour	PU*	MOQ**
	A x B	H	d x b	L			
063635200001000	42,0x21,0	4,2	31,0x5,5	36,5	black	100	1000

Please note that the product illustrations are exemplary images that could deviate from the ordered/delivered products.

All of the dimensions are in mm should nothing to the contrary be stated.

*PU = Packaging Unit, SW = Spanner opening, n.w. = not detachable, o. K. = excl. The head, o. B. = excl. The collar, m. R. = with the radius, MOQ = Minimum Order Quantity.

** MOQ: Parts with MOQ, set-up costs may apply.



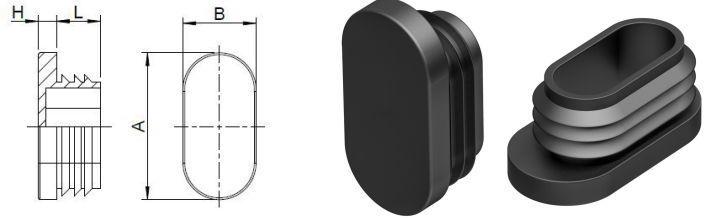
We exclusively sell to the trade and industry. Please note our minimum order quantities and the minimum order value per delivery.

We would be pleased to send you an offer that is tailored to your needs should you require special colours, deviating dimensions, bioplastics, or larger order quantities.

Inserts with stopper (and ribs) for oval tubes

Application: for oval tubes
Material: polyethylene
Standard-Colour: black

FOG 2



Order No.	Head plate	Height	Shaft size	Shaft length	Rib size	Colour	PU*	MOQ**
	A x B	H	d x b	L	d1 x b1			
063630150001000	35,0x15,0	3,2	25,5x10,5	11,8	27,6x13,6	black	1000	5000

Please note that the product illustrations are exemplary images that could deviate from the ordered/delivered products.

All of the dimensions are in mm should nothing to the contrary be stated.

*PU = Packaging Unit, SW = Spanner opening, n.w. = not detachable, o. K. = excl. The head, o. B. = excl. The collar, m. R. = with the radius, MOQ = Minimum Order Quantity.

** MOQ: Parts with MOQ, set-up costs may apply.

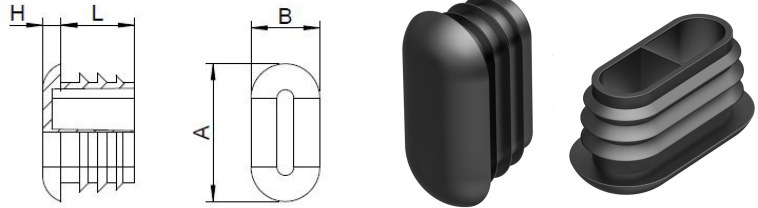


We exclusively sell to the trade and industry. Please note our minimum order quantities and the minimum order value per delivery.

We would be pleased to send you an offer that is tailored to your needs should you require special colours, deviating dimensions, bioplastics, or larger order quantities.

Decorative inserts for oval tubes

Application: for oval tubes
 Additional Info: Attention! Please consider that not all glides have the same clamping ribs form
 Material: polyethylene
 Standard-Colour: black



Order No.	For flat oval tube	Head	Height	Shaft dimension	Shaft length	Dimension of ribs	Colour	PU*	MOQ**
	A x B	H	d x b	L	d1 x b1				
630030150001000	30x15x1,5 -2	30,0x15,0	4,0	24,0x9,0	16,0	27,5x12,5	black	5000	-
630030150002000	30x15x1,5 -2	30,0x15,0	4,0	24,0x9,0	16,0	27,5x12,5	grey	5000	5000
630035150001000	35x15x1,5 -2	35,0x15,0	4,5	27,5x8,0	12,0	33,5x13,9	black	1000	-
630038200001000	38x20x1,5 -2	38,0x20,0	4,5	32,5x14,2	12,0	37,5x19,2	black	1000	4000
630038200003000	38x20x1,5 -2	38,0x20,0	4,5	32,5x14,2	12,0	37,5x19,2	white	1000	4000
630040200001000	40x20x1,5 -2	40,0x20,0	5,0	34,0x14,0	12,0	39,0x18,5	black	2000	-
630040200003000	40x20x1,5 -2	40,0x20,0	5,0	34,0x14,0	12,0	39,0x18,5	white	2000	4000
630050200001000	50x20x1,5 -2	50,0x20,0	5,0	44,0x14,0	12,0	49,0x18,7	black	2000	-
630050200001001	50x20x1,5 -2	50,0x20,0	5,0	44,0x14,0	12,0	49,0x18,7	black	500	2000
630050200003000	50x20x1,5 -2	50,0x20,0	5,0	44,0x14,0	12,0	49,0x18,7	white	1000	3000
630060300001000	60x30x1,5 -2	60,0x30,0	8,0	54,5x24,0	13,5	58,1x28,1	black	1000	-
630060300001001	60x30x1,5 -2	60,0x30,0	8,0	54,5x24,0	13,5	58,1x28,1	black	100	1000
630060300002000	60x30x1,5 -2	60,0x30,0	8,0	54,5x24,0	13,5	58,1x28,1	grey	1000	2000

Please note that the product illustrations are exemplary images that could deviate from the ordered/delivered products.

All of the dimensions are in mm should nothing to the contrary be stated.

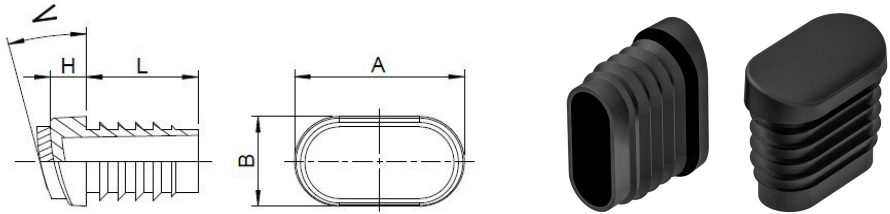
*PU = Packaging Unit, SW = Spanner opening, n.w. = not detachable, o. K. = excl. The head, o. B. = excl. The collar, m. R. = with the radius, MOQ = Minimum Order Quantity.

** MOQ: Parts with MOQ, set-up costs may apply.

We exclusively sell to the trade and industry. Please note our minimum order quantities and the minimum order value per delivery. We would be pleased to send you an offer that is tailored to your needs should you require special colours, deviating dimensions, bioplastics, or larger order quantities.

Angled glides for oval tubes

Application: for oval tubes
 Additional Info: optionally available with welded felt.
 Attention! Please consider that not all glides have the same clamping ribs form
 Material: polyethylene
 Standard-Colour: black



Order No.	For flat oval tube	Height	Shaft size	Shaft length	Dimension of ribs	Angle	Colour	PU*	MOQ**
	A x B	H	d x b	L	d1 x b1	W			
063830150001000	30x15	6,0	24,0x9,0	25,0	27,7x12,4	0-20°	black	1500	-
063830150002000	30x15	6,0	24,0x9,0	25,0	27,7x12,4	0-20°	grey	1500	1500
063838200001000	38x20	8,0	32,0x14,0	25,0	35,7x17,4	0-20°	black	1000	2000
063838200002000	38x20	8,0	32,0x14,0	25,0	35,7x17,4	0-20°	grey	1000	2000
063840200001000	40x20	8,0	34,0x14,0	25,0	37,7x17,4	0-20°	black	1000	-
063840200002000	40x20	8,0	34,0x14,0	25,0	37,7x17,4	0-20°	grey	1000	2000
063840200003000	40x20	8,0	34,0x14,0	25,0	37,7x17,4	0-20°	white	1000	2000
063848200001000	48x20	8,0	42,0x14,0	25,0	45,7x17,4	0-20°	black	500	1500
064830150001000	30x15 mit Filz	9,0	24,0x9,0	25,0	27,7x12,4	0-20°	black	500	-
064838200001000	38x20 mit Filz	11,0	32,0x14,0	25,0	35,7x17,4	0-20°	black	100	2000
064840200001000	40x20 mit Filz	11,0	34,0x14,0	25,0	37,7x17,4	0-20°	black	100	-

Please note that the product illustrations are exemplary images that could deviate from the ordered/delivered products.

All of the dimensions are in mm should nothing to the contrary be stated.

*PU = Packaging Unit, SW = Spanner opening, n.w. = not detachable, o. K. = excl. The head, o. B. = excl. The collar, m. R. = with the radius, MOQ = Minimum Order Quantity.

** MOQ: Parts with MOQ, set-up costs may apply.

We exclusively sell to the trade and industry. Please note our minimum order quantities and the minimum order value per delivery. We would be pleased to send you an offer that is tailored to your needs should you require special colours, deviating dimensions, bioplastics, or larger order quantities.