

10

Connectors and fasteners

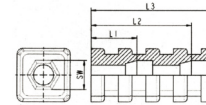
For rectangular, square, and round tubes. Plug-in connectors for tubes.

 JE 1 Page: 2	 JRE Page: 3	 VA1 Page: 5	 VA2 Page: 6	 VB1 Page: 7	 VB2 Page: 8	 VC1 Page: 9	 VC2 Page: 10
 VG1 Page: 11	 VG2 Page: 12	 VG3 Page: 13	 VGQ Page: 14	 VGR Page: 15	 VK1 Page: 16	 VK2 Page: 17	 VS1 Page: 18
 VS2 Page: 19	 VT1 Page: 20	 VT2 Page: 21	 VW1 Page: 22	 VW2 Page: 23			

Expander connectors for square tubes

JE 1

Application: for square tubes
Material: polyamide
Standard-Colour: black



Order No.	Tube dimension	With / for nut	SW nut	Nut mounted on position	Colour	PU*	MOQ**
K20181580001000	18x18x1,5	M8	13	ohne/without	black	2000	-
K20201560001000	20x20x1,5	M6	10	ohne/without	black	1900	-
K20201580001000	20x20x1,5	M8	13	ohne/without	black	2000	-
K20202080001000	20x20x2	M8	13	ohne/without	black	2000	-
K20221560001000	22x22x1,5	M6	10	ohne/without	black	1500	-
K20221580001000	22x22x1,5	M8	13	ohne/without	black	1750	-
K21251580001000	25x25x1,5	M8	13	L1	black	700	-
K20251510001000	25x25x1,5	M10	17	ohne/without	black	1250	-
K20252080001000	25x25x2	M8	13	ohne/without	black	1250	-
K20301510001000	30x30x1,5	M10	17	ohne/without	black	850	-
K20302080001000	30x30x2	M8	13	ohne/without	black	1000	-
K20302010001000	30x30x2	M10	17	ohne/without	black	900	-
K20352010001000	35x35x2	M10	17	ohne/without	black	600	-
K20402010001000	40x40x2	M10	17	ohne/without	black	450	-
K20452010001000	45x45x1,5	M10	17	ohne/without	black	350	-

Please note that the product illustrations are exemplary images that could deviate from the ordered/delivered products.

All of the dimensions are in mm should nothing to the contrary be stated.

*PU = Packaging Unit, SW = Spanner opening, n.w. = not detachable, o. K. = excl. The head, o. B. = excl. The collar, m. R. = with the radius, MOQ = Minimum Order Quantity.

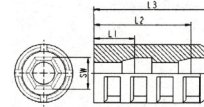
** MOQ: Parts with MOQ, set-up costs may apply.

! We exclusively sell to the trade and industry. Please note our minimum order quantities and the minimum order value per delivery.
We would be pleased to send you an offer that is tailored to your needs should you require special colours, deviating dimensions, bioplastics, or larger order quantities.

Expander connectors for round tubes

JRE

Application: for round tubes
 Additional Info: Attention! Please consider that not all glides have the same clamping ribs form
 Material: polyamide
 Standard-Colour: black



Order No.	Tube outside Ø	With/for nut	SW nut	Nut mounted on position	Colour	PU*	MOQ**
K10161060001000	16x1	M6	10	ohne/without	black	3500	-
K10191560001000	19x1,5	M6	10	ohne/without	black	3000	-
K10201080001000	20x1	M8	13	ohne/without	black	2000	-
K10201560001000	20x1,5	M6	10	ohne/without	black	2500	-
K11201560001000	20x1,5	M6	10	L1	black	1000	-
K10201580001000	20x1,5	M8	13	ohne/without	black	2500	-
K10202080001000	20x2	M8	13	ohne/without	black	3000	-
K10221080001000	22x1	M8	13	ohne/without	black	2000	-
K10221560001000	22x1,5	M6	10	ohne/without	black	2000	-
K10221580001000	22x1,5	M8	13	ohne/without	black	2000	4000
K11221580001000	22x1,5	M8	13	L1	black	1000	3000
K10251560001000	25x1,5	M6	10	ohne/without	black	1500	-
K11251560001000	25x1,5	M6	10	L1	black	750	-
K10251580001000	25x1,5	M8	13	ohne/without	black	1500	-
K11251580001000	25x1,5	M8	13	L1	black	750	-
K10281560001000	28x1,5	M6	10	ohne/without	black	1100	-
K10281580001000	28x1,5	M8	13	ohne/without	black	1250	-
K10282080001000	28x2	M8	13	ohne/without	black	1400	-
K10301580001000	30x1,5	M8	13	ohne/without	black	1100	-
K10301510001000	30x1,5	M8	17	ohne/without	black	1250	-
K10302080001000	30x2	M8	13	ohne/without	black	1250	-
K10302010001000	30x2	M10	17	ohne/without	black	1250	-
K10321260001000	32x1,2	M6	10	ohne/without	black	800	-
K10321510001000	32x1,5	M10	17	ohne/without	black	1000	-
K11321510001000	32x1,5	M10	17	L1	black	500	-
K10321060001000	32x2	M6	10	ohne/without	black	850	-
K10322010001000	32x2	M10	17	ohne/without	black	1000	-
K10322510001000	32x2,5	M10	17	ohne/without	black	1000	-
K10351560001000	35x1,5	M6	10	ohne/without	black	700	-
K10351510001000	35x1,5	M10	17	ohne/without	black	750	-
K10352010001000	35x2	M10	17	ohne/without	black	900	-

Please note that the product illustrations are exemplary images that could deviate from the ordered/delivered products.

All of the dimensions are in mm should nothing to the contrary be stated.

*PU = Packaging Unit, SW = Spanner opening, n.w. = not detachable, o. K. = excl. The head, o. B. = excl. The collar, m. R. = with the radius, MOQ = Minimum Order Quantity.

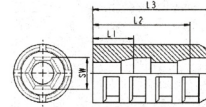
** MOQ: Parts with MOQ, set-up costs may apply.

We exclusively sell to the trade and industry. Please note our minimum order quantities and the minimum order value per delivery. We would be pleased to send you an offer that is tailored to your needs should you require special colours, deviating dimensions, bioplastics, or larger order quantities.

Expander connectors for round tubes

Application: for round tubes
Material: polyamide
Standard-Colour: black

JRE



Order No.	Tube outside Ø	With/for nut	SW nut	Nut mounted on position	Colour	PU*	MOQ**
K10352560001000	35x2,5	M6	10	ohne/without	black	900	-
K10402010001000	40x2	M10	17	ohne/without	black	500	-
K11402010001000	40x2	M10	17	L1	black	300	-
K10402560001000	40x2,5	M6	10	ohne/without	black	550	-
K10421510001000	42x1,5	M10	17	ohne/without	black	550	-
K10422010001000	42x2	M10	17	ohne/without	black	550	-
K10452010001000	45x2	M10	17	ohne/without	black	450	-
K10601610001000	60x1,6	M10	17	ohne/without	black	250	-
K10602080001000	60x2	M8	13	ohne/without	black	250	-

Please note that the product illustrations are exemplary images that could deviate from the ordered/delivered products.

All of the dimensions are in mm should nothing to the contrary be stated.

*PU = Packaging Unit, SW = Spanner opening, n.w. = not detachable, o. K. = excl. The head, o. B. = excl. The collar, m. R. = with the radius, MOQ = Minimum Order Quantity.

** MOQ: Parts with MOQ, set-up costs may apply.

We exclusively sell to the trade and industry. Please note our minimum order quantities and the minimum order value per delivery. We would be pleased to send you an offer that is tailored to your needs should you require special colours, deviating dimensions, bioplastics, or larger order quantities.

Plug-in connectors for square tubes, cross with outlet

VA1

Application: for square tubes
 Additional Info: for square tubes, cross with outlet, half-shells suitable for arming with steel cores
 Material: polyamide
 Standard-Colour: black



Order No.	For tube	Pin length	Colour	PU*	MOQ**
K3DSV20K0001000	20 x 20 x 1,5	36	black	50	100
K3DSV25K0001000	25 x 25 x 1,5	54	black	50	100
K3DSV30K0001000	30 x 30 x 2,0	47	black	50	100

Please note that the product illustrations are exemplary images that could deviate from the ordered/delivered products.

All of the dimensions are in mm should nothing to the contrary be stated.

*PU = Packaging Unit, SW = Spanner opening, n.w. = not detachable, o. K. = excl. The head, o. B. = excl. The collar, m. R. = with the radius, MOQ = Minimum Order Quantity.

** MOQ: Parts with MOQ, set-up costs may apply.

We exclusively sell to the trade and industry. Please note our minimum order quantities and the minimum order value per delivery. We would be pleased to send you an offer that is tailored to your needs should you require special colours, deviating dimensions, bioplastics, or larger order quantities.

Plug-in connectors for square tubes, cross with outlet

VA2

Application: for square tubes
 Additional Info: for square tubes, cross with outlet, one-piece
 Material: PA GF
 Standard-Colour: grey similar to RAL 7035



Order No.	For tube	Pin length	Colour	PU*	MOQ**
K3DSV20MKG1157000	20 x 20 x 1,5	30	grey	200	200

Please note that the product illustrations are exemplary images that could deviate from the ordered/delivered products.

All of the dimensions are in mm should nothing to the contrary be stated.

*PU = Packaging Unit, SW = Spanner opening, n.w. = not detachable, o. K. = excl. The head, o. B. = excl. The collar, m. R. = with the radius, MOQ = Minimum Order Quantity.

** MOQ: Parts with MOQ, set-up costs may apply.

We exclusively sell to the trade and industry. Please note our minimum order quantities and the minimum order value per delivery. We would be pleased to send you an offer that is tailored to your needs should you require special colours, deviating dimensions, bioplastics, or larger order quantities.

Plug-in connectors for square tubes - angle with outlet

VB1

Application: for square tubes
 Additional Info: for square tubes, angle with outlet, half-shells suitable for arming with steel cores
 Material: polyamide
 Standard-Colour: black



Order No.	For tube	Pin length	Colour	PU*	MOQ**
K3D3V20K0001000	20 x 20 x 1,5	36	black	300	300
K3D3V25K0001000	25 x 25 x 1,5	52	black	100	100
K3D3V30K0001000	30 x 30 x 2,0	47	black	100	100

Please note that the product illustrations are exemplary images that could deviate from the ordered/delivered products.

All of the dimensions are in mm should nothing to the contrary be stated.

*PU = Packaging Unit, SW = Spanner opening, n.w. = not detachable, o. K. = excl. The head, o. B. = excl. The collar, m. R. = with the radius, MOQ = Minimum Order Quantity.

** MOQ: Parts with MOQ, set-up costs may apply.

We exclusively sell to the trade and industry. Please note our minimum order quantities and the minimum order value per delivery. We would be pleased to send you an offer that is tailored to your needs should you require special colours, deviating dimensions, bioplastics, or larger order quantities.

Plug-in connectors for square tubes - angle with outlet

VB2

Application: for square tubes
 Additional Info: for square tubes, angle with outlet, one-piece
 Material: PA GF
 Standard-Colour: grey similar to RAL 7035



Order No.	For tube	Pin length	Colour	PU*	MOQ**
K3D3V20MKGF1157000	20 x 20 x 1,5	30	grey	350	350
K3D3V25X2MKGF1157000	25 x 25 x 2,0	40	grey	170	170

Please note that the product illustrations are exemplary images that could deviate from the ordered/delivered products.

All of the dimensions are in mm should nothing to the contrary be stated.

*PU = Packaging Unit, SW = Spanner opening, n.w. = not detachable, o. K. = excl. The head, o. B. = excl. The collar, m. R. = with the radius, MOQ = Minimum Order Quantity.

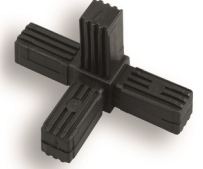
** MOQ: Parts with MOQ, set-up costs may apply.

We exclusively sell to the trade and industry. Please note our minimum order quantities and the minimum order value per delivery. We would be pleased to send you an offer that is tailored to your needs should you require special colours, deviating dimensions, bioplastics, or larger order quantities.

Plug-in connectors for square tubes, T-piece with outlet

VC1

Application: for square tubes
 Additional Info: for square tubes, T-pieces with outlet, half-shells suitable for arming with steel cores
 Material: polyamide
 Standard-Colour: black



Order No.	For tube	Pin length	Colour	PU*	MOQ**
K3D4V20K0001000	20 x 20 x 1,5	36	black	200	200
K3D4V25K0001000	25 x 25 x 1,5	52	black	75	75
K3D4V30K0001000	30 x 30 x 2,0	47	black	75	75

Please note that the product illustrations are exemplary images that could deviate from the ordered/delivered products.

All of the dimensions are in mm should nothing to the contrary be stated.

*PU = Packaging Unit, SW = Spanner opening, n.w. = not detachable, o. K. = excl. The head, o. B. = excl. The collar, m. R. = with the radius, MOQ = Minimum Order Quantity.

** MOQ: Parts with MOQ, set-up costs may apply.

We exclusively sell to the trade and industry. Please note our minimum order quantities and the minimum order value per delivery. We would be pleased to send you an offer that is tailored to your needs should you require special colours, deviating dimensions, bioplastics, or larger order quantities.

Plug-in connectors for square tubes, T-piece with outlet

VC2

Application: for square tubes
 Additional Info: for square tubes, T-pieces with outlet, one-piece
 Material: PA GF
 Standard-Colour: grey similar to RAL 7035



Order No.	For tube	Pin length	Colour	PU*	MOQ**
K3D4V20MKG1157000	20 x 20 x 1,5	30	grey	250	250
K3D4V25X2MKG1157000	25 x 25 x 2,0	40	grey	120	120

Please note that the product illustrations are exemplary images that could deviate from the ordered/delivered products.

All of the dimensions are in mm should nothing to the contrary be stated.

*PU = Packaging Unit, SW = Spanner opening, n.w. = not detachable, o. K. = excl. The head, o. B. = excl. The collar, m. R. = with the radius, MOQ = Minimum Order Quantity.

** MOQ: Parts with MOQ, set-up costs may apply.

We exclusively sell to the trade and industry. Please note our minimum order quantities and the minimum order value per delivery. We would be pleased to send you an offer that is tailored to your needs should you require special colours, deviating dimensions, bioplastics, or larger order quantities.

Plug-in connectors for square tubes, joint

VG1

Application: for square tubes
 Additional Info: for square tubes, link
 Material: polyamide
 Standard-Colour: black



Order No.	For tube	Pin length	Note	Angle	Colour	PU*	MOQ**
K2D2V20KGL1800001000	20 x 20 x 1,5	35	-	0°-220°	black	200	200
K2D2V25KGL0001000	25 x 25 x 1,5	38	-	45°-195°	black	150	150
K2D2V25KGL1800001000	25 x 25 x 1,5	39	-	0°-190°	black	100	100
K2D2V25KGL0001000	25 x 25 x 1,5	50	o. K.	60°-300°	black	200	200
K2D2V30KGL0001000	30 x 30 x 2,0	41	-	45°-200°	black	100	100

Please note that the product illustrations are exemplary images that could deviate from the ordered/delivered products.

All of the dimensions are in mm should nothing to the contrary be stated.

*PU = Packaging Unit, SW = Spanner opening, n.w. = not detachable, o. K. = excl. The head, o. B. = excl. The collar, m. R. = with the radius, MOQ = Minimum Order Quantity.

** MOQ: Parts with MOQ, set-up costs may apply.

We exclusively sell to the trade and industry. Please note our minimum order quantities and the minimum order value per delivery. We would be pleased to send you an offer that is tailored to your needs should you require special colours, deviating dimensions, bioplastics, or larger order quantities.

Plug-in connectors with link for square tubes

VG2

Application: for square tubes
 Additional Info: for square tubes, link, one-piece
 Material: Polyamide
 Standard-Colour: black



	for tube	Pin length	Note	Angel	Colour	PU*	MOQ**
K3D3V20KGL1800001000	20 x 20 x 1,5	42	-	0°-190°	black	100	100
K3D3V25KGL0001000	25 x 25 x 1,5	43	-	45°-195°	black	100	100
K3D3V25KGL1800001000	25 x 25 x 1,5	43	-	0°-190°	black	75	75
K3D3V25KGL0K0001000	25 x 25 x 1,5	50	o. K.	60°-300°	black	100	100
K3D3V30KGL0001000	30 x 30 x 2,0	41	-	45°-200°	black	100	100

Please note that the product illustrations are exemplary images that could deviate from the ordered/delivered products.

All of the dimensions are in mm should nothing to the contrary be stated.

*PU = Packaging Unit, SW = Spanner opening, n.w. = not detachable, o. K. = excl. The head, o. B. = excl. The collar, m. R. = with the radius, MOQ = Minimum Order Quantity.

** MOQ: Parts with MOQ, set-up costs may apply.

We exclusively sell to the trade and industry. Please note our minimum order quantities and the minimum order value per delivery. We would be pleased to send you an offer that is tailored to your needs should you require special colours, deviating dimensions, bioplastics, or larger order quantities.

Plug-in connectors with link for square tubes - joints with two outlets

VG3

Application: for square tubes
 Additional Info: for square tubes, link with two outlets
 Material: polyamide
 Standard-Colour: black



Order No.	For tube	Pin length	Note	Angle	Colour	PU*	MOQ**
K3D4V20KGL1800001000	20 x 20 x 1,5	42	-	0°-190°	black	100	100
K3D4V25KGL0001000	25 x 25 x 1,5	43	-	45°-195°	black	100	100
K3D4V25KGL1800001000	25 x 25 x 1,5	43	-	0°-190°	black	50	50
K3D4V25KGL0K0001000	25 x 25 x 1,5	50	o. K.	60°-300°	black	25	100
K3D4V30KGL0001000	30 x 30 x 2,0	41	-	45°-200°	black	50	50

Please note that the product illustrations are exemplary images that could deviate from the ordered/delivered products.

All of the dimensions are in mm should nothing to the contrary be stated.

*PU = Packaging Unit, SW = Spanner opening, n.w. = not detachable, o. K. = excl. The head, o. B. = excl. The collar, m. R. = with the radius, MOQ = Minimum Order Quantity.

** MOQ: Parts with MOQ, set-up costs may apply.

We exclusively sell to the trade and industry. Please note our minimum order quantities and the minimum order value per delivery. We would be pleased to send you an offer that is tailored to your needs should you require special colours, deviating dimensions, bioplastics, or larger order quantities.

Plug-in connectors for square tubes, straight

VGQ

Application: for square tubes
 Additional Info: for square tubes, straight, half-shells
 suitable for arming with steel cores
 Material: polyamide
 Standard-Colour: black



Order No.	For tube	Pin length mm	Flange	Note	Colour	PU*	MOQ**
K1D2V20K0001000	20 x 20 x 1,5	45	5,0		black	900	900
K1D2V20X2K0001	20 x 20 x 2,0	44	5,0		black	1000	1000
K1D2V25X1,5KL0001	25 x 25 x 1,5	35	5,0		black	700	700
K1D2V25X2KL0001	25 x 25 x 2,0	35	5,0		black	750	750
K1D2V30X1,5KLOB0001	30 x 30 x 1,5	61	-	o. B.	black	300	900
K1D2V30KOB0001	30 x 30 x 2,0	60	-	o. B.	black	300	900
K1D2V30KS0001	30 x 30 x 2,0	50	5,0		black	350	350

Please note that the product illustrations are exemplary images that could deviate from the ordered/delivered products.

All of the dimensions are in mm should nothing to the contrary be stated.

*PU = Packaging Unit, SW = Spanner opening, n.w. = not detachable, o. K. = excl. The head, o. B. = excl. The collar, m. R. = with the radius, MOQ = Minimum Order Quantity.

** MOQ: Parts with MOQ, set-up costs may apply.

We exclusively sell to the trade and industry. Please note our minimum order quantities and the minimum order value per delivery.
 We would be pleased to send you an offer that is tailored to your needs should you require special colours, deviating dimensions, bioplastics, or larger order quantities.

Plug-in connectors for round tubes, straight

VGR

Application: for round tubes
Additional Info: for round tubes, straight, half-shells
suitable for arming with steel cores
Material: PA
Standard-Colour: black



Order No.	For tube Ø	Pin length	Flange	Note	Colour	PU*	MOQ**
K1D2R19K0001000	19 x 1,0	43	5,0		black	1000	-
K1D2R20X1,5KL0001000	20 x 1,5	36	5,0		black	1200	-
K1D2R22X1K0001000	22 x 1,0	38	2,0		black	1000	-
K1D2R22X1,5K0001000	22 x 1,5	40	5,0		black	1000	-
K1D2R22X2K0001000	22 x 2,0	42	5,0		black	1000	-
K1D2R25X1,5KL0001000	25 x 1,5	37	5,0		black	800	-
K1D2R28X1,5K0001000	28 x 1,5	49	5,0		black	500	-
K1D2R28X2K0001000	28 x 2,0	50	5,0		black	500	-
K1D2R30X1,5K0001000	30 x 1,5	49	5,0		black	400	-
K1D2R30X2K0001000	30 x 2,0	49	5,0		black	350	-
K1D2R32X1,5K0001000	32 x 1,5	50	5,0		black	350	-
K1D2R32X2K0001000	32 x 2,0	50	5,0		black	400	-

Please note that the product illustrations are exemplary images that could deviate from the ordered/delivered products.

All of the dimensions are in mm should nothing to the contrary be stated.

*PU = Packaging Unit, SW = Spanner opening, n.w. = not detachable, o. K. = excl. The head, o. B. = excl. The collar, m. R. = with the radius, MOQ = Minimum Order Quantity.

** MOQ: Parts with MOQ, set-up costs may apply.

We exclusively sell to the trade and industry. Please note our minimum order quantities and the minimum order value per delivery.
We would be pleased to send you an offer that is tailored to your needs should you require special colours, deviating dimensions, bioplastics, or larger order quantities.

Plug-in connectors for square tubes, cross

VK1

Application: for square tubes
 Additional Info: for square tubes, cross, half-shells
 suitable for arming with steel cores
 Material: polyamide
 Standard-Colour: black



Order No.	For tube	Pin length	Colour	PU*	MOQ**
K2D4V20K0001000	20 x 20 x 1,5	36	black	350	350
K2D4V25K0001000	25 x 25 x 1,5	54	black	75	75
K2D4V30K0001000	30 x 30 x 2,0	47	black	100	100

Please note that the product illustrations are exemplary images that could deviate from the ordered/delivered products.

All of the dimensions are in mm should nothing to the contrary be stated.

*PU = Packaging Unit, SW = Spanner opening, n.w. = not detachable, o. K. = excl. The head, o. B. = excl. The collar, m. R. = with the radius, MOQ = Minimum Order Quantity.

** MOQ: Parts with MOQ, set-up costs may apply.

We exclusively sell to the trade and industry. Please note our minimum order quantities and the minimum order value per delivery.
 We would be pleased to send you an offer that is tailored to your needs should you require special colours, deviating dimensions, bioplastics, or larger order quantities.

Plug-in connectors for square tubes, cross

VK2

Application: for square tubes
 Additional Info: for square tubes, cross, one-piece
 Material: PA GF
 Standard-Colour: grey similar to RAL 7035




Order No.	For tube	Pin length	Colour	PU*	MOQ**
K2D4V20MKGF1157000	20 x 20 x 1,5	30	grey	250	250
K2D4V25X2MKGF1157000	25 x 25 x 2,0	40	grey	250	250

Please note that the product illustrations are exemplary images that could deviate from the ordered/delivered products.

All of the dimensions are in mm should nothing to the contrary be stated.

*PU = Packaging Unit, SW = Spanner opening, n.w. = not detachable, o. K. = excl. The head, o. B. = excl. The collar, m. R. = with the radius, MOQ = Minimum Order Quantity.

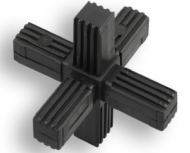
** MOQ: Parts with MOQ, set-up costs may apply.

 We exclusively sell to the trade and industry. Please note our minimum order quantities and the minimum order value per delivery. We would be pleased to send you an offer that is tailored to your needs should you require special colours, deviating dimensions, bioplastics, or larger order quantities.

Plug-in connectors for square tubes, star

VS1

Application: for square tubes
 Additional Info: for square tubes, stars, half-shells
 suitable for arming with steel cores
 Material: polyamide
 Standard-Colour: black




Order No.	For tube	Pin length	Colour	PU*	MOQ**
K3D6V20K0001000	20 x 20 x 1,5	36	black	200	200
K3D6V25K0001000	25 x 25 x 1,5	54	black	50	100
K3D6V30K0001000	30 x 30 x 2,0	47	black	50	100

Please note that the product illustrations are exemplary images that could deviate from the ordered/delivered products.

All of the dimensions are in mm should nothing to the contrary be stated.

*PU = Packaging Unit, SW = Spanner opening, n.w. = not detachable, o. K. = excl. The head, o. B. = excl. The collar, m. R. = with the radius, MOQ = Minimum Order Quantity.

** MOQ: Parts with MOQ, set-up costs may apply.

 We exclusively sell to the trade and industry. Please note our minimum order quantities and the minimum order value per delivery.
 We would be pleased to send you an offer that is tailored to your needs should you require special colours, deviating dimensions, bioplastics, or larger order quantities.

Plug-in connectors for square tubes, star

VS2

Application: for square tubes
 Additional Info: for square tubes, stars, one-piece
 Material: PA GF
 Standard-Colour: grey similar to RAL 7035



Order No.	For tube	Pin length	Colour	PU*	MOQ**
K3D6V20MKGf1157000	20 x 20 x 1,5	30	grey	150	150

Please note that the product illustrations are exemplary images that could deviate from the ordered/delivered products.

All of the dimensions are in mm should nothing to the contrary be stated.

*PU = Packaging Unit, SW = Spanner opening, n.w. = not detachable, o. K. = excl. The head, o. B. = excl. The collar, m. R. = with the radius, MOQ = Minimum Order Quantity.

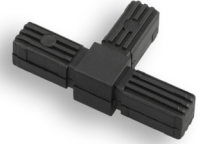
** MOQ: Parts with MOQ, set-up costs may apply.

We exclusively sell to the trade and industry. Please note our minimum order quantities and the minimum order value per delivery. We would be pleased to send you an offer that is tailored to your needs should you require special colours, deviating dimensions, bioplastics, or larger order quantities.

Plug-in connectors for square tubes, T-piece

VT1

Application: for square tubes
 Additional Info: for square tubes, T-pieces, half-shells
 suitable for arming with steel cores
 Material: polyamide
 Standard-Colour: black



Order No.	For tube	Pin length	Colour	PU*	MOQ**
K2D3V20K0001000	20 x 20 x 1,5	36	black	350	350
K2D3V25K0001000	25 x 25 x 1,5	51	black	150	150
K2D3V30K0001000	30 x 30 x 2,0	47	black	100	100

Please note that the product illustrations are exemplary images that could deviate from the ordered/delivered products.

All of the dimensions are in mm should nothing to the contrary be stated.

*PU = Packaging Unit, SW = Spanner opening, n.w. = not detachable, o. K. = excl. The head, o. B. = excl. The collar, m. R. = with the radius, MOQ = Minimum Order Quantity.

** MOQ: Parts with MOQ, set-up costs may apply.

We exclusively sell to the trade and industry. Please note our minimum order quantities and the minimum order value per delivery.
 We would be pleased to send you an offer that is tailored to your needs should you require special colours, deviating dimensions, bioplastics, or larger order quantities.

Plug-in connectors for square tubes, T-piece

VT2

Application: for square tubes
 Additional Info: for square tubes, T-pieces, one-piece
 Material: PA GF
 Standard-Colour: grey similar to RAL 7035



Order No.	For tube	Pin length	Colour	PU*	MOQ**
K2D3V20MKGF1157000	20 x 20 x 1,5	30	grey	350	350
K2D3V25X2MKGF1157000	25 x 25 x 2,0	40	grey	300	300

Please note that the product illustrations are exemplary images that could deviate from the ordered/delivered products.

All of the dimensions are in mm should nothing to the contrary be stated.

*PU = Packaging Unit, SW = Spanner opening, n.w. = not detachable, o. K. = excl. The head, o. B. = excl. The collar, m. R. = with the radius, MOQ = Minimum Order Quantity.

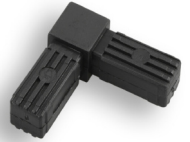
** MOQ: Parts with MOQ, set-up costs may apply.

We exclusively sell to the trade and industry. Please note our minimum order quantities and the minimum order value per delivery. We would be pleased to send you an offer that is tailored to your needs should you require special colours, deviating dimensions, bioplastics, or larger order quantities.

Plug-in connectors

Application: for square tubes
 Additional Info: for square tubes with right angles, half-shells suitable for arming with steel cores
 Material: polyamide
 Standard-Colour: black

VW1



Order No.	For tube	Pin length	Note	Colour	PU*	MOQ**
K2D2V20K0001000	20 x 20 x 1,5	36	-	black	500	500
K2D2V20KOK0001000	20 x 20 x 1,5	37	o. K.	black	750	750
K2D2V20X2K0001000	20 x 20 x 2,0	36	-	black	750	750
K2D2V25K0001000	25 x 25 x 1,5	52	-	black	250	250
K2D2V25KOK0001000	25 x 25 x 1,5	56	o. K.	black	350	350
K2D2V25KR0001000	25 x 25 x 1,5	55	m. R.	black	350	350
K2D2V30K0001000	30 x 30 x 2,0	47	-	black	150	150
K2D2V30KOK0001000	30 x 30 x 2,0	47	o. K.	black	200	200

Please note that the product illustrations are exemplary images that could deviate from the ordered/delivered products.

All of the dimensions are in mm should nothing to the contrary be stated.

*PU = Packaging Unit, SW = Spanner opening, n.w. = not detachable, o. K. = excl. The head, o. B. = excl. The collar, m. R. = with the radius, MOQ = Minimum Order Quantity.

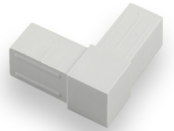
** MOQ: Parts with MOQ, set-up costs may apply.

We exclusively sell to the trade and industry. Please note our minimum order quantities and the minimum order value per delivery. We would be pleased to send you an offer that is tailored to your needs should you require special colours, deviating dimensions, bioplastics, or larger order quantities.

Plug-in connectors

Application: for square tubes
 Additional Info: for square tubes with right angles, one-piece
 Material: PA GF
 Standard-Colour: grey similar to RAL 7035

VW2



Order No.	For tube	Pin length	Colour	PU*	MOQ**
K2D2V20MKGf1157000	20 x 20 x 1,5	30	grey	500	500
K2D2V25X2MKGf1157000	25 x 25 x 2,0	40	grey	250	250

Please note that the product illustrations are exemplary images that could deviate from the ordered/delivered products.

All of the dimensions are in mm should nothing to the contrary be stated.

*PU = Packaging Unit, SW = Spanner opening, n.w. = not detachable, o. K. = excl. The head, o. B. = excl. The collar, m. R. = with the radius, MOQ = Minimum Order Quantity.

** MOQ: Parts with MOQ, set-up costs may apply.

We exclusively sell to the trade and industry. Please note our minimum order quantities and the minimum order value per delivery. We would be pleased to send you an offer that is tailored to your needs should you require special colours, deviating dimensions, bioplastics, or larger order quantities.