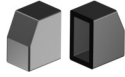


4 Sliding elements

Glide caps, shell/saddle feet glides, angle glides, plates/glides for flat irons, stacking protection elements, and furniture glides/device feet



AG
Page: 2



O
Page: 3



OO
Page: 4



OOS 1
Page: 5



OOS 2
Page: 6



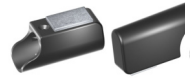
OOS 3
Page: 7



OR
Page: 8



ORS 1
Page: 9



ORS 2
Page: 10



ORS 3
Page: 11



X
Page: 12



X2-XF2 1
Page: 13



X2-XF2 2
Page: 14



XC
Page: 15



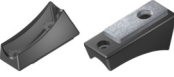
XF
Page: 16



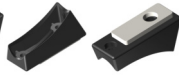
XG 1
Page: 17



XG 2
Page: 18



XGF
Page: 19



XGS
Page: 20



XS
Page: 21



XT
Page: 22



XW
Page: 23



YSG 1
Page: 24



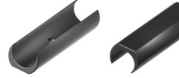
W
Page: 25



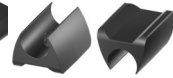
W-12
Page: 26



W-12 1
Page: 27



WA
Page: 28



WK
Page: 29



WKF
Page: 30



WSP 1
Page: 31



WSP 2
Page: 32



XR
Page: 33



MF
Page: 34



MH
Page: 35



Z
Page: 36



ZF
Page: 37



ZL
Page: 38



ZV
Page: 39



P
Page: 40



Q
Page: 41



YSG 2
Page: 42



QFS
Page: 44



QS
Page: 45



QSF
Page: 46



QSM
Page: 47



PFE
Page: 48



PFE 1
Page: 49



PFH
Page: 50



PFN
Page: 51



PR
Page: 52



YS
Page: 53



YS2
Page: 54



V
Page: 55

Glides for round tubes

Application: furniture glides / device feet
Material: polypropylene
Standard-Colour: black



Order No.	Tube outside Ø	Height H	Depth T	Outside Ø d	Colour	PU*	MOQ**
501006000001000	60,0	23,0	20,0	81,5	black	500	-

Please note that the product illustrations are exemplary images that could deviate from the ordered/delivered products.

All of the dimensions are in mm should nothing to the contrary be stated.

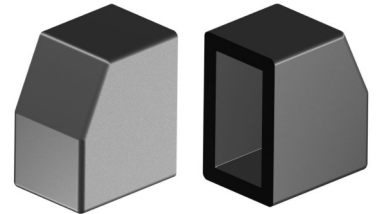
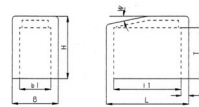
*PU = Packaging Unit, SW = Spanner opening, n.w. = not detachable, o. K. = excl. The head, o. B. = excl. The collar, m. R. = with the radius, MOQ = Minimum Order Quantity.

** MOQ: Parts with MOQ, set-up costs may apply.

We exclusively sell to the trade and industry. Please note our minimum order quantities and the minimum order value per delivery. We would be pleased to send you an offer that is tailored to your needs should you require special colours, deviating dimensions, bioplastics, or larger order quantities.

Glide caps for swivel base tubes

Application: for rectangular and square tubes
 Additional Info: optionally available with welded felt
 Material: polyethylene
 Standard-Colour: black



Order No.	Tube outside Ø	Outside dimension	Inside dimension	Depth	Height	Wall thickness	Colour	PU*	MOQ**
		L x B	l1 x b1	T	H	d			
083015150001000	15x15	21,3x19,4	15,1x14,6	24,5	31,7	4,5	black	1000	1000
083020150001000	20x15	26,7x19,3	19,7x15,0	19,0	24,4	4,7	black	1000	1000
083030150001000	30x15	37,8x23,5	29,8x14,7	23,5	31,6	3,9	black	500	1000
083040200001000	40x20	48,2x27,9	39,8x19,6	31,3	38,2	2,8	black	500	-

Please note that the product illustrations are exemplary images that could deviate from the ordered/delivered products.

All of the dimensions are in mm should nothing to the contrary be stated.

*PU = Packaging Unit, SW = Spanner opening, n.w. = not detachable, o. K. = excl. The head, o. B. = excl. The collar, m. R. = with the radius, MOQ = Minimum Order Quantity.

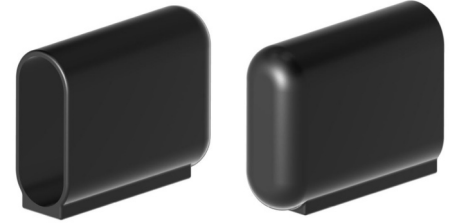
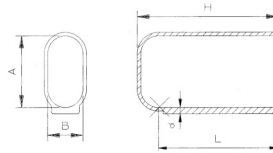
** MOQ: Parts with MOQ, set-up costs may apply.

We exclusively sell to the trade and industry. Please note our minimum order quantities and the minimum order value per delivery. We would be pleased to send you an offer that is tailored to your needs should you require special colours, deviating dimensions, bioplastics, or larger order quantities.

Caps for oval tubes

Application: for oval tubes
Material: polyethylene
Standard-Colour: black

00



Order No.	Tube outside dimension A x B	Total length H	Working depth L	Bottom thickness d	Colour	PU*	MOQ**
083330150001000	30x15	60	52	2,7	black	700	700
083335200001000	35x20	60	52	2,7	black	500	500
083338200001000	38x20	60	52	2,7	black	450	450
083340200001000	40x20	60	52	2,7	black	400	400
083350200001000	50x20	70	60	2,7-5	black	300	300
083350250001000	50x25	70	60	2,7-5	black	250	250
083350300001000	50x30	70	60	2,7-5	black	200	200
083360300001000	60x30	70	60	2,7-5	black	150	150

Please note that the product illustrations are exemplary images that could deviate from the ordered/delivered products.

All of the dimensions are in mm should nothing to the contrary be stated.

*PU = Packaging Unit, SW = Spanner opening, n.w. = not detachable, o. K. = excl. The head, o. B. = excl. The collar, m. R. = with the radius, MOQ = Minimum Order Quantity.

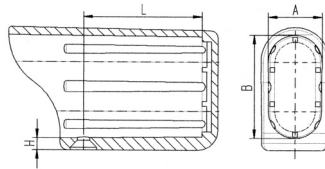
** MOQ: Parts with MOQ, set-up costs may apply.

We exclusively sell to the trade and industry. Please note our minimum order quantities and the minimum order value per delivery. We would be pleased to send you an offer that is tailored to your needs should you require special colours, deviating dimensions, bioplastics, or larger order quantities.

Glide caps for oval tubes

Application: for oval tubes
Material: polypropylene
Standard-Colour: black

OOS 1



Order No.	For flat oval tube outside	Height	Hole spacing	Colour	PU*	MOQ**
	A x B	H	L			
083638200001000	38x20	5,0	48,0	black	500	500
083640200001000	40x20	5,0	48,0	black	500	-

Please note that the product illustrations are exemplary images that could deviate from the ordered/delivered products.

All of the dimensions are in mm should nothing to the contrary be stated.

*PU = Packaging Unit, SW = Spanner opening, n.w. = not detachable, o. K. = excl. The head, o. B. = excl. The collar, m. R. = with the radius, MOQ = Minimum Order Quantity.

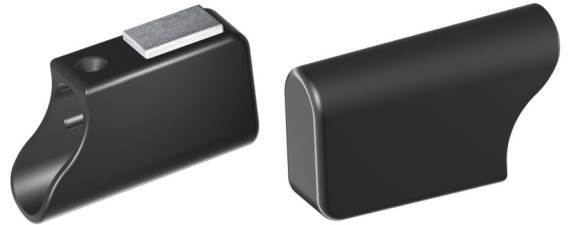
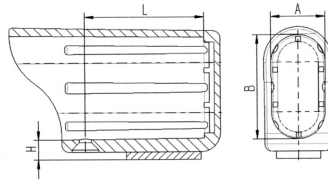
** MOQ: Parts with MOQ, set-up costs may apply.

We exclusively sell to the trade and industry. Please note our minimum order quantities and the minimum order value per delivery. We would be pleased to send you an offer that is tailored to your needs should you require special colours, deviating dimensions, bioplastics, or larger order quantities.

Glide caps for oval tubes with felt slide base

OOS 2

Application: for oval tubes
Material: polypropylene
Standard-Colour: black



Order No.	For flat oval tube outside A x B	Height H	Hole spacing L	Colour	PU*	MOQ**
083738200001000	38x20	9,0	48,0	black	400	400
083740200001000	40x20	9,0	48,0	black	400	400

Please note that the product illustrations are exemplary images that could deviate from the ordered/delivered products.

All of the dimensions are in mm should nothing to the contrary be stated.

*PU = Packaging Unit, SW = Spanner opening, n.w. = not detachable, o. K. = excl. The head, o. B. = excl. The collar, m. R. = with the radius, MOQ = Minimum Order Quantity.

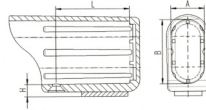
** MOQ: Parts with MOQ, set-up costs may apply.

We exclusively sell to the trade and industry. Please note our minimum order quantities and the minimum order value per delivery. We would be pleased to send you an offer that is tailored to your needs should you require special colours, deviating dimensions, bioplastics, or larger order quantities.

Glide cabs for oval tubes with uncoloured plastic slide base

OOS 3

Application: for oval tubes
Material: polypropylene
Standard-Colour: black



Order No.	For flat oval tube outside	Height	Hole spacing	Colour	PU*	MOQ**
	A x B	H	L			
084738200001000	38x20	8,0	48,0	black	400	400
084740200001000	40x20	8,0	48,0	black	100	400

Please note that the product illustrations are exemplary images that could deviate from the ordered/delivered products.

All of the dimensions are in mm should nothing to the contrary be stated.

*PU = Packaging Unit, SW = Spanner opening, n.w. = not detachable, o. K. = excl. The head, o. B. = excl. The collar, m. R. = with the radius, MOQ = Minimum Order Quantity.

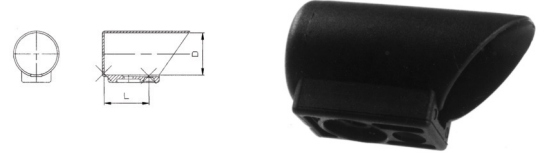
** MOQ: Parts with MOQ, set-up costs may apply.

We exclusively sell to the trade and industry. Please note our minimum order quantities and the minimum order value per delivery. We would be pleased to send you an offer that is tailored to your needs should you require special colours, deviating dimensions, bioplastics, or larger order quantities.

Glide caps for round tubes

Application: for round tubes
Material: polyamide
Standard-Colour: black

OR



Order No.	Tube outside \varnothing	Distance of tube end to fastening hole	Colour	PU*	MOQ**
	D	L			
083500250001000	25	39	black	450	450
083500300001000	30	29	black	300	300
083500320001000	32	39	black	300	300
083500350001000	35	39	black	200	200

Please note that the product illustrations are exemplary images that could deviate from the ordered/delivered products.

All of the dimensions are in mm should nothing to the contrary be stated.

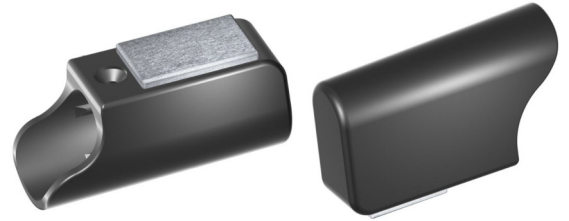
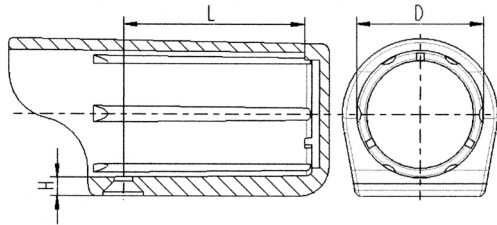
*PU = Packaging Unit, SW = Spanner opening, n.w. = not detachable, o. K. = excl. The head, o. B. = excl. The collar, m. R. = with the radius, MOQ = Minimum Order Quantity.

** MOQ: Parts with MOQ, set-up costs may apply.

We exclusively sell to the trade and industry. Please note our minimum order quantities and the minimum order value per delivery. We would be pleased to send you an offer that is tailored to your needs should you require special colours, deviating dimensions, bioplastics, or larger order quantities.

Glide caps for round tubes

Application: for round tubes
Material: polypropylene
Standard-Colour: black



Order No.	Tube outside Ø D	Height H	Hole spacing L	Colour	PU*	MOQ**
083800220001000	22	5,0	48,0	black	500	1000
083800250001000	25	5,0	48,0	black	500	-
083800280001000	28	5,0	48,0	black	500	-
083800300001000	30	5,0	48,0	black	500	-
083800320001000	32	5,0	48,0	black	500	-
083800350001000	35	5,0	48,0	black	250	500
083800380001000	38	5,0	48,0	black	250	500

Please note that the product illustrations are exemplary images that could deviate from the ordered/delivered products.

All of the dimensions are in mm should nothing to the contrary be stated.

*PU = Packaging Unit, SW = Spanner opening, n.w. = not detachable, o. K. = excl. The head, o. B. = excl. The collar, m. R. = with the radius, MOQ = Minimum Order Quantity.

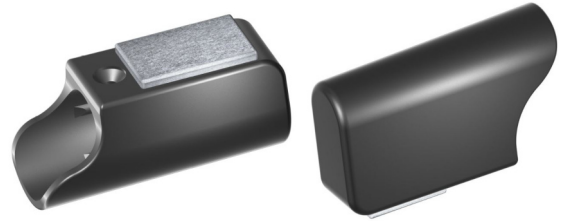
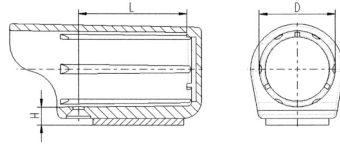
** MOQ: Parts with MOQ, set-up costs may apply.

We exclusively sell to the trade and industry. Please note our minimum order quantities and the minimum order value per delivery. We would be pleased to send you an offer that is tailored to your needs should you require special colours, deviating dimensions, bioplastics, or larger order quantities.

Glide caps for round tubes with felt slide base

ORS 2

Application: for round tubes
Material: polypropylene
Standard-Colour: black



Order No.	Tube outside Ø	Height	Hole spacing	Colour	PU*	MOQ**
	D	H	L			
083900220001000	22	9,0	48,0	black	100	-
083900250001000	25	9,0	48,0	black	100	-
083900280001000	28	9,0	48,0	black	400	400
083900300001000	30	9,0	48,0	black	100	-
083900320001000	32	9,0	48,0	black	100	-
083900350001000	35	9,0	48,0	black	100	300
083900380001000	38	9,0	48,0	black	100	300

Please note that the product illustrations are exemplary images that could deviate from the ordered/delivered products.

All of the dimensions are in mm should nothing to the contrary be stated.

*PU = Packaging Unit, SW = Spanner opening, n.w. = not detachable, o. K. = excl. The head, o. B. = excl. The collar, m. R. = with the radius, MOQ = Minimum Order Quantity.

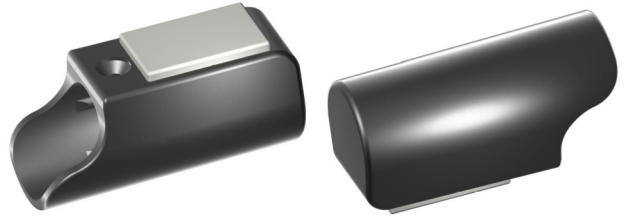
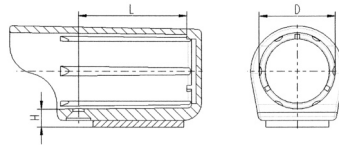
** MOQ: Parts with MOQ, set-up costs may apply.

We exclusively sell to the trade and industry. Please note our minimum order quantities and the minimum order value per delivery. We would be pleased to send you an offer that is tailored to your needs should you require special colours, deviating dimensions, bioplastics, or larger order quantities.

Glide caps for round tubes with uncoloured plastic slide base

ORS 3

Application: for round tubes
Material: polypropylene
Standard-Colour: black



Order No.	Tube outside Ø D	Height H	Hole spacing L	Colour	PU*	MOQ**
084800220001000	22	8,0	48,0	black	500	1000
084800250001000	25	8,0	48,0	black	500	-
084800280001000	28	8,0	48,0	black	500	500
084800300001000	30	8,0	48,0	black	500	500
084800320001000	32	8,0	48,0	black	500	1000
084800350001000	35	8,0	48,0	black	100	600
084800380001000	38	8,0	48,0	black	100	600

Please note that the product illustrations are exemplary images that could deviate from the ordered/delivered products.

All of the dimensions are in mm should nothing to the contrary be stated.

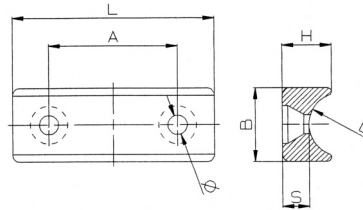
*PU = Packaging Unit, SW = Spanner opening, n.w. = not detachable, o. K. = excl. The head, o. B. = excl. The collar, m. R. = with the radius, MOQ = Minimum Order Quantity.

** MOQ: Parts with MOQ, set-up costs may apply.

We exclusively sell to the trade and industry. Please note our minimum order quantities and the minimum order value per delivery. We would be pleased to send you an offer that is tailored to your needs should you require special colours, deviating dimensions, bioplastics, or larger order quantities.

Saddle feet

Application: shell / saddle feet glides
Material: polyethylene
Standard-Colour: black



Order No.	Article	For tube outside \varnothing	Length	Width	Height	Height of supports	Countersunk hole \varnothing	Abstand / Spacing	Colour	PU*	MOQ**
		D	L	B	H	S	D1	A			
092000180001000	X 18	18-22	53,5	19,8	13,6	7,0	5,2 (2x)	33,5	black	1000	-
092300220001000	X 22	22-25	49,8	23,0	10,7	7,0	5,8 (1x)	zentriert / centred	black	1000	-
092000280001000	X 28	28-30	44,8	24,8	11,8	7,7	5,2 (2x)	22,5	black	1000	-
092100400001000	X 40	40	49,5	22,6	8,4	6,3	5,5 (1x)	zentriert / centred	black	1000	-
092000450001000	X 45	45	46,5	45,8	17,8	7,8	6,0 (2x)	22,5	black	500	-

Please note that the product illustrations are exemplary images that could deviate from the ordered/delivered products.

All of the dimensions are in mm should nothing to the contrary be stated.

*PU = Packaging Unit, SW = Spanner opening, n.w. = not detachable, o. K. = excl. The head, o. B. = excl. The collar, m. R. = with the radius, MOQ = Minimum Order Quantity.

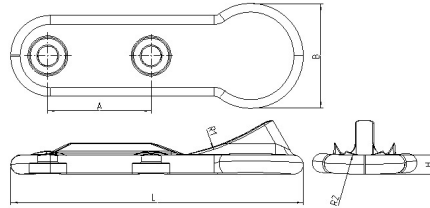
** MOQ: Parts with MOQ, set-up costs may apply.

We exclusively sell to the trade and industry. Please note our minimum order quantities and the minimum order value per delivery. We would be pleased to send you an offer that is tailored to your needs should you require special colours, deviating dimensions, bioplastics, or larger order quantities.

Saddle feet

Application: shell / saddle feet glides
 Additional Info: optionally available with welded felt
 Material: polyamide
 Standard-Colour: black

X2-XF2 1



Order No.	For tube outside Ø	Length	Width	Height	Spacing	Felt height	Hole Ø mm	Colour	PU*	MOQ**
		L	B	H	A					
093000200001000	20-25	77,1	27,4	5,0	27,4	-	5,3	black	1000	2000
093500200001001	20-25	77,1	27,4	5,0	27,4	4,0	5,3	black	100	2000

Please note that the product illustrations are exemplary images that could deviate from the ordered/delivered products.

All of the dimensions are in mm should nothing to the contrary be stated.

*PU = Packaging Unit, SW = Spanner opening, n.w. = not detachable, o. K. = excl. The head, o. B. = excl. The collar, m. R. = with the radius, MOQ = Minimum Order Quantity.

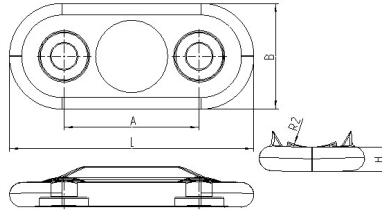
** MOQ: Parts with MOQ, set-up costs may apply.

We exclusively sell to the trade and industry. Please note our minimum order quantities and the minimum order value per delivery. We would be pleased to send you an offer that is tailored to your needs should you require special colours, deviating dimensions, bioplastics, or larger order quantities.

Saddle feet

Application: shell / saddle feet glides
 Additional Info: optionally available with welded felt
 Material: polyamide
 Standard-Colour: black

X2-XF2 2



Order No.	Length L	Width M	Height H	Spacing A	Felt height	Hole Ø	Colour	PU*	MOQ**
092000200001000	49,4	21,4	5,0	27,4		5,3	black	1000	2000
092500200001000	49,4	21,4	5,0	27,4	4,0	5,3	black	1000	2000

Please note that the product illustrations are exemplary images that could deviate from the ordered/delivered products.

All of the dimensions are in mm should nothing to the contrary be stated.

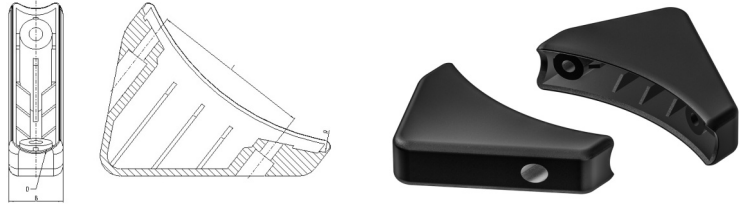
*PU = Packaging Unit, SW = Spanner opening, n.w. = not detachable, o. K. = excl. The head, o. B. = excl. The collar, m. R. = with the radius, MOQ = Minimum Order Quantity.

** MOQ: Parts with MOQ, set-up costs may apply.

We exclusively sell to the trade and industry. Please note our minimum order quantities and the minimum order value per delivery. We would be pleased to send you an offer that is tailored to your needs should you require special colours, deviating dimensions, bioplastics, or larger order quantities.

Saddle feet for curved oval tubes

Application: shell / saddle feet glides
Material: polyamide
Standard-Colour: black



Order No.	For tube outside Ø	Width	Spacing	Colour	PU*	MOQ**
	D	B	L			
932170070001000	38,0 x 20,0	23,0	68,0	black	100	-

Please note that the product illustrations are exemplary images that could deviate from the ordered/delivered products.

All of the dimensions are in mm should nothing to the contrary be stated.

*PU = Packaging Unit, SW = Spanner opening, n.w. = not detachable, o. K. = excl. The head, o. B. = excl. The collar, m. R. = with the radius, MOQ = Minimum Order Quantity.

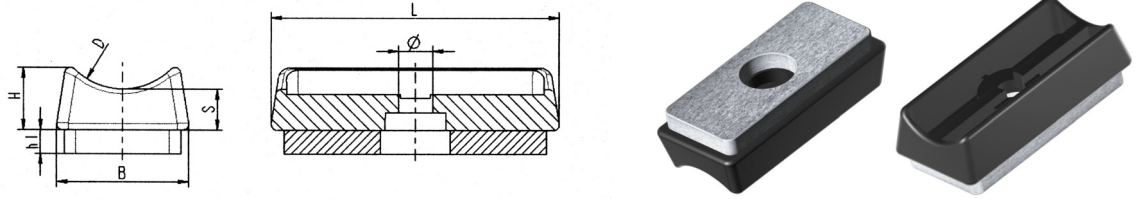
** MOQ: Parts with MOQ, set-up costs may apply.

We exclusively sell to the trade and industry. Please note our minimum order quantities and the minimum order value per delivery. We would be pleased to send you an offer that is tailored to your needs should you require special colours, deviating dimensions, bioplastics, or larger order quantities.

Saddle feet with felt slide base

XF

Application: shell / saddle feet glides
Material: polyethylene
Standard-Colour: black



Order No.	Article	For tube outside Ø	Hole Ø	Length	Width	Height of supports	Height	Felt height	Colour	PU*	MOQ**
			D1	L	B	S	H	H1			
092700220001000	XF 22	22-25	5,8	49,8	23,0	7,0	10,7	4,0	black	500	-

Please note that the product illustrations are exemplary images that could deviate from the ordered/delivered products.

All of the dimensions are in mm should nothing to the contrary be stated.

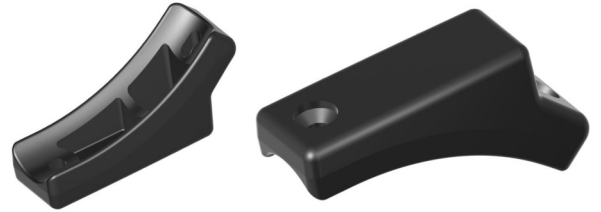
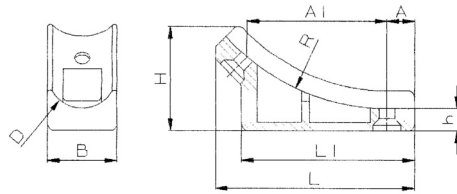
*PU = Packaging Unit, SW = Spanner opening, n.w. = not detachable, o. K. = excl. The head, o. B. = excl. The collar, m. R. = with the radius, MOQ = Minimum Order Quantity.

** MOQ: Parts with MOQ, set-up costs may apply.

We exclusively sell to the trade and industry. Please note our minimum order quantities and the minimum order value per delivery. We would be pleased to send you an offer that is tailored to your needs should you require special colours, deviating dimensions, bioplastics, or larger order quantities.

Saddle feet

Application: shell / saddle feet glides
Material: polyethylene
Standard-Colour: black



Order No.	Tube outside \varnothing	Length	Length	Width	Height	Height	Radius	Spacing	Colour	PU*	MOQ**
	D	L	L1	B	H	h	R	A / A1			
093000250001000	25	72,5	63,0	25,5	38,0	8,3	80,0	10,0/51,0	black	500	-

Please note that the product illustrations are exemplary images that could deviate from the ordered/delivered products.

All of the dimensions are in mm should nothing to the contrary be stated.

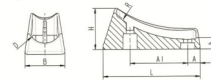
*PU = Packaging Unit, SW = Spanner opening, n.w. = not detachable, o. K. = excl. The head, o. B. = excl. The collar, m. R. = with the radius, MOQ = Minimum Order Quantity.

** MOQ: Parts with MOQ, set-up costs may apply.

We exclusively sell to the trade and industry. Please note our minimum order quantities and the minimum order value per delivery. We would be pleased to send you an offer that is tailored to your needs should you require special colours, deviating dimensions, bioplastics, or larger order quantities.

Saddle feet

Application: shell / saddle feet glides
Material: polyethylene
Standard-Colour: black



Order No.	Tube outside \varnothing	Length L	Width W	Height H	Height H1	Radius R	Spacing S	Spacing S1	Colour	PU*	MOQ**
093200220001000	22	71,0	27,0	25,8	6,5	90,0	9,5	42,3	black	1000	-
093200250001000	25	72,5	30,0	30,2	8,3	80,0	9,5	42,3	black	500	-
093000320001000	32	75,0	32,5	30,0	8,3	96,0	12,0	28,0	black	1000	-
093000380001000	38	75,0	32,0	30,0	8,3	96,0	12,0	28,0	black	500	500

Please note that the product illustrations are exemplary images that could deviate from the ordered/delivered products.

All of the dimensions are in mm should nothing to the contrary be stated.

*PU = Packaging Unit, SW = Spanner opening, n.w. = not detachable, o. K. = excl. The head, o. B. = excl. The collar, m. R. = with the radius, MOQ = Minimum Order Quantity.

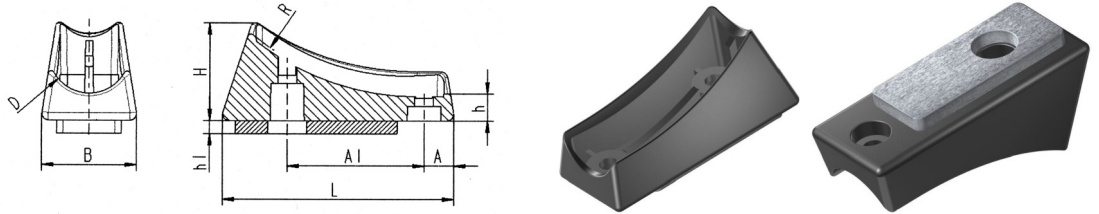
** MOQ: Parts with MOQ, set-up costs may apply.

We exclusively sell to the trade and industry. Please note our minimum order quantities and the minimum order value per delivery. We would be pleased to send you an offer that is tailored to your needs should you require special colours, deviating dimensions, bioplastics, or larger order quantities.

Saddle feet with felt slide base

XGF

Application: shell / saddle feet glides
Material: polyethylene
Standard-Colour: black



Order No.	Tube outside ø D	Length L	Width W	Height h1 in m	Radius R	Spacing S mm	Spacing S1 mm	Colour	PU*	MOQ**
093700220001001	22	71,0	27,0	25,8/6,5	90,0	9,5	42,5	black	200	-
093700250001000	25	72,5	30,0	30,2/8,3	80,0	9,5	42,3	black	500	-

Please note that the product illustrations are exemplary images that could deviate from the ordered/delivered products.

All of the dimensions are in mm should nothing to the contrary be stated.

*PU = Packaging Unit, SW = Spanner opening, n.w. = not detachable, o. K. = excl. The head, o. B. = excl. The collar, m. R. = with the radius, MOQ = Minimum Order Quantity.

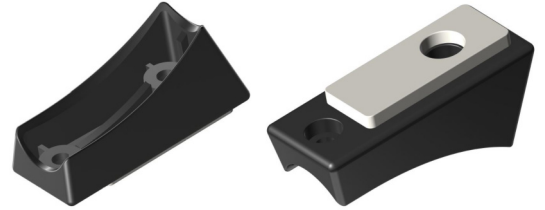
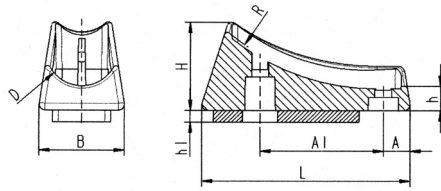
** MOQ: Parts with MOQ, set-up costs may apply.

We exclusively sell to the trade and industry. Please note our minimum order quantities and the minimum order value per delivery. We would be pleased to send you an offer that is tailored to your needs should you require special colours, deviating dimensions, bioplastics, or larger order quantities.

Saddle feet with uncoloured plastic slide base

XGS

Application: shell / saddle feet glides
Material: polyethylene
Standard-Colour: black



Order No.	Tube outside \varnothing D	Length L	Width W	Height H	Height h	Radius R	Spacing S	Spacing S/S1	Colour	PU*	MOQ**
093800220001000	22	71,0	27,0	25,8	6,5	90,0	9,5	42,3	black	1000	1000
093800250001000	25	72,5	30,0	30,2	8,3	80,0	9,5	42,3	black	100	-

Please note that the product illustrations are exemplary images that could deviate from the ordered/delivered products.

All of the dimensions are in mm should nothing to the contrary be stated.

*PU = Packaging Unit, SW = Spanner opening, n.w. = not detachable, o. K. = excl. The head, o. B. = excl. The collar, m. R. = with the radius, MOQ = Minimum Order Quantity.

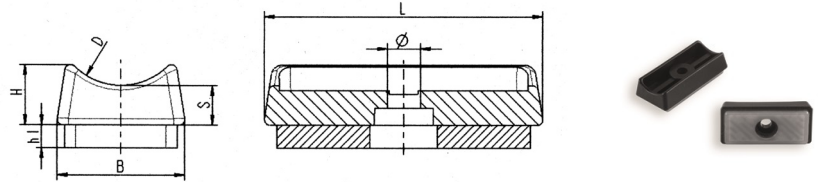
** MOQ: Parts with MOQ, set-up costs may apply.

We exclusively sell to the trade and industry. Please note our minimum order quantities and the minimum order value per delivery.
We would be pleased to send you an offer that is tailored to your needs should you require special colours, deviating dimensions, bioplastics, or larger order quantities.

Saddle feet with uncoloured plastic slide base

XS

Application: shell / saddle feet glides
Material: polyethylene
Standard-Colour: black



Order No.	Article	For tube outside Ø D	Hole Ø D1	Length L	Width W	Height H	Support s	Plate h1	Colour	PU*	MOQ**
092800220001000	XS 22	22-25	5,8	7,0	49,8	23,0	7,0	3,3	black	1000	-

Please note that the product illustrations are exemplary images that could deviate from the ordered/delivered products.

All of the dimensions are in mm should nothing to the contrary be stated.

*PU = Packaging Unit, SW = Spanner opening, n.w. = not detachable, o. K. = excl. The head, o. B. = excl. The collar, m. R. = with the radius, MOQ = Minimum Order Quantity.

** MOQ: Parts with MOQ, set-up costs may apply.

We exclusively sell to the trade and industry. Please note our minimum order quantities and the minimum order value per delivery. We would be pleased to send you an offer that is tailored to your needs should you require special colours, deviating dimensions, bioplastics, or larger order quantities.

Saddle feet with stack protection

Application: shell / saddle feet glides
Material: polyethylene
Standard-Colour: black



Order No.	For tube Ø mm	Height H	Hole Ø	Colour	PU*	MOQ**
098070340001000	25	8,5	5,5	black	250	-

Please note that the product illustrations are exemplary images that could deviate from the ordered/delivered products.

All of the dimensions are in mm should nothing to the contrary be stated.

*PU = Packaging Unit, SW = Spanner opening, n.w. = not detachable, o. K. = excl. The head, o. B. = excl. The collar, m. R. = with the radius, MOQ = Minimum Order Quantity.

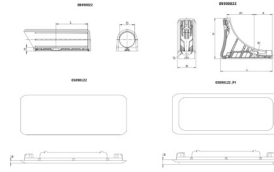
** MOQ: Parts with MOQ, set-up costs may apply.

We exclusively sell to the trade and industry. Please note our minimum order quantities and the minimum order value per delivery. We would be pleased to send you an offer that is tailored to your needs should you require special colours, deviating dimensions, bioplastics, or larger order quantities.

Gliders for chairs with exchangeable sliding layers

XW

Application: for round tubes
 Additional Info: Usable with sliding layer out of felt or PP, for an easy click into the glider. Sliding layers to be ordered separately!
 Important: The gliders aren't allowed to be used without the sliding layers in no case!!!
 Material: PP
 Standard-Colour: black



Order No.	Tube outside- Ø D	Length L	Width B	Height H	Height h	Radius R	Spacing A/A1	Item	Colour	PU*	MOQ**
093900220001000	22	90	32	70	5,7	72	31,5/47,5	Schalengleiter ohne Gleiteinsatz	black	500	-
084900220001000	22	48			5,7			Gleitkappe ohne Gleiteinsatz	black	500	-
050901220004000				2				Gleiteinsatz mit PP	nature	500	-
050901220001/FI				4				Gleiteinsatz mit Filz	black	500	-

Please note that the product illustrations are exemplary images that could deviate from the ordered/delivered products.

All of the dimensions are in mm should nothing to the contrary be stated.

*PU = Packaging Unit, SW = Spanner opening, n.w. = not detachable, o. K. = excl. The head, o. B. = excl. The collar, m. R. = with the radius, MOQ = Minimum Order Quantity.

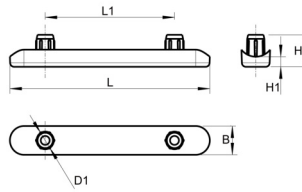
** MOQ: Parts with MOQ, set-up costs may apply.

We exclusively sell to the trade and industry. Please note our minimum order quantities and the minimum order value per delivery. We would be pleased to send you an offer that is tailored to your needs should you require special colours, deviating dimensions, bioplastics, or larger order quantities.

Long glides for round tubes

Application: shell / saddle feet glides
 Additional Info: optionally available with welded felt
 Material: polyamide / felt
 Standard-Colour: black, uncoloured

YSG 1



Order No.	For tube outside Ø mm	Length L mm	Width W mm	Height H1 mm	Pin spacing L1 mm	Pin Ø D1	Height H mm	Felt height mm	Colour	PU*	MOQ**
094400180001000	18-22	99,0	14,2	5,0	64,0	9,3	16,0	-	black	1000	2000
094400180004000	18-22	99,0	14,2	5,0	64,0	9,3	16,0	-	nature	1000	2000
094400220001000	22-25	99,0	17,0	5,0	64,0	9,3	16,0	-	black	500	-
094400220004000	22-25	99,0	17,0	5,0	64,0	9,3	16,0	-	nature	1000	1000
094400180001/FI	18-22	99,0	14,2	5,0	64,0	9,3	16,0	2,0	black	1000	-
094400180004/FI	18-22	99,0	14,2	5,0	64,0	9,3	16,0	2,0	nature	1000	2000
094400220001/FI	22-25	99,0	17,0	5,0	64,0	9,3	16,0	2,0	black	500	1000
094400220004/FI	22-25	99,0	17,0	5,0	64,0	9,3	16,0	2,0	nature	200	1000

Please note that the product illustrations are exemplary images that could deviate from the ordered/delivered products.

All of the dimensions are in mm should nothing to the contrary be stated.

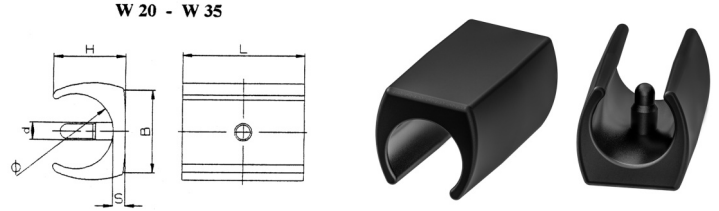
*PU = Packaging Unit, SW = Spanner opening, n.w. = not detachable, o. K. = excl. The head, o. B. = excl. The collar, m. R. = with the radius, MOQ = Minimum Order Quantity.

** MOQ: Parts with MOQ, set-up costs may apply.

We exclusively sell to the trade and industry. Please note our minimum order quantities and the minimum order value per delivery. We would be pleased to send you an offer that is tailored to your needs should you require special colours, deviating dimensions, bioplastics, or larger order quantities.

Clamping (snap on) saddle feet

Application: shell / saddle feet glides
 Additional Info: optionally available with welded felt
 Material: polyethylene
 Standard-Colour: black



Order No.	Article	For tube outside Ø	Length L	Width W	Height H	Pin d	Support S	Colour	PU*	MOQ**
091000200001000	W 20	18-20	28,5	20,0	18,0	5,7	4,0	black	1000	-
091000220001000	W 22	20-22	29,0	22,0	20,0	5,7	4,0	black	1000	-
091000250001000	W 25	22-25	43,5	23,5	21,5	5,7	4,0	black	1000	-
091000300001000	W 30	28-30	43,0	28,5	24,5	5,7	4,0	black	500	-
091000320001000	W 32	30-32	43,0	29,5	26,0	5,7	4,0	black	500	-
091000350001000	W 35	32-35	42,5	30,0	26,5	5,7	4,0	black	500	-

Please note that the product illustrations are exemplary images that could deviate from the ordered/delivered products.

All of the dimensions are in mm should nothing to the contrary be stated.

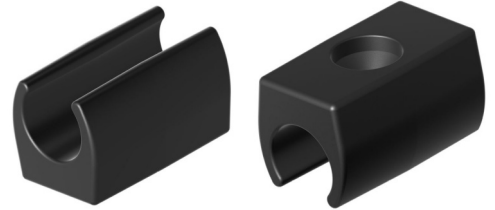
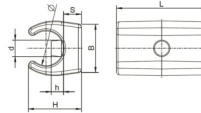
*PU = Packaging Unit, SW = Spanner opening, n.w. = not detachable, o. K. = excl. The head, o. B. = excl. The collar, m. R. = with the radius, MOQ = Minimum Order Quantity.

** MOQ: Parts with MOQ, set-up costs may apply.

We exclusively sell to the trade and industry. Please note our minimum order quantities and the minimum order value per delivery. We would be pleased to send you an offer that is tailored to your needs should you require special colours, deviating dimensions, bioplastics, or larger order quantities.

Clamping (snap on) saddle feet

Application: shell / saddle feet glides
 Additional Info: without pin
 Material: polyethylene
 Standard-Colour: black



Order No.	Article	For tube outside Ø	Length L	Width W	Height H	Support S	Hole Ø d	Colour	PU*	MOQ**
091000120001000	W 12	12,0	30,0	16,0	17,6	6,0	5,5	black	1000	-

Please note that the product illustrations are exemplary images that could deviate from the ordered/delivered products.

All of the dimensions are in mm should nothing to the contrary be stated.

*PU = Packaging Unit, SW = Spanner opening, n.w. = not detachable, o. K. = excl. The head, o. B. = excl. The collar, m. R. = with the radius, MOQ = Minimum Order Quantity.

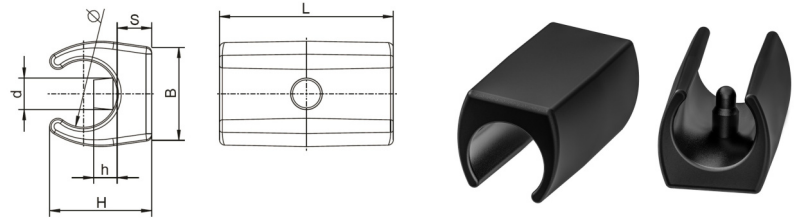
** MOQ: Parts with MOQ, set-up costs may apply.

We exclusively sell to the trade and industry. Please note our minimum order quantities and the minimum order value per delivery. We would be pleased to send you an offer that is tailored to your needs should you require special colours, deviating dimensions, bioplastics, or larger order quantities.

Clamping (snap on) saddle feet

Application: shell / saddle feet glides
 Additional Info: with pin
 Material: polyethylene
 Standard-Colour: black

W-12 1



Order No.	Article	For tube outside \varnothing	Length L	Width W	Height H	Support S	Pin \varnothing d x Height h	Colour	PU*	MOQ**
091100120001000	W 12	12,0	30,0	16,0	17,6	6,0	5,3 x 4	black	1000	-

Please note that the product illustrations are exemplary images that could deviate from the ordered/delivered products.

All of the dimensions are in mm should nothing to the contrary be stated.

*PU = Packaging Unit, SW = Spanner opening, n.w. = not detachable, o. K. = excl. The head, o. B. = excl. The collar, m. R. = with the radius, MOQ = Minimum Order Quantity.

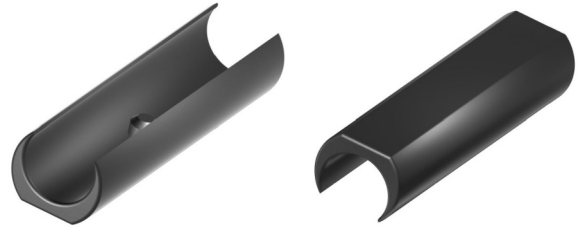
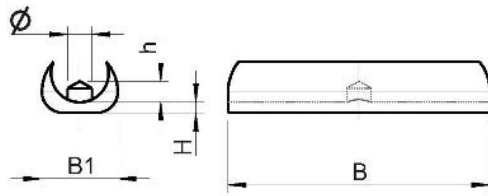
** MOQ: Parts with MOQ, set-up costs may apply.

We exclusively sell to the trade and industry. Please note our minimum order quantities and the minimum order value per delivery. We would be pleased to send you an offer that is tailored to your needs should you require special colours, deviating dimensions, bioplastics, or larger order quantities.

Saddle feet

Application: shell / saddle feet glides
 Additional Info: optionally available with welded felt
 Material: polypropylene
 Standard-Colour: black, uncoloured

WA



Order No.	For tube outside Ø mm	Width W	Width W1	Pin Ø d	Pin height h	Height floor-pin H	Colour	PU*	MOQ**
AGK13500001000	10 - 11	50	13	3,8	2,5	3	black	500	500
AGK13500004000	10 - 11	50	13	3,8	2,5	3	nature	500	500
AGK14500001000	12 - 13	50	13	4,5	2,5	3	black	500	500
AGK14500004000	12 - 13	50	13	4,5	2,5	3	nature	500	500
AGK16500001000	13 - 14	50	13	4,5	2,5	3	black	500	500
AGK16500004000	13 - 14	50	13	4,5	2,5	3	nature	500	500
AGK18500001000	15 - 16	50	13	4,5	2,5	3	black	250	-
AGK18500004000	15 - 16	50	13	4,5	2,5	3	nature	250	-
AGKF13500001000	10 - 11	50	13	3,8	2,5	4	black	500	500
AGKF13500004000	10 - 11	50	13	3,8	2,5	4	nature	500	500
AGKF14500001000	12 - 13	50	13	4,5	2,5	4	black	500	500
AGKF14500004000	12 - 13	50	13	4,5	2,5	4	nature	500	500
AGKF16500001000	13 - 14	50	13	4,5	2,5	4	black	500	500
AGKF16500004000	13 - 14	50	13	4,5	2,5	4	nature	500	500
AGKF18500001000	15 - 16	50	13	4,5	2,5	4	black	500	500
AGKF18500004000	15 - 16	50	13	4,5	2,5	4	nature	500	500

Please note that the product illustrations are exemplary images that could deviate from the ordered/delivered products.

All of the dimensions are in mm should nothing to the contrary be stated.

*PU = Packaging Unit, SW = Spanner opening, n.w. = not detachable, o. K. = excl. The head, o. B. = excl. The collar, m. R. = with the radius, MOQ = Minimum Order Quantity.

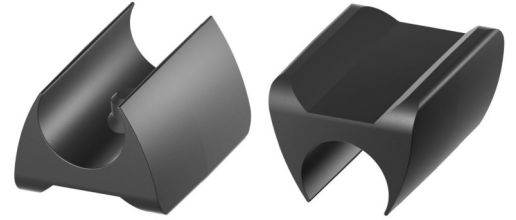
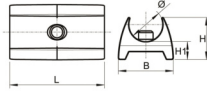
** MOQ: Parts with MOQ, set-up costs may apply.

We exclusively sell to the trade and industry. Please note our minimum order quantities and the minimum order value per delivery. We would be pleased to send you an offer that is tailored to your needs should you require special colours, deviating dimensions, bioplastics, or larger order quantities.

Clamping (snap on) saddle feet

WK

Application: shell / saddle feet glides
Material: polypropylene
Standard-Colour: black



Order No.	For tube outside \varnothing mm	Length L	Width W	Height H	Height H1	Pin \varnothing d	Pin length h mm	Colour	PU*	MOQ**
ASTARP10-11S0001000	10-11	28,0	16,5	12,5	5,0	4,3	3,5	black	250	250
ASTARP12-13S0001000	12-13	28,0	20,0	15,0	6,0	4,9	4,0	black	250	250
ASTARP14-15S0001000	14-15	28,0	23,0	18,0	7,0	4,9	4,2	black	250	250
ASTARP15-16S0001000	15-16	28,0	26,0	20,0	8,0	5,8	4,6	black	250	500

Please note that the product illustrations are exemplary images that could deviate from the ordered/delivered products.

All of the dimensions are in mm should nothing to the contrary be stated.

*PU = Packaging Unit, SW = Spanner opening, n.w. = not detachable, o. K. = excl. The head, o. B. = excl. The collar, m. R. = with the radius, MOQ = Minimum Order Quantity.

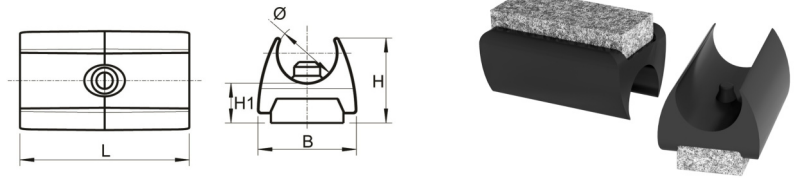
** MOQ: Parts with MOQ, set-up costs may apply.

We exclusively sell to the trade and industry. Please note our minimum order quantities and the minimum order value per delivery. We would be pleased to send you an offer that is tailored to your needs should you require special colours, deviating dimensions, bioplastics, or larger order quantities.

Clamping (snap on) saddle feet with felt slide base

WKF

Application: shell / saddle feet glides
Material: polypropylene
Standard-Colour: black



Order No.	For tube outside \varnothing mm	Length L	Width W	Height H	Height H1	Pin \varnothing d	Pin length h	Colour	PU*	MOQ**
ASTARP10-11SF0001000	10-11	28,0	16,5	12,5	6,0	4,3	3,5	black	250	250
ASTARP12-13SF0001000	12-13	28,0	20,0	15,0	7,0	4,9	4,0	black	250	250
ASTARP14-15SF0001000	14-15	28,0	23,0	18,0	8,0	4,9	4,2	black	250	250
ASTARP15-16SF0001000	15-16	28,0	26,0	20,0	9,0	5,8	4,6	black	250	250

Please note that the product illustrations are exemplary images that could deviate from the ordered/delivered products.

All of the dimensions are in mm should nothing to the contrary be stated.

*PU = Packaging Unit, SW = Spanner opening, n.w. = not detachable, o. K. = excl. The head, o. B. = excl. The collar, m. R. = with the radius, MOQ = Minimum Order Quantity.

** MOQ: Parts with MOQ, set-up costs may apply.

We exclusively sell to the trade and industry. Please note our minimum order quantities and the minimum order value per delivery. We would be pleased to send you an offer that is tailored to your needs should you require special colours, deviating dimensions, bioplastics, or larger order quantities.

Saddle feet for round tubes without pin

Application: shell / saddle feet glides
Material: polyethylene
Standard-Colour: black



Order No.	For tube outside \varnothing	Length L	Width W	Height H	Colour	PU*	MOQ**
090100140001000	14-16	18,0	18,5	3,5	black	5000	5000
090100160001000	16-18	19,0	20,5	3,5	black	4000	4000
090100180001000	18-20	20,0	22,0	3,5	black	2000	-
090100200001000	20-22	22,0	24,5	4,0	black	1000	3000
090100240001000	24-26	25,0	28,0	4,0	black	2000	-
090100280001000	28	30,0	32,0	5,5	black	1000	-

Please note that the product illustrations are exemplary images that could deviate from the ordered/delivered products.

All of the dimensions are in mm should nothing to the contrary be stated.

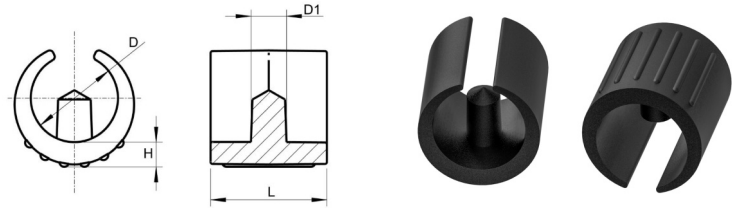
*PU = Packaging Unit, SW = Spanner opening, n.w. = not detachable, o. K. = excl. The head, o. B. = excl. The collar, m. R. = with the radius, MOQ = Minimum Order Quantity.

** MOQ: Parts with MOQ, set-up costs may apply.

We exclusively sell to the trade and industry. Please note our minimum order quantities and the minimum order value per delivery. We would be pleased to send you an offer that is tailored to your needs should you require special colours, deviating dimensions, bioplastics, or larger order quantities.

Saddle feet for round tubes with pin

Application: shell / saddle feet glides
Material: polyethylene
Standard-Colour: black



Order No.	For tube outside \varnothing	Length L	Width W	Pin \varnothing D1	Height H	Colour	PU*	MOQ**
090110140001000	14-16	18,0	18,5	5,5	3,5	black	2000	-
090110160001000	16-18	19,0	20,5	5,5	3,5	black	1000	-
090110180001000	18-20	20,0	22,0	5,5	3,5	black	2000	-
090110200001000	20-22	22,0	24,5	5,5	4,0	black	4000	-
090110240001000	24-26	25,0	28,0	5,5	4,0	black	2000	-
090120240001000	24-26	25,0	28,5	7,5	5,0	black	2000	4000
090120280001000	28	30,0	32,0	7,5	5,5	black	1000	-

Please note that the product illustrations are exemplary images that could deviate from the ordered/delivered products.

All of the dimensions are in mm should nothing to the contrary be stated.

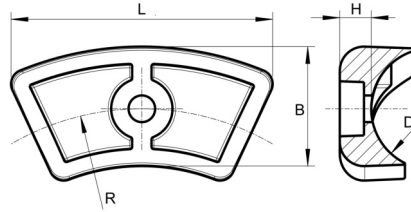
*PU = Packaging Unit, SW = Spanner opening, n.w. = not detachable, o. K. = excl. The head, o. B. = excl. The collar, m. R. = with the radius, MOQ = Minimum Order Quantity.

** MOQ: Parts with MOQ, set-up costs may apply.

We exclusively sell to the trade and industry. Please note our minimum order quantities and the minimum order value per delivery. We would be pleased to send you an offer that is tailored to your needs should you require special colours, deviating dimensions, bioplastics, or larger order quantities.

Saddle feet for curved tubes

Application: shell / saddle feet glides
Material: polypropylene
Standard-Colour: black



Order No.	For tube outside \varnothing	Radius R	Height H	Width W	Hole \varnothing	Countersink \varnothing	Colour	PU*	MOQ**
092110200001000	20,0-22,0	43,5	8,0	22,0	5,5	11,0	black	1000	2000
092110220001000	22,0-23,5	42,8	7,3	23,5	5,5	11,0	black	1000	2000
092110230001000	23,5-25,0	42,0	6,5	25,0	5,5	11,0	black	1000	-

Please note that the product illustrations are exemplary images that could deviate from the ordered/delivered products.

All of the dimensions are in mm should nothing to the contrary be stated.

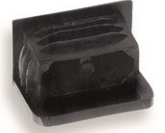
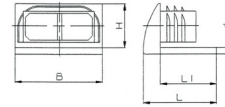
*PU = Packaging Unit, SW = Spanner opening, n.w. = not detachable, o. K. = excl. The head, o. B. = excl. The collar, m. R. = with the radius, MOQ = Minimum Order Quantity.

** MOQ: Parts with MOQ, set-up costs may apply.

We exclusively sell to the trade and industry. Please note our minimum order quantities and the minimum order value per delivery. We would be pleased to send you an offer that is tailored to your needs should you require special colours, deviating dimensions, bioplastics, or larger order quantities.

Angled glides for swivel base tubes

Application: angled glides
Material: polyethylene
Standard-Colour: black



Order No.	Tube dimension	Width W	Height H	Length L	Length L1	Support d	Colour	PU*	MOQ**
081030150001000	30x15x1-2	30,0	18,0	32,0	27,5	3,0	black	1000	1000
081030200001000	30x20x1-2	30,3	23,0	32,0	27,0	3,0	black	1000	-
081040200001000	40x20x1-2	40,5	23,0	33,0	26,0	3,0	black	1000	-
081050200001000	50x20x1-2	51,5	25,0	33,0	27,0	3,0	black	1000	-

Please note that the product illustrations are exemplary images that could deviate from the ordered/delivered products.

All of the dimensions are in mm should nothing to the contrary be stated.

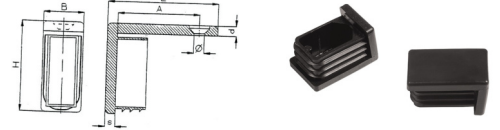
*PU = Packaging Unit, SW = Spanner opening, n.w. = not detachable, o. K. = excl. The head, o. B. = excl. The collar, m. R. = with the radius, MOQ = Minimum Order Quantity.

** MOQ: Parts with MOQ, set-up costs may apply.

We exclusively sell to the trade and industry. Please note our minimum order quantities and the minimum order value per delivery. We would be pleased to send you an offer that is tailored to your needs should you require special colours, deviating dimensions, bioplastics, or larger order quantities.

Angled glides for swivel base tubes

Application: angled glides
Material: polyethylene
Standard-Colour: black



Order No.	Tube dimension	Width x Height WxH	Length L	Spacing S	Tab d	Hole Ø	Plate s	Colour	PU*	MOQ**
080020200001000	20x20x1-2	20,0x25,0	28,5	24,5	5,0	5,2	5,0	black	1000	-
080025250001000	25x25x1-2	25,0x30,0	29,0	15,0	5,0	5,5	5,0	black	1000	-
080030300001000	30x30x1-2	30,0x35,0	39,0	24,5	5,0	5,5	5,0	black	1000	-
080030150001000	30x15x1-2	15,0x37,0	40,0	19,5	7,0	5,0	3,0	black	1000	-
080030200001000	30x20x1-2	20,0x35,0	37,0	25,5	5,0	5,2	5,0	black	1000	-
080030250001000	30x25x1-2	25,0x36,0	44,5	20,0	6,0	5,2	5,5	black	1000	1000
080035200001000	35x20x1-2	20,0x40,0	40,0	25,5	5,0	5,2	5,0	black	1000	1000
080035250001000	35x25x1-2	25,0x40,0	25,0		5,0	ohne	5,0	black	1000	1000
080040200001000	40x20x1-2	20,0x45,0	55,0	40,5	5,0	5,2	5,0	black	1000	-
080040250001000	40x25x1-2	25,0x48,0	45,0	31,0	8,0	5,5	5,0	black	1000	-
080050200001000	50x20x1-2	20,0x55,0	33,5		5,0	ohne	5,0	black	1000	1000
080050250001000	50x25x1-2	25,0x58,0	54,0	40,0	8,0	5,2	5,0	black	500	-
080050300001000	50x30x1-2	30,0x57,0	40,0	25,5	7,0	5,2	5,0	black	500	-

Please note that the product illustrations are exemplary images that could deviate from the ordered/delivered products.

All of the dimensions are in mm should nothing to the contrary be stated.

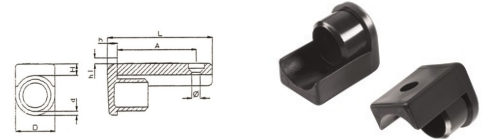
*PU = Packaging Unit, SW = Spanner opening, n.w. = not detachable, o. K. = excl. The head, o. B. = excl. The collar, m. R. = with the radius, MOQ = Minimum Order Quantity.

** MOQ: Parts with MOQ, set-up costs may apply.

We exclusively sell to the trade and industry. Please note our minimum order quantities and the minimum order value per delivery. We would be pleased to send you an offer that is tailored to your needs should you require special colours, deviating dimensions, bioplastics, or larger order quantities.

Angled glides for ends of traverses

Application: angled glides
Material: polyethylene
Standard-Colour: black, uncoloured



Order No.	Tube outside Ø	Length L	Tab H	Head h	Spacing S	Hole Ø	Colour	PU*	MOQ**
096020200001000	20x2	46,0	4,8	7,0		ohne	black	1000	-
096020200004000	20x2	46,0	4,8	7,0		ohne	nature	500	500
096025200001000	25x2	65,5	7,5	5,5	49,0	5,2	black	1000	-
096025200004000	25x2	65,5	7,5	5,5	49,0	5,2	nature	1000	-
096028200001000	28x2	64,5	7,5	6,0	48,5	5,2	black	500	-
096028200004000	28x2	64,5	7,5	6,0	48,5	5,2	nature	500	500
096030200001000	30x2	44,7	6,0	7,0	20,5	5,2	black	500	-
096030200004000	30x2	44,7	6,0	7,0	20,5	5,2	nature	500	500
096032150001000	32x1,5	52,0	8,2	6,0	29,0	5,5	black	500	-
096032150004000	32x1,5	52,0	8,2	6,0	29,0	5,5	nature	500	500
096035150001000	35x1,5	52,0	6,0	7,5	28,0	5,2	black	500	-
096035150004000	35x1,5	52,0	6,0	7,5	28,0	5,2	nature	500	500
096035200001000	35x2	52,0	6,0	7,5	27,5	5,5	black	500	-
096035200004000	35x2	52,0	6,0	7,5	27,5	5,5	nature	500	-
096035250001000	35x2,5	52,0	6,0	7,5	28,0	5,2	black	500	500
096035250004000	35x2,5	52,0	6,0	7,5	28,0	5,2	nature	500	500
096038200001000	38x2	52,0	8,2	6,5	29,5	5,5	black	500	-
096038200004000	38x2	52,0	8,2	6,5	29,5	5,5	nature	500	500
096040250001000	40x2,5	52,0	6,0	6,5	28,0	5,2	black	500	-
096040250004000	40x2,5	52,0	6,0	6,5	28,0	5,2	nature	500	500

Please note that the product illustrations are exemplary images that could deviate from the ordered/delivered products.

All of the dimensions are in mm should nothing to the contrary be stated.

*PU = Packaging Unit, SW = Spanner opening, n.w. = not detachable, o. K. = excl. The head, o. B. = excl. The collar, m. R. = with the radius, MOQ = Minimum Order Quantity.

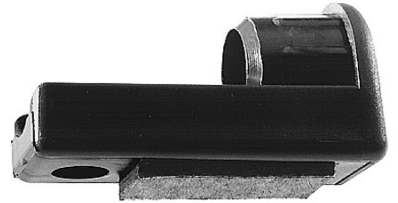
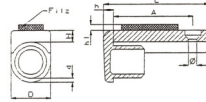
** MOQ: Parts with MOQ, set-up costs may apply.

We exclusively sell to the trade and industry. Please note our minimum order quantities and the minimum order value per delivery. We would be pleased to send you an offer that is tailored to your needs should you require special colours, deviating dimensions, bioplastics, or larger order quantities.

Angled glides for ends of traverses with felt slide base

ZF

Application: angled glides
Material: polyethylene
Standard-Colour: black, uncoloured



Order No.	Tube outside Ø	Length L	Loop H	Head h	Spacing S	Hole Ø	Felt height h1	Colour	PU*	MOQ**
096525200001000	25x2	65,5	7,5	5,5	49,0	5,2	3,5	black	250	-
096525200004000	25x2	65,5	7,5	5,5	49,0	5,2	3,5	nature	500	-
096528200001000	28x2	64,5	7,5	6,0	48,5	5,2	4,0	black	500	1500
096530200001000	30x2	44,7	6,0	7,0	20,5	5,2	4,0	black	100	500
096532150001000	32x1,5	52,0	8,2	6,0	29,0	5,5	4,0	black	500	500
096535150001000	35x1,5	52,0	6,0	7,5	28,0	5,2	4,0	black	500	500
096535200001000	35x2	52,0	6,0	7,5	27,5	5,5	4,0	black	500	-
096535200004000	35x2	52,0	6,0	7,5	27,5	5,5	4,0	nature	500	500

Please note that the product illustrations are exemplary images that could deviate from the ordered/delivered products.

All of the dimensions are in mm should nothing to the contrary be stated.

*PU = Packaging Unit, SW = Spanner opening, n.w. = not detachable, o. K. = excl. The head, o. B. = excl. The collar, m. R. = with the radius, MOQ = Minimum Order Quantity.

** MOQ: Parts with MOQ, set-up costs may apply.

We exclusively sell to the trade and industry. Please note our minimum order quantities and the minimum order value per delivery. We would be pleased to send you an offer that is tailored to your needs should you require special colours, deviating dimensions, bioplastics, or larger order quantities.

Angled glides for end of traverses

Application: angled glides
Material: polyethylene
Standard-Colour: black



Order No.	Tube outside Ø	Length L	Tab H	Spacing S	Hole Ø	Colour	PU*	MOQ**
096800250001000	25x2	65,5	7,5	49,0	5,2	black	1000	2000
096800280001000	28x2	64,5	7,5	48,5	5,2	black	500	-
096800300001000	30x2	44,7	6,0	20,5	5,2	black	1000	2000

Please note that the product illustrations are exemplary images that could deviate from the ordered/delivered products.

All of the dimensions are in mm should nothing to the contrary be stated.

*PU = Packaging Unit, SW = Spanner opening, n.w. = not detachable, o. K. = excl. The head, o. B. = excl. The collar, m. R. = with the radius, MOQ = Minimum Order Quantity.

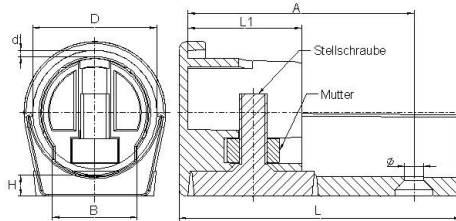
** MOQ: Parts with MOQ, set-up costs may apply.

We exclusively sell to the trade and industry. Please note our minimum order quantities and the minimum order value per delivery. We would be pleased to send you an offer that is tailored to your needs should you require special colours, deviating dimensions, bioplastics, or larger order quantities.

Angled glides, adjustable

Application: angled glides
Material: polyamide
Standard-Colour: black

ZV



Order No.	For tube outside Ø	Length	Height	Width	Hole spacing	Shaft length	Ø	Adjusting screw	Colour	PU*	MOQ**
		L	H	B	A	L1	D1				
096128200001SET	28,0 x 2,0	63,9	5,4	16,6	48,0	25,5	5,3	M 8 x 30	black	250	750
096130200001SET	30,0 x 2,0	69,0	6,0	19,5	53,0	27,5	5,3	M 8 x 30	black	200	-
096135150001SET	35,0 x 1,5	79,7	5,3	23,1	64,6	32,4	5,3	M 8 x 30	black	150	600
096135200001SET	35,0 x 2,0	80,5	6,0	23,1	64,5	32,5	5,3	M 8 x 30	black	250	-
096140250001SET	40,0 x 2,5	92,0	6,0	25,0	76,0	37,5	5,3	M 8 x 30	black	100	600

Please note that the product illustrations are exemplary images that could deviate from the ordered/delivered products.

All of the dimensions are in mm should nothing to the contrary be stated.

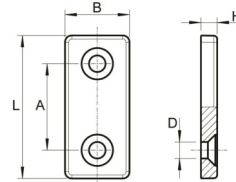
*PU = Packaging Unit, SW = Spanner opening, n.w. = not detachable, o. K. = excl. The head, o. B. = excl. The collar, m. R. = with the radius, MOQ = Minimum Order Quantity.

** MOQ: Parts with MOQ, set-up costs may apply.

We exclusively sell to the trade and industry. Please note our minimum order quantities and the minimum order value per delivery. We would be pleased to send you an offer that is tailored to your needs should you require special colours, deviating dimensions, bioplastics, or larger order quantities.

Bases (glides) with fixing hole

Application: plates / glides for flat irons
 Additional Info: optionally available with welded felt
 Material: polyethylene
 Standard-Colour: black, uncoloured



Order No.	Dimension	Length	Width	Height	Spacing	Hole Ø	Colour	PU*	MOQ**
		L	B	H	A	D			
084040200001000	40x20x5	43,3	19,5	4,9	26,2	5,0	black	1000	-
084040200004000	40x20x5	43,3	19,5	4,9	26,2	5,0	nature	1000	2000
084140200001000	40x20x8	42,5	20,3	8,0	27,5	5,0	black	2500	-
084140200004000	40x20x8	42,5	20,3	8,0	27,5	5,0	nature	2500	2500
084045280001000	45x28x5	44,1	27,5	4,8	26,2	5,0	black	500	2500
084045280004000	45x28x5	44,1	27,5	4,8	26,2	5,0	nature	500	2500
084150250001000	50x25x8	50,6	24,8	8,1	32,0	5,2	black	1000	-
084150250004000	50x25x8	50,6	24,8	8,1	32,0	5,2	nature	1000	2000
084065250001000	65x25x5	65,9	24,9	5,1	36,1	5,3	black	1000	-
084065250004000	65x25x5	65,9	24,9	5,1	36,1	5,3	nature	1000	-

Please note that the product illustrations are exemplary images that could deviate from the ordered/delivered products.

All of the dimensions are in mm should nothing to the contrary be stated.

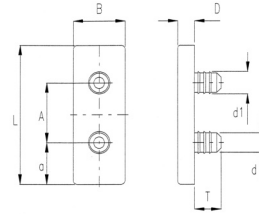
*PU = Packaging Unit, SW = Spanner opening, n.w. = not detachable, o. K. = excl. The head, o. B. = excl. The collar, m. R. = with the radius, MOQ = Minimum Order Quantity.

** MOQ: Parts with MOQ, set-up costs may apply.

We exclusively sell to the trade and industry. Please note our minimum order quantities and the minimum order value per delivery. We would be pleased to send you an offer that is tailored to your needs should you require special colours, deviating dimensions, bioplastics, or larger order quantities.

Bases (glides) with adaptor ends

Application: plates / glides for flat irons
 Additional Info: optionally available with welded felt
 Material: polyethylene
 Standard-Colour: black, uncoloured



Order No.	Dimension	Length	Width	Height	Spacing	Spacing	Pin \varnothing	T	Colour	PU*	MOQ**
		L	B	H	A	A1	d d1				
085025120001001	25x12x5	24,9	11,9	4,9	11,6	6,3	5,8/6,5	9,8	black	1000	-
085025120004000	25x12x5	24,9	11,9	4,9	11,6	6,3	5,8/6,5	9,8	nature	1000	-
085030150001000	30x15x5	29,7	15,1	4,8	12,1	6,7	5,7/6,2	10,1	black	1000	-
085030150004000	30x15x5	29,7	15,1	4,8	12,1	6,7	5,7/6,2	10,1	nature	1000	5000
085040200001000	40x20x5	40,4	20,3	5,9	21,8	9,7	7,2/8,1	10,1	black	1000	-
085040200004000	40x20x5	40,4	20,3	5,9	21,8	9,7	7,2/8,1	10,1	nature	1000	-
085050190001000	50x19x5	49,6	19,0	6,0	21,1	13,9	6,9/7,9	9,8	black	1000	-
085050190004000	50x19x5	49,6	19,0	6,0	21,1	13,9	6,9/7,9	9,8	nature	1000	1000
085050270001000	50x27x5	49,5	27,0	5,9	20,7	14,6	6,9/7,9	9,8	black	1000	-
085050270004000	50x27x5	49,5	27,0	5,9	20,7	14,6	6,9/7,9	9,8	nature	1000	1000

Please note that the product illustrations are exemplary images that could deviate from the ordered/delivered products.

All of the dimensions are in mm should nothing to the contrary be stated.

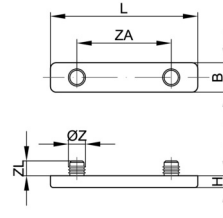
*PU = Packaging Unit, SW = Spanner opening, n.w. = not detachable, o. K. = excl. The head, o. B. = excl. The collar, m. R. = with the radius, MOQ = Minimum Order Quantity.

** MOQ: Parts with MOQ, set-up costs may apply.

We exclusively sell to the trade and industry. Please note our minimum order quantities and the minimum order value per delivery. We would be pleased to send you an offer that is tailored to your needs should you require special colours, deviating dimensions, bioplastics, or larger order quantities.

Long glides for rectangular/square tubes and flat material

Application: plates / glides for flat irons
 Material: polyethylene / polyamide/felt
 Standard-Colour: black, uncoloured



Order No.	Material	Length	Width	Height	Pin spacing	Pin Ø	Pin length	Colour	PU*	MOQ**
		L	B	H	ZA	Z	ZL			
094513500001000	PA	50	6	4	32	5,8	5	black	1000	-
094513500004000	PA	50	6	4	32	5,8	5	nature	5000	5000
094503500001000	PE	50	6	4	32	5,8	5	black	1000	2000
094503500004000	PE	50	6	4	32	5,8	5	nature	1000	2000
094513510001000	PA	50	6	4	32	5,8	10	black	1000	-
094513510004000	PA	50	6	4	32	5,8	10	nature	1000	2000
094503510001000	PE	50	6	4	32	5,8	10	black	2500	2500
094503510004000	PE	50	6	4	32	5,8	10	nature	2500	2500
094511500001000	PA	50	10	4	32	5,8	5	black	1000	-
094511500004000	PA	50	10	4	32	5,8	5	nature	1000	2000
094501500001000	PE	50	10	4	32	5,8	5	black	1000	-
094501500004000	PE	50	10	4	32	5,8	5	nature	1000	2000
094511510001000	PA	50	10	4	32	5,8	10	black	5000	-
094511510004000	PA	50	10	4	32	5,8	10	nature	5000	-
094501510001000	PE	50	10	4	32	5,8	10	black	1000	2000
094501510004000	PE	50	10	4	32	5,8	10	nature	1000	2000
094513800001000	PA	80	6	4	64	5,8	5	black	1000	2000
094513800004000	PA	80	6	4	64	5,8	5	nature	1000	2000
094503800001000	PE	80	6	4	64	5,8	5	black	1000	2000
094503800004000	PE	80	6	4	64	5,8	5	nature	1000	2000
094513810001000	PA	80	6	4	64	5,8	10	black	500	1500
094513810004000	PA	80	6	4	64	5,8	10	nature	500	1500
094503810001000	PE	80	6	4	64	5,8	10	black	1000	2000
094503810004000	PE	80	6	4	64	5,8	10	nature	1000	2000
094512800001000	PA	80	8	4	64	5,8	5	black	1000	-
094512800004000	PA	80	8	4	64	5,8	5	nature	1000	2000
094502800001000	PE	80	8	4	64	5,8	5	black	2500	2500
094502800004000	PE	80	8	4	64	5,8	5	nature	2500	2500
094512810001000	PA	80	8	4	64	5,8	10	black	1000	2000
094512810004000	PA	80	8	4	64	5,8	10	nature	1000	2000
094502810001000	PE	80	8	4	64	5,8	10	black	1000	2000

Please note that the product illustrations are exemplary images that could deviate from the ordered/delivered products.

All of the dimensions are in mm should nothing to the contrary be stated.

*PU = Packaging Unit, SW = Spanner opening, n.w. = not detachable, o. K. = excl. The head, o. B. = excl. The collar, m. R. = with the radius, MOQ = Minimum Order Quantity.

** MOQ: Parts with MOQ, set-up costs may apply.

We exclusively sell to the trade and industry. Please note our minimum order quantities and the minimum order value per delivery. We would be pleased to send you an offer that is tailored to your needs should you require special colours, deviating dimensions, bioplastics, or larger order quantities.

Long glides for rectangular/square tubes and flat material



Application: plates / glides for flat irons
Material: polyethylene / polyamide/felt
Standard-Colour: black, uncoloured



Order No.	Material	Length	Width	Height	Pin spacing	Pin Ø	Pin length	Colour	PU*	MOQ**
		L	B	H	ZA	Z	ZL			
094502810004000	PE	80	8	4	64	5,8	10	nature	1000	2000
094511800001000	PA	80	10	4	64	5,8	5	black	1000	2000
094511800004000	PA	80	10	4	64	5,8	5	nature	1000	2000
094501800001000	PE	80	10	4	64	5,8	5	black	500	1500
094501800004000	PE	80	10	4	64	5,8	5	nature	500	1500
094511810001000	PA	80	10	4	64	5,8	10	black	1000	2000
094511810004000	PA	80	10	4	64	5,8	10	nature	1000	2000
094501810001000	PE	80	10	4	64	5,8	10	black	1000	2000
094501810004000	PE	80	10	4	64	5,8	10	nature	1000	2000
094510800001000	PA	80	14,2	4	64	5,8	5	black	1000	-
094510800004000	PA	80	14,2	4	64	5,8	5	nature	1000	2000
094500800001000	PE	80	14,2	4	64	5,8	5	black	1000	2000
094500800004000	PE	80	14,2	4	64	5,8	5	nature	1000	2000
094510810001000	PA	80	14,2	4	64	5,8	10	black	1000	-
094510810004000	PA	80	14,2	4	64	5,8	10	nature	1000	2000
094500810001000	PE	80	14,2	4	64	5,8	10	black	1000	-
094500810004000	PE	80	14,2	4	64	5,8	10	nature	1000	2000
094500800001/FI	PE	80	14,2	4	64	5,8	5	black	500	-
094500800004/FI	PE	80	14,2	4	64	5,8	5	nature	500	1500
094500810001/FI	PE	80	14,2	8	64	5,8	10	black	500	-
094500810004/FI	PE	80	14,2	8	64	5,8	10	nature	500	1500

Please note that the product illustrations are exemplary images that could deviate from the ordered/delivered products.

All of the dimensions are in mm should nothing to the contrary be stated.

*PU = Packaging Unit, SW = Spanner opening, n.w. = not detachable, o. K. = excl. The head, o. B. = excl. The collar, m. R. = with the radius, MOQ = Minimum Order Quantity.

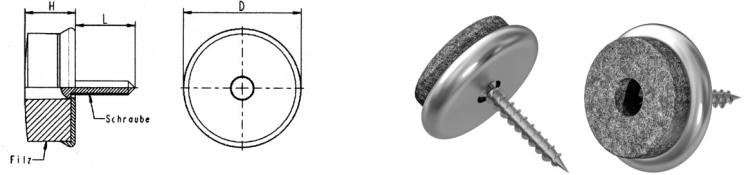
** MOQ: Parts with MOQ, set-up costs may apply.

We exclusively sell to the trade and industry. Please note our minimum order quantities and the minimum order value per delivery. We would be pleased to send you an offer that is tailored to your needs should you require special colours, deviating dimensions, bioplastics, or larger order quantities.

Furniture glides with screw fastening and felt slide base

QFS

Application: furniture glides
Material: stainless steel and felt
Standard-Colour: metal



Order No.	Outside Ø	Approx. height	Approx. thread reach	10000	Colour	PU*	MOQ**
	D	H	L				
D85400180004000	18,4	9,0	15,0		metallic	100	-
D85400200004000	20,3	9,0	15,0		metallic	100	-
D85400220004000	22,4	9,5	15,0		metallic	100	-
D85400240004000	24,4	10,0	15,0		metallic	100	-
D85400280004000	28,4	10,7	15,0		metallic	100	-
D85400300004000	30,2	10,4	15,0		metallic	100	-
D85400350004000	35,2	11,0	18,5		metallic	100	-

Please note that the product illustrations are exemplary images that could deviate from the ordered/delivered products.

All of the dimensions are in mm should nothing to the contrary be stated.

*PU = Packaging Unit, SW = Spanner opening, n.w. = not detachable, o. K. = excl. The head, o. B. = excl. The collar, m. R. = with the radius, MOQ = Minimum Order Quantity.

** MOQ: Parts with MOQ, set-up costs may apply.

We exclusively sell to the trade and industry. Please note our minimum order quantities and the minimum order value per delivery. We would be pleased to send you an offer that is tailored to your needs should you require special colours, deviating dimensions, bioplastics, or larger order quantities.

Furniture glides with nail

QS

Application: furniture glides
Material: polyamide
Standard-Colour: brown, uncoloured



Order No.	Head Ø	Length x Width	Height	Spacing	Approx. pin length	Material	Colour	PU*	MOQ**
	D	L x B	H	A					
D85100150004000	15,0	-	5,0	mittig	15	HDPE	nature	100	-
D85100151059000	15,0	-	5,0	mittig	15	HDPE	brown	100	-
D85100180004000	18,0	-	5,3	mittig	16	HDPE	nature	100	-
D85100181059000	18,0	-	5,3	mittig	16	HDPE	brown	100	-
D85100200004000	20,3	-	5,3	mittig	16	HDPE	nature	100	-
D85100201059000	20,3	-	5,3	mittig	16	HDPE	brown	100	-
D85100220004000	22,0	-	5,3	mittig	16	HDPE	nature	100	-
D85100221059000	22,0	-	5,3	mittig	16	HDPE	brown	100	-
D85100250004000	25,0	-	5,8	mittig	16	PA	nature	100	-
D85100251059000	25,0	-	5,8	mittig	16	PA	brown	100	-
D85100300004000	29,2	-	5,0	mittig	16	PA	nature	100	-
D85100301059000	29,2	-	5,0	mittig	16	PA	brown	100	-
D85135180004000	-	35,0x18,0	5,1	17,3	11	HDPE / PA	nature	100	-
D85135181059000	-	35,0x18,0	5,1	17,3	11	HDPE / PA	brown	100	-
D85144180004000	-	44,0x18,0	5,4	25,5	13	HDPE / PA	nature	100	-
D85144181059000	-	44,0x18,0	5,4	25,5	13	HDPE / PA	brown	100	-
D85144200004000	-	44,5x20,0	5,0	25,5	12	HDPE / PA	nature	100	-
D85144201059000	-	44,5x20,0	5,0	25,5	12	HDPE / PA	brown	100	-

Please note that the product illustrations are exemplary images that could deviate from the ordered/delivered products.

All of the dimensions are in mm should nothing to the contrary be stated.

*PU = Packaging Unit, SW = Spanner opening, n.w. = not detachable, o. K. = excl. The head, o. B. = excl. The collar, m. R. = with the radius, MOQ = Minimum Order Quantity.

** MOQ: Parts with MOQ, set-up costs may apply.

We exclusively sell to the trade and industry. Please note our minimum order quantities and the minimum order value per delivery. We would be pleased to send you an offer that is tailored to your needs should you require special colours, deviating dimensions, bioplastics, or larger order quantities.

Furniture glides with nail and felt slide base

QSF

Application: furniture glides
Material: polyamide
Standard-Colour: brown, uncoloured



Order No.	Head Ø	LengthxWidth	Height	Spacing	Approx. pin length	Colour	PU*	MOQ**
	D	L x B	H x h1	A				
D85200160004000	16,4	-	9,5	-	15,5	nature	100	-
D85200161059000	16,4	-	9,5	-	15,5	brown	100	-
D85200200004000	20,7	-	9,5	-	16,5	nature	100	-
D85200201059000	20,7	-	9,5	-	16,5	brown	100	-
D85200240004000	24,0	-	9,5	-	16,5	nature	100	-
D85200241059000	24,0	-	9,5	-	16,5	brown	100	-
D85200280004000	27,5	-	9,5	-	16,5	nature	100	-
D85200281059000	27,5	-	9,5	-	16,5	brown	100	-
D85200320004000	32,3	-	9,5	-	15,0	nature	100	-
D85200321059000	32,3	-	9,5	-	15,0	brown	100	-
D85231180002000	-	31,1x18,3	12,3	17,5	12,0	grey	100	100
D85231180004000	-	31,1x18,3	12,3	17,5	12,0	nature	100	-
D85231181059000	-	31,1x18,3	12,3	17,5	12,0	brown	100	-
D85238180002000	-	37,8x18,2	12,3	25,6	12,5	grey	100	100
D85240250002000	-	39,6x25,3	12,3	25,3	12,5	grey	100	100

Please note that the product illustrations are exemplary images that could deviate from the ordered/delivered products.

All of the dimensions are in mm should nothing to the contrary be stated.

*PU = Packaging Unit, SW = Spanner opening, n.w. = not detachable, o. K. = excl. The head, o. B. = excl. The collar, m. R. = with the radius, MOQ = Minimum Order Quantity.

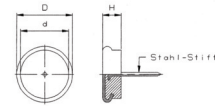
** MOQ: Parts with MOQ, set-up costs may apply.

We exclusively sell to the trade and industry. Please note our minimum order quantities and the minimum order value per delivery. We would be pleased to send you an offer that is tailored to your needs should you require special colours, deviating dimensions, bioplastics, or larger order quantities.

Furniture glides with nail and stainless steel slide base

QSM

Application: furniture glides
Material: polyvinyl chloride / steel / stainless steel
Standard-Colour: black



Order No.	Metal cap Ø	Plastic Ø	Height	Approx. pin length	Colour	PU*	MOQ**
	D	d	H				
D85300180001000	18,3	15,0	10,0	15,0	black	100	400
D85300200001000	20,1	17,0	10,0	15,0	black	100	400
D85300230001000	23,0	20,0	10,0	15,0	black	100	400
D85300270001000	27,0	23,0	11,3	15,0	black	100	400
D85300300001000	30,3	27,0	10,0	15,0	black	100	400
D85300400001000	39,5	33,5	11,0	27,0	black	100	100

Please note that the product illustrations are exemplary images that could deviate from the ordered/delivered products.

All of the dimensions are in mm should nothing to the contrary be stated.

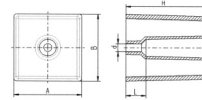
*PU = Packaging Unit, SW = Spanner opening, n.w. = not detachable, o. K. = excl. The head, o. B. = excl. The collar, m. R. = with the radius, MOQ = Minimum Order Quantity.

** MOQ: Parts with MOQ, set-up costs may apply.

We exclusively sell to the trade and industry. Please note our minimum order quantities and the minimum order value per delivery. We would be pleased to send you an offer that is tailored to your needs should you require special colours, deviating dimensions, bioplastics, or larger order quantities.

Square upholstery glides

Application: furniture glides / device feet
Material: acrylonitrile butadiene styrene
Standard-Colour: black



Order No.	Dimension	Height	Length	Hole \emptyset	Colour	PU*	MOQ**
	A x B	H	L	d			
888150010001000	50,0x50,0	61,9	15,0	6,2	black	300	900
888150020001000	50,0x50,0	30,0	6,2	black	500	1000	

Please note that the product illustrations are exemplary images that could deviate from the ordered/delivered products.

All of the dimensions are in mm should nothing to the contrary be stated.

*PU = Packaging Unit, SW = Spanner opening, n.w. = not detachable, o. K. = excl. The head, o. B. = excl. The collar, m. R. = with the radius, MOQ = Minimum Order Quantity.

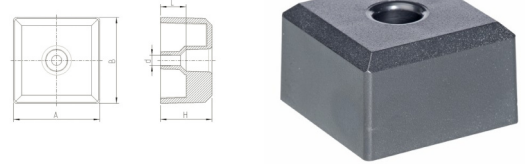
** MOQ: Parts with MOQ, set-up costs may apply.

We exclusively sell to the trade and industry. Please note our minimum order quantities and the minimum order value per delivery. We would be pleased to send you an offer that is tailored to your needs should you require special colours, deviating dimensions, bioplastics, or larger order quantities.

Chamfered upholstery glides

Application: furniture glides
Material: acrylonitrile butadiene styrene
Standard-Colour: black

PFE 1



Order No.	Dimension	Height	Length	Hole \varnothing	Colour	PU*	MOQ**
	A x B	H	L	d			
888150030001000	50,0x50,0	30,0	15,0	6,2	black	500	1000

Please note that the product illustrations are exemplary images that could deviate from the ordered/delivered products.

All of the dimensions are in mm should nothing to the contrary be stated.

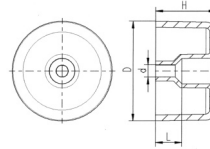
*PU = Packaging Unit, SW = Spanner opening, n.w. = not detachable, o. K. = excl. The head, o. B. = excl. The collar, m. R. = with the radius, MOQ = Minimum Order Quantity.

** MOQ: Parts with MOQ, set-up costs may apply.

We exclusively sell to the trade and industry. Please note our minimum order quantities and the minimum order value per delivery.
We would be pleased to send you an offer that is tailored to your needs should you require special colours, deviating dimensions, bioplastics, or larger order quantities.

Round upholstery glides

Application: furniture glides / device feet
Material: polypropylene
Standard-Colour: black



Order No.	Outside \varnothing	Height	Hole	Length	Colour	PU*	MOQ**
	D	H	d	L			
888130020001000	49,8	29,6	6,0	13,0	black	500	-

Please note that the product illustrations are exemplary images that could deviate from the ordered/delivered products.

All of the dimensions are in mm should nothing to the contrary be stated.

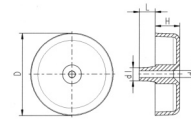
*PU = Packaging Unit, SW = Spanner opening, n.w. = not detachable, o. K. = excl. The head, o. B. = excl. The collar, m. R. = with the radius, MOQ = Minimum Order Quantity.

** MOQ: Parts with MOQ, set-up costs may apply.

We exclusively sell to the trade and industry. Please note our minimum order quantities and the minimum order value per delivery. We would be pleased to send you an offer that is tailored to your needs should you require special colours, deviating dimensions, bioplastics, or larger order quantities.

Round upholstery glides

Application: furniture glides / device feet
Material: polyethylene
Standard-Colour: black



Order No.	Outside \varnothing	Height	Shaft \varnothing	Shaft length	Hole \varnothing	Colour	PU*	MOQ**
	D	H	d1	L	d			
888130010001000	50,0	15,0	8,0	10	4,2	black	1000	2000

Please note that the product illustrations are exemplary images that could deviate from the ordered/delivered products.

All of the dimensions are in mm should nothing to the contrary be stated.

*PU = Packaging Unit, SW = Spanner opening, n.w. = not detachable, o. K. = excl. The head, o. B. = excl. The collar, m. R. = with the radius, MOQ = Minimum Order Quantity.

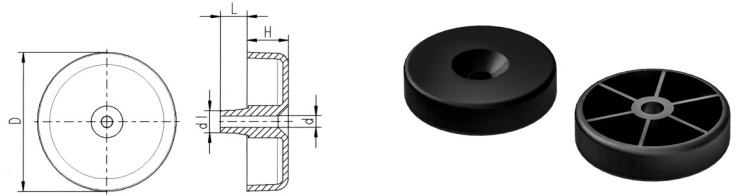
** MOQ: Parts with MOQ, set-up costs may apply.

We exclusively sell to the trade and industry. Please note our minimum order quantities and the minimum order value per delivery. We would be pleased to send you an offer that is tailored to your needs should you require special colours, deviating dimensions, bioplastics, or larger order quantities.

Slide washers with drill hole for countersunk screws



Application: furniture glides / device feet
Material: polyamide
Standard-Colour: black



Order No.	Outside \varnothing	Height	Hole	Colour	PU*	MOQ**
	D	H	d			
088301050001001	30,0	10,0	6,2	black	500	-
088401060001000	40,0	10,0	6,2	black	1000	-

Please note that the product illustrations are exemplary images that could deviate from the ordered/delivered products.

All of the dimensions are in mm should nothing to the contrary be stated.

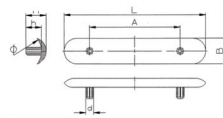
*PU = Packaging Unit, SW = Spanner opening, n.w. = not detachable, o. K. = excl. The head, o. B. = excl. The collar, m. R. = with the radius, MOQ = Minimum Order Quantity.

** MOQ: Parts with MOQ, set-up costs may apply.

We exclusively sell to the trade and industry. Please note our minimum order quantities and the minimum order value per delivery. We would be pleased to send you an offer that is tailored to your needs should you require special colours, deviating dimensions, bioplastics, or larger order quantities.

Stacking protection elements for round tubes

Application: stacking protection
 Additional Info: Attention! The items are delivered slightly bent.
 Material: polyethylene
 Standard-Colour: black



Order No.	Tube outside \varnothing	Length x Width L x B	Spacing A	Pin \varnothing d	Height h	Height H	Colour	PU*	MOQ**
094200180001000	18-22	100x11,8	64,0	5,3	10,3	13,8	black	1000	-
094200220001000	22-25	100x14,5	64,0	5,3	11,0	14,0	black	1000	-
094200280001000	28-30	100x17,2	64,0	5,3	11,0	14,5	black	1000	2000

Please note that the product illustrations are exemplary images that could deviate from the ordered/delivered products.

All of the dimensions are in mm should nothing to the contrary be stated.

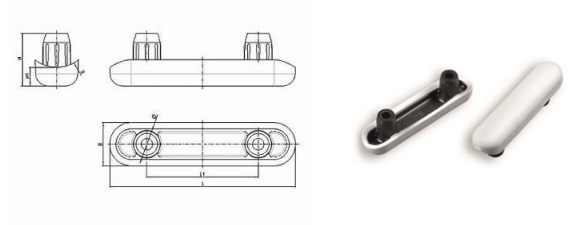
*PU = Packaging Unit, SW = Spanner opening, n.w. = not detachable, o. K. = excl. The head, o. B. = excl. The collar, m. R. = with the radius, MOQ = Minimum Order Quantity.

** MOQ: Parts with MOQ, set-up costs may apply.

We exclusively sell to the trade and industry. Please note our minimum order quantities and the minimum order value per delivery. We would be pleased to send you an offer that is tailored to your needs should you require special colours, deviating dimensions, bioplastics, or larger order quantities.

Stack protection elements for round tubes

Application: stacking protection
Material: polypropylene / ethylene-propylene-rubber
Standard-Colour: grey



Order No.	Tube outside Ø	Length	Spacing	Width	Height	Height	Pin Ø	Colour	PU*	MOQ**
		L	L1	B	h	H1				
099910102612000	20-25	60,0	36,0	14,0	17,0	6,0	9,0	grey	1000	-

Please note that the product illustrations are exemplary images that could deviate from the ordered/delivered products.

All of the dimensions are in mm should nothing to the contrary be stated.

*PU = Packaging Unit, SW = Spanner opening, n.w. = not detachable, o. K. = excl. The head, o. B. = excl. The collar, m. R. = with the radius, MOQ = Minimum Order Quantity.

** MOQ: Parts with MOQ, set-up costs may apply.

We exclusively sell to the trade and industry. Please note our minimum order quantities and the minimum order value per delivery. We would be pleased to send you an offer that is tailored to your needs should you require special colours, deviating dimensions, bioplastics, or larger order quantities.

Fastening rivets

V

Application: accessories
 Additional Info: for angled glides and plates
 Material: polyamide
 Standard-Colour: black



Order No.	Instructions for use	Colour	PU*	MOQ**
090000550001000	Stift Ø 3,5 mm - zum Spreizen einschlagen	black	20000	20000

Please note that the product illustrations are exemplary images that could deviate from the ordered/delivered products.

All of the dimensions are in mm should nothing to the contrary be stated.

*PU = Packaging Unit, SW = Spanner opening, n.w. = not detachable, o. K. = excl. The head, o. B. = excl. The collar, m. R. = with the radius, MOQ = Minimum Order Quantity.

** MOQ: Parts with MOQ, set-up costs may apply.

We exclusively sell to the trade and industry. Please note our minimum order quantities and the minimum order value per delivery. We would be pleased to send you an offer that is tailored to your needs should you require special colours, deviating dimensions, bioplastics, or larger order quantities.